



Red Flag Alert statistics for the UK Regions

for

Fourth Quarter (Oct-Dec) 2015

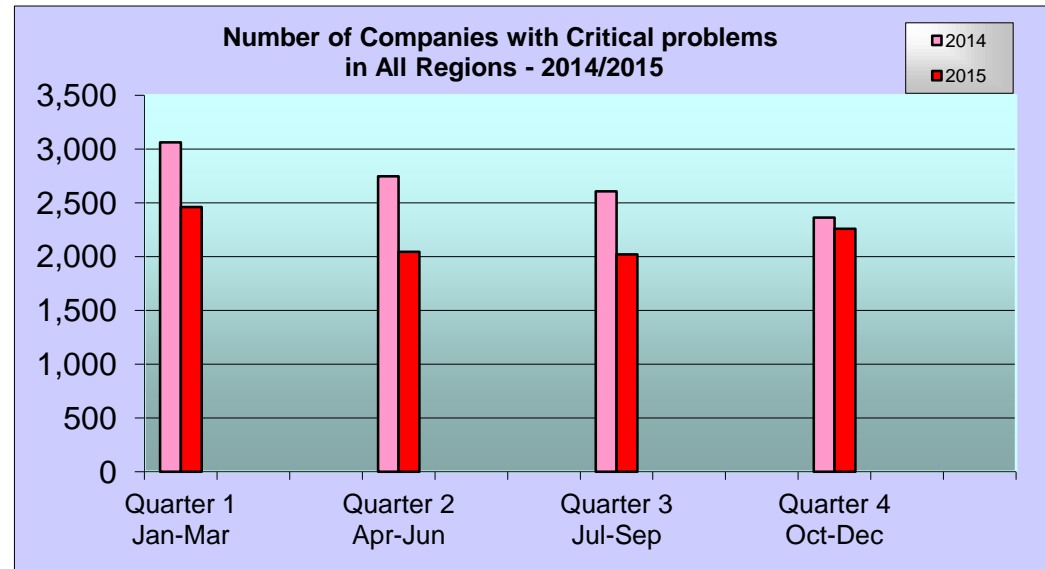


**Note:** The same company may have received more than one action during the period.

Code	Description
Critical problems	These are companies with CCJs totalling £5,000 or more and/or Winding-Up Petition or in a Voluntary Arrangement.

All Regions - Critical Problems 2014	
Quarter	No. of Companies
Quarter 1 Jan-Mar	3,063
Quarter 2 Apr-Jun	2,745
Quarter 3 Jul-Sep	2,608
Quarter 4 Oct-Dec	2,362

All Regions - Critical Problems 2015	
Quarter	No. of Companies
Quarter 1 Jan-Mar	2,461
Quarter 2 Apr-Jun	2,045
Quarter 3 Jul-Sep	2,020
Quarter 4 Oct-Dec	2,257



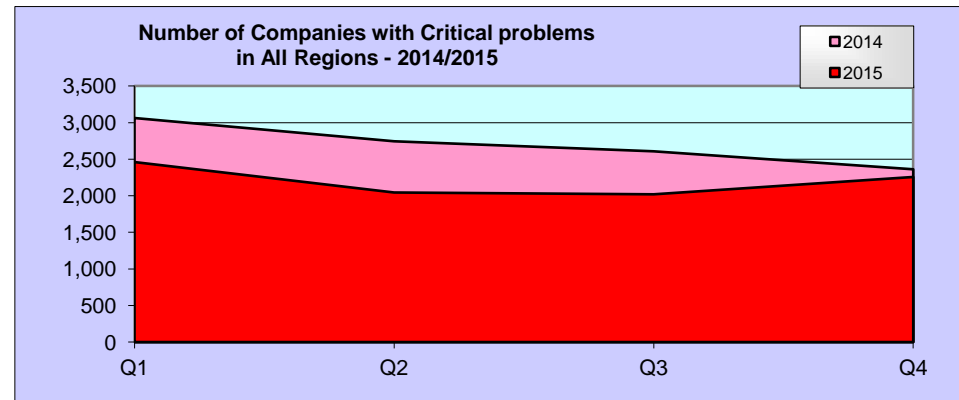
The information contained in this page is for your sole use and may not be passed on to any third party by you without the prior consent of Red Flag Alert LLP who assume no responsibility for the accuracy and correctness of such information and any opinions contained therein or for any consequences of you relying on it for any particular purposes.

**Note:** The same company may have received more than one action during the period.

Code	Description
Critical problems	These are companies with CCJs totalling £5,000 or more and/or Winding-Up Petition or in a Voluntary Arrangement.

**All Regions - Companies with Critical problems 2014/2015**

	Q1	Q2	Q3	Q4	Monthly Average	+/- %
2014	3,063	2,745	2,608	2,362	898	
2015	2,461	2,045	2,020	2,257	732	-18.5%



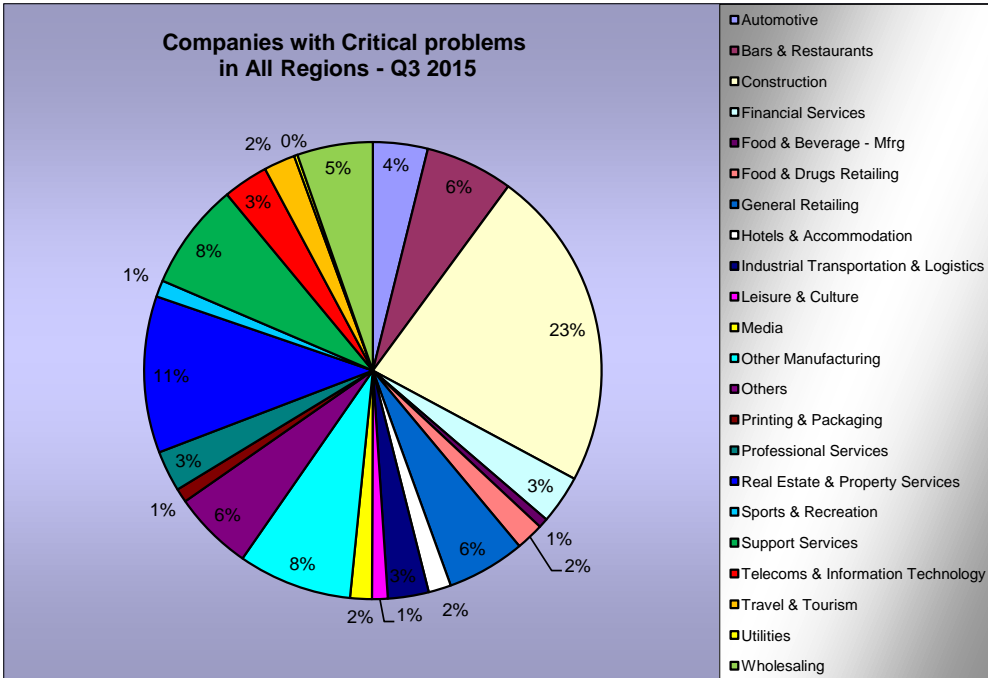
The information contained in this page is for your sole use and may not be passed on to any third party by you without the prior consent of Red Flag Alert LLP who assume no responsibility for the accuracy and correctness of such information and any opinions contained therein or for any consequences of you relying on it for any particular purposes.



**Note:** Industry Sectors - Companies are categorised by SIC classification per their details filed with Companies House.

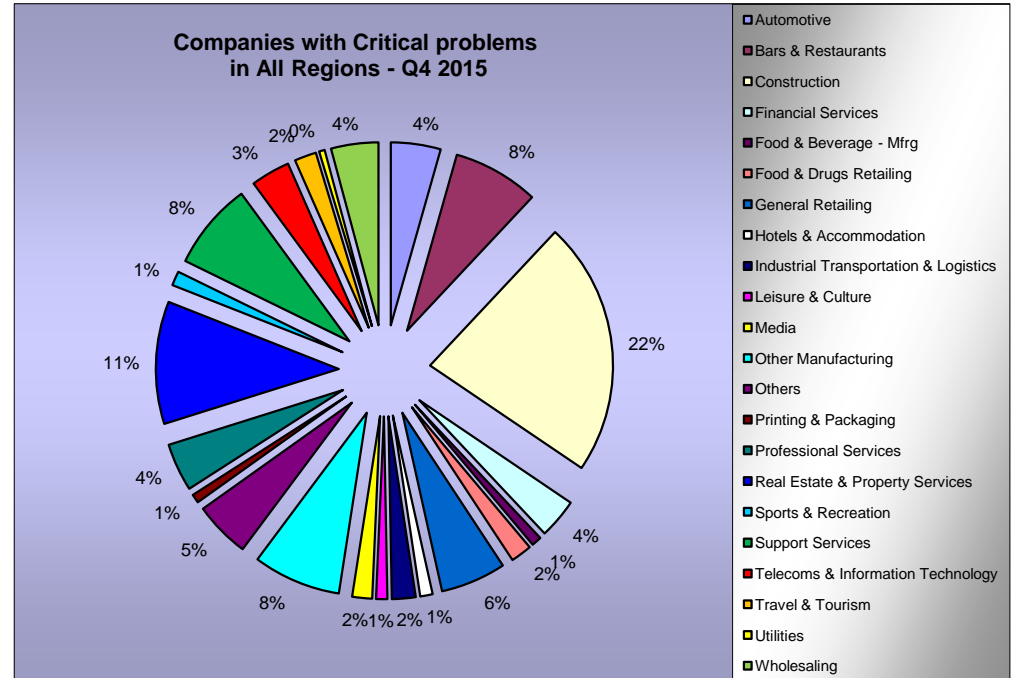
**All Regions**

**by Industry Sector - Companies with Critical problems - 3rd Quarter 2015**



**All Regions**

**by Industry Sector - Companies with Critical problems - 4th Quarter 2015**



The information contained in this page is for your sole use and may not be passed on to any third party by you without the prior consent of Red Flag Alert LLP who assume no responsibility for the accuracy and correctness of such information and any opinions contained therein or for any consequences of you relying on it for any particular purposes.

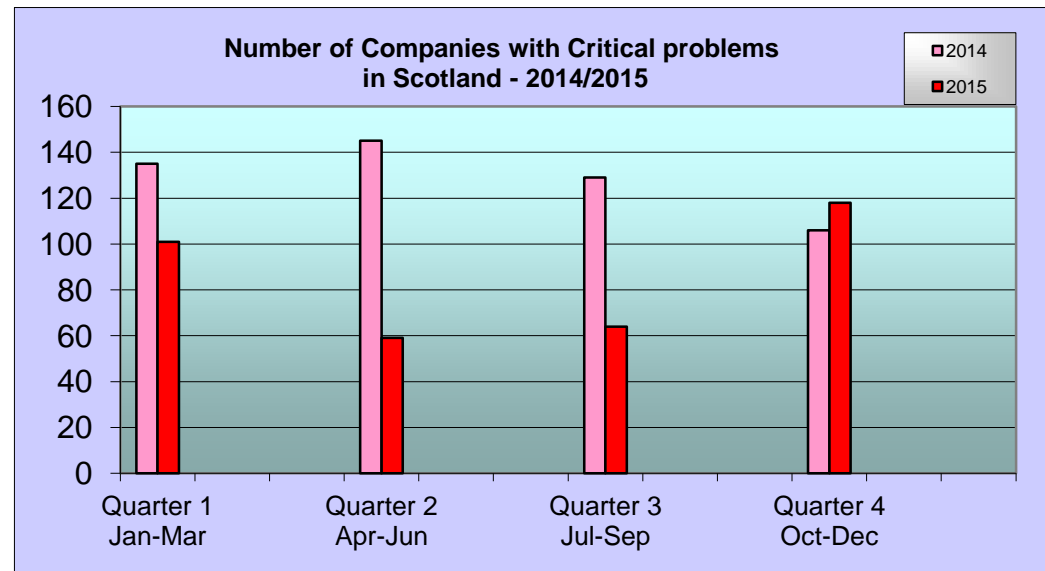


**Note:** The same company may have received more than one action during the period.

Code	Description
Critical problems	These are companies with CCJs totalling £5,000 or more and/or Winding-Up Petition or in a Voluntary Arrangement.

Scotland - Critical Problems 2014	
Quarter	No. of Companies
Quarter 1 Jan-Mar	135
Quarter 2 Apr-Jun	145
Quarter 3 Jul-Sep	129
Quarter 4 Oct-Dec	106

Scotland - Critical Problems 2015	
Quarter	No. of Companies
Quarter 1 Jan-Mar	101
Quarter 2 Apr-Jun	59
Quarter 3 Jul-Sep	64
Quarter 4 Oct-Dec	118



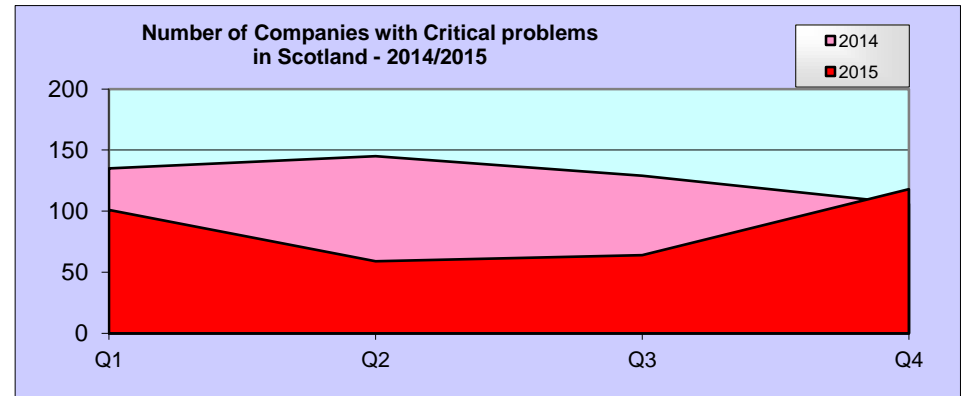
The information contained in this page is for your sole use and may not be passed on to any third party by you without the prior consent of Red Flag Alert LLP who assume no responsibility for the accuracy and correctness of such information and any opinions contained therein or for any consequences of you relying on it for any particular purposes.

**Note:** The same company may have received more than one action during the period.

Code	Description
Critical problems	These are companies with CCJs totalling £5,000 or more and/or Winding-Up Petition or in a Voluntary Arrangement.

**Scotland - Companies with Critical problems 2014/2015**

	Q1	Q2	Q3	Q4	Monthly Average	+/- %
2014	135	145	129	106	43	
2015	101	59	64	118	29	-33.6%

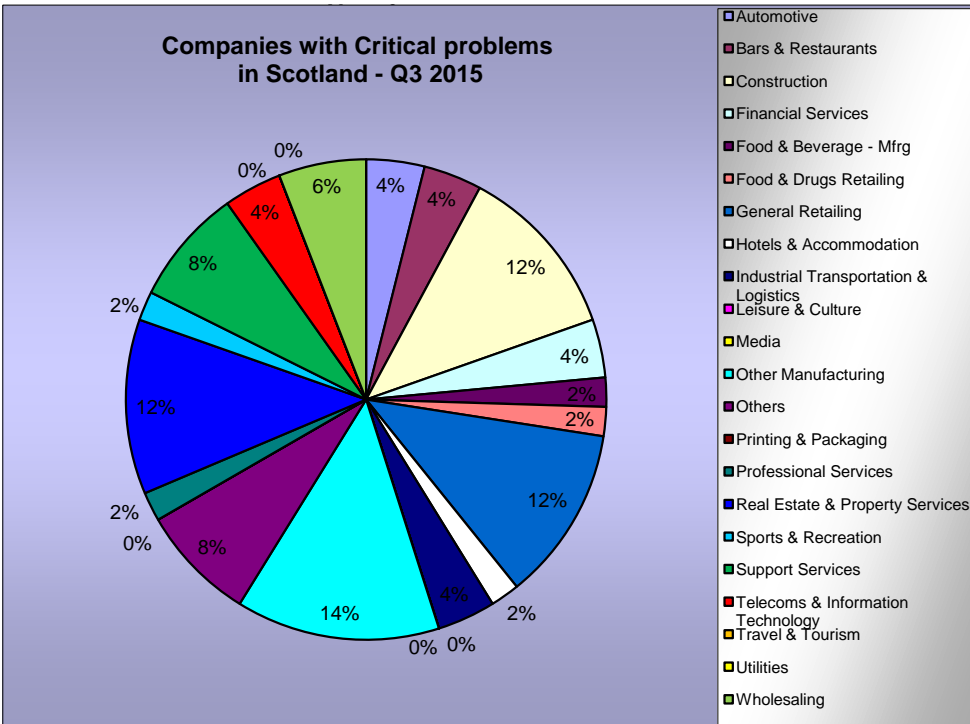


The information contained in this page is for your sole use and may not be passed on to any third party by you without the prior consent of Red Flag Alert LLP who assume no responsibility for the accuracy and correctness of such information and any opinions contained therein or for any consequences of you relying on it for any particular purposes.

**Note:** Industry Sectors - Companies are categorised by SIC classification per their details filed with Companies House.

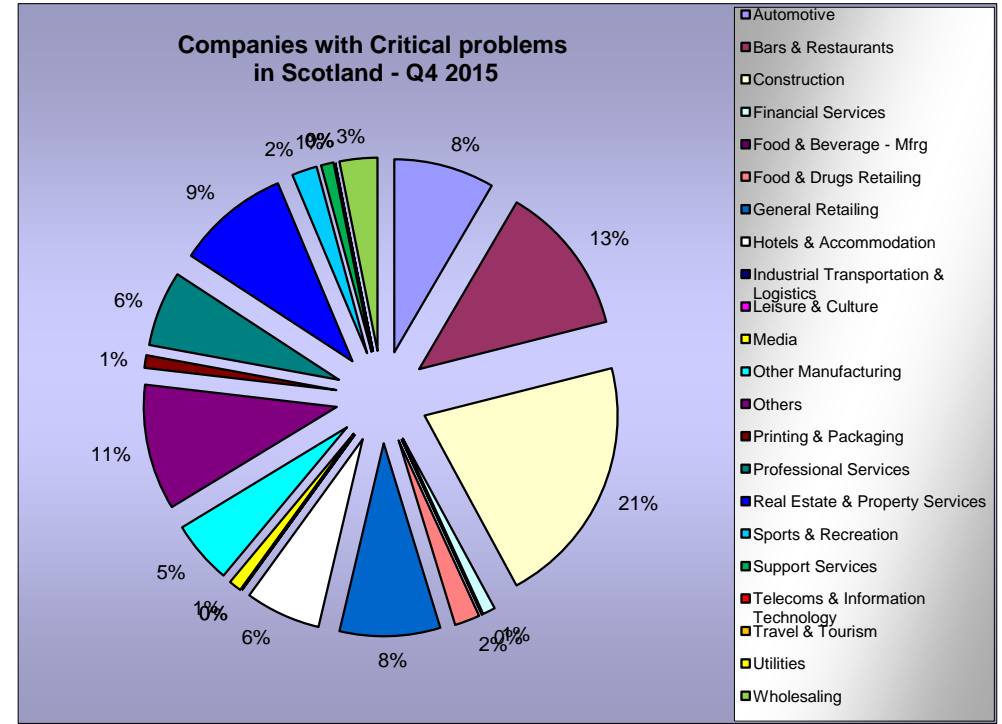
**Scotland**

**by Industry Sector - Companies with Critical problems - 3rd Quarter 2015**



**Scotland**

**- by Industry Sector - Companies with Critical problems - 4th Quarter 2015**



The information contained in this page is for your sole use and may not be passed on to any third party by you without the prior consent of Red Flag Alert LLP who assume no responsibility for the accuracy and correctness of such information and any opinions contained therein or for any consequences of you relying on it for any particular purposes.

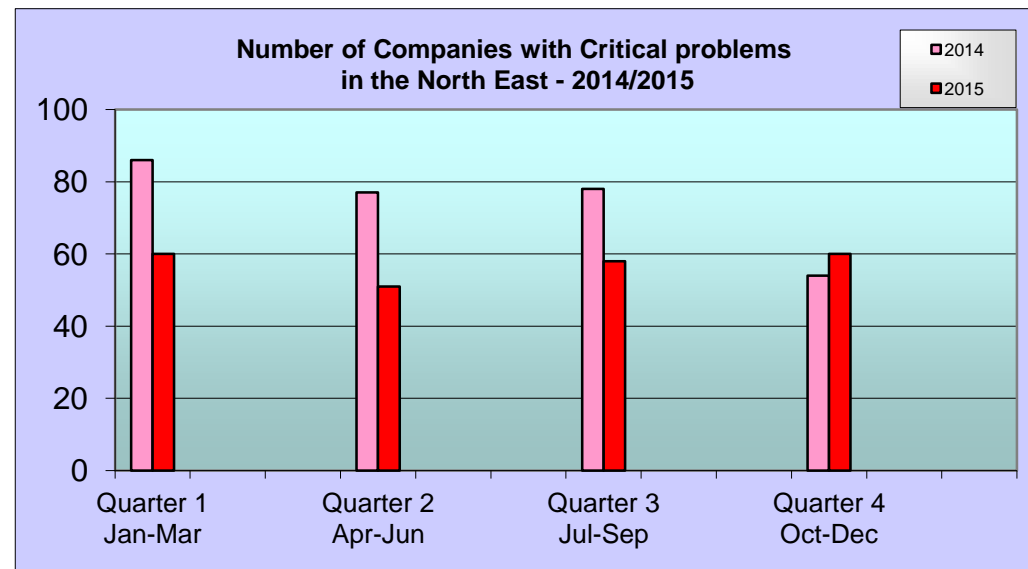


**Note:** The same company may have received more than one action during the period.

Code	Description
Critical problems	These are companies with CCJs totalling £5,000 or more and/or Winding-Up Petition or in a Voluntary Arrangement.

North East - Critical Problems 2014	
Quarter	No. of Companies
Quarter 1 Jan-Mar	86
Quarter 2 Apr-Jun	77
Quarter 3 Jul-Sep	78
Quarter 4 Oct-Dec	54

North East - Critical Problems 2015	
Quarter	No. of Companies
Quarter 1 Jan-Mar	60
Quarter 2 Apr-Jun	51
Quarter 3 Jul-Sep	58
Quarter 4 Oct-Dec	60



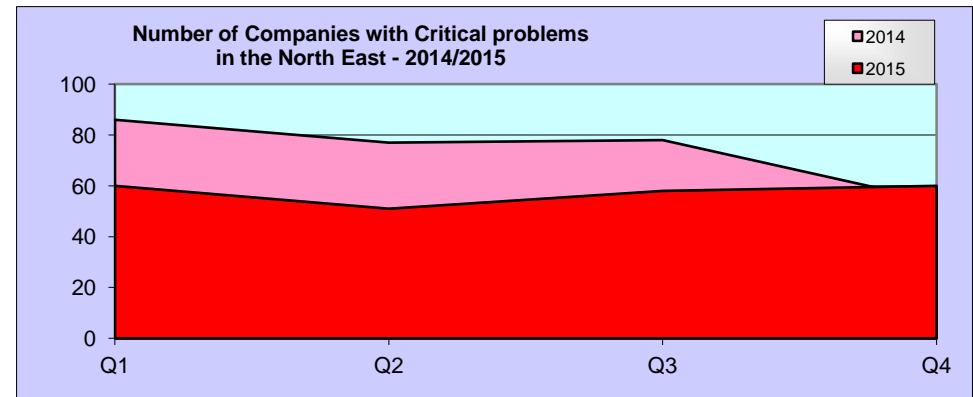
The information contained in this page is for your sole use and may not be passed on to any third party by you without the prior consent of Red Flag Alert LLP who assume no responsibility for the accuracy and correctness of such information and any opinions contained therein or for any consequences of you relying on it for any particular purposes.

**Note:** The same company may have received more than one action during the period.

Code	Description
Critical problems	These are companies with CCJs totalling £5,000 or more and/or Winding-Up Petition or in a Voluntary Arrangement.

**North East - Companies with Critical problems 2014/2015**

	Q1	Q2	Q3	Q4	Monthly Average	+/- %
2014	86	77	78	54	25	
2015	60	51	58	60	19	-22.4%

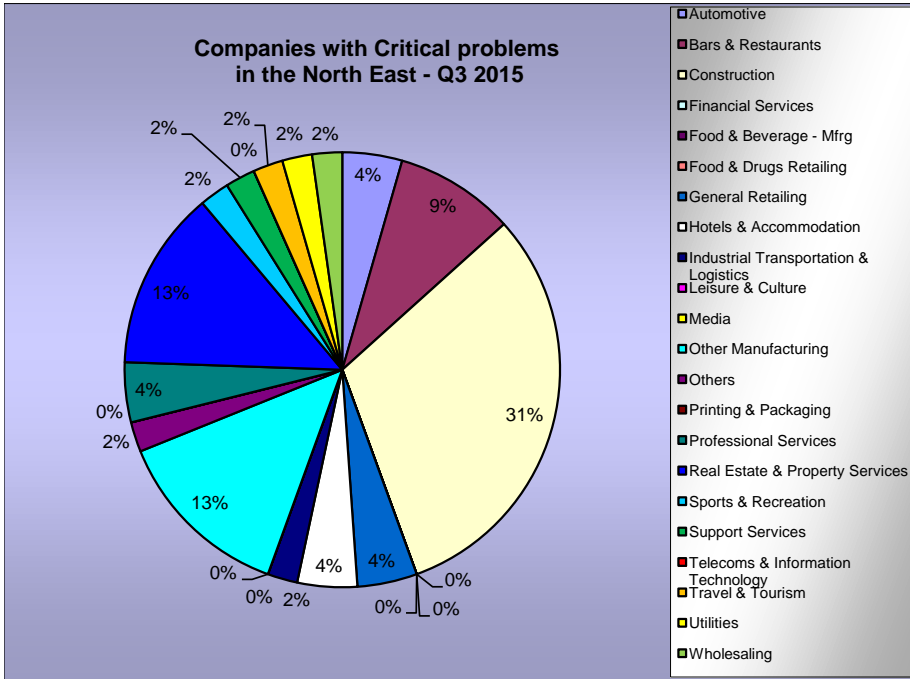


The information contained in this page is for your sole use and may not be passed on to any third party by you without the prior consent of Red Flag Alert LLP who assume no responsibility for the accuracy and correctness of such information and any opinions contained therein or for any consequences of you relying on it for any particular purposes.

**Note:** Industry Sectors - Companies are categorised by SIC classification per their details filed with Companies House.

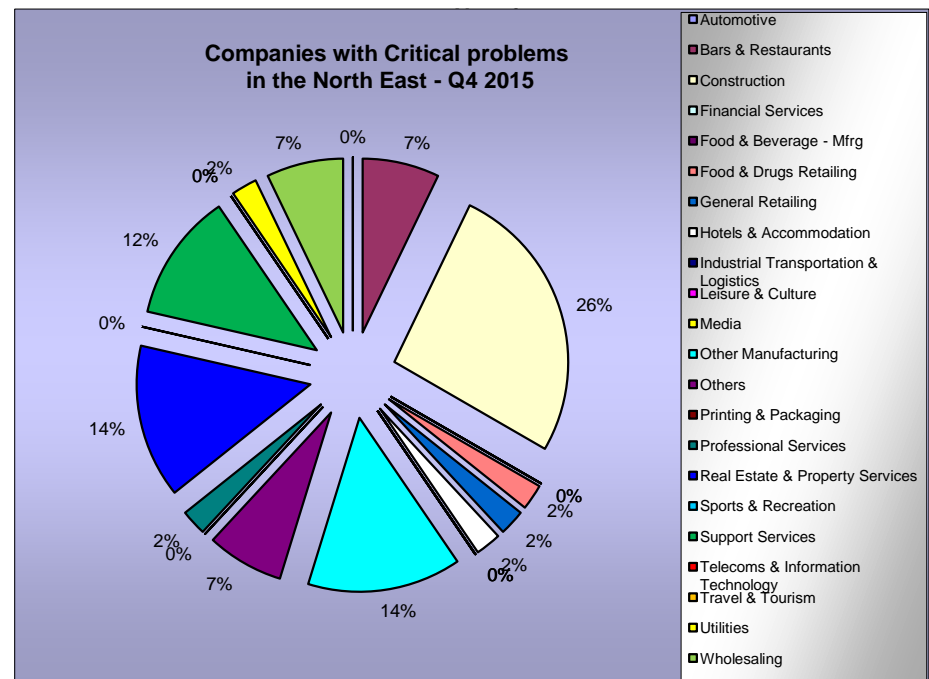
**North East**

**by Industry Sector - Companies with Critical problems - 3rd Quarter 2015**



**North East**

**- by Industry Sector - Companies with Critical problems - 4th Quarter 2015**



The information contained in this page is for your sole use and may not be passed on to any third party by you without the prior consent of Red Flag Alert LLP who assume no responsibility for the accuracy and correctness of such information and any opinions contained therein or for any consequences of you relying on it for any particular purposes.

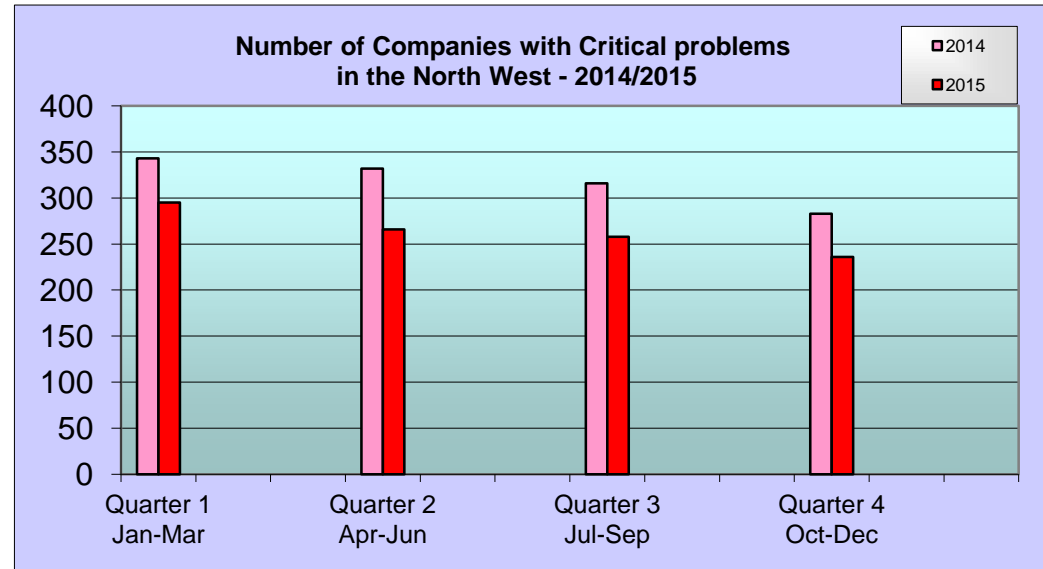


**Note:** The same company may have received more than one action during the period.

Code	Description
Critical problems	These are companies with CCJs totalling £5,000 or more and/or Winding-Up Petition or in a Voluntary Arrangement.

North West - Critical Problems 2014	
Quarter	No. of Companies
Quarter 1 Jan-Mar	343
Quarter 2 Apr-Jun	332
Quarter 3 Jul-Sep	316
Quarter 4 Oct-Dec	283

North West - Critical Problems 2015	
Quarter	No. of Companies
Quarter 1 Jan-Mar	295
Quarter 2 Apr-Jun	266
Quarter 3 Jul-Sep	258
Quarter 4 Oct-Dec	236



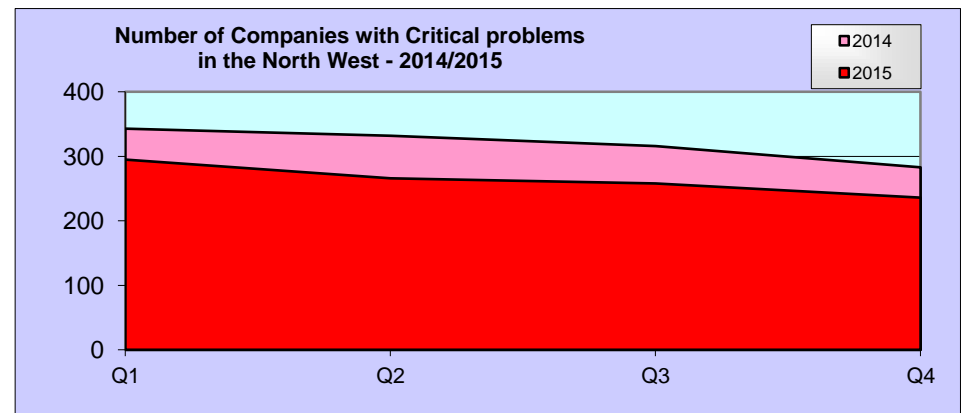
The information contained in this page is for your sole use and may not be passed on to any third party by you without the prior consent of Red Flag Alert LLP who assume no responsibility for the accuracy and correctness of such information and any opinions contained therein or for any consequences of you relying on it for any particular purposes.

**Note:** The same company may have received more than one action during the period.

Code	Description
Critical problems	These are companies with CCJs totalling £5,000 or more and/or Winding-Up Petition or in a Voluntary Arrangement.

### North West - Companies with Critical problems 2014/2015

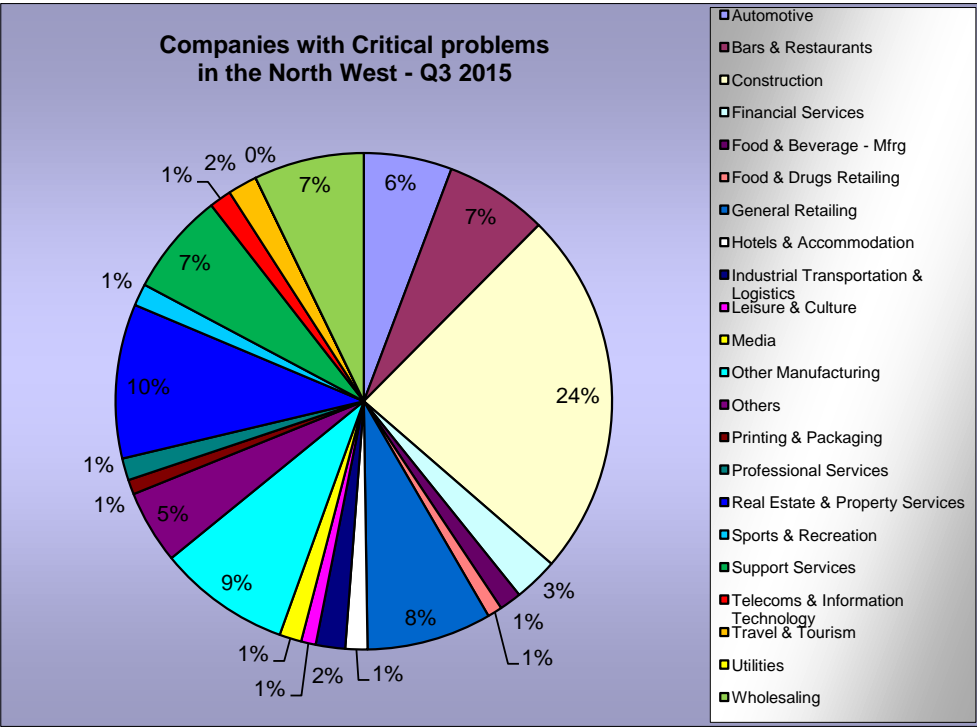
	Q1	Q2	Q3	Q4	Monthly Average	+/- %
2014	343	332	316	283	106	
2015	295	266	258	236	88	-17.2%



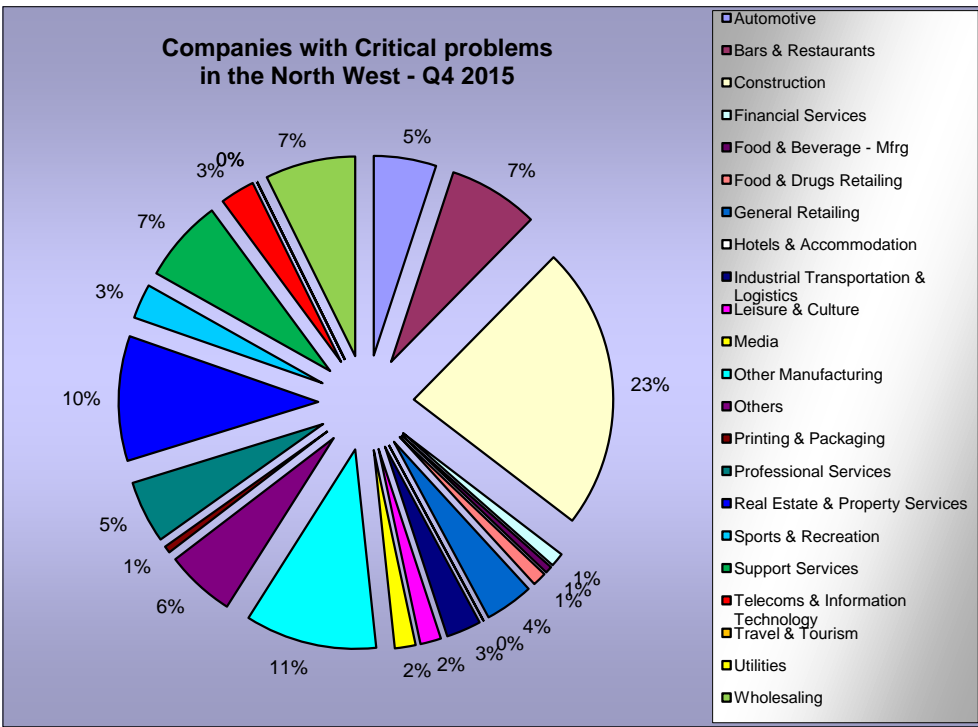
The information contained in this page is for your sole use and may not be passed on to any third party by you without the prior consent of Red Flag Alert LLP who assume no responsibility for the accuracy and correctness of such information and any opinions contained therein or for any consequences of you relying on it for any particular purposes.

**Note:** Industry Sectors - Companies are categorised by SIC classification per their details filed with Companies House.

**North West**  
by Industry Sector - Companies with Critical problems - 3rd Quarter 2015



**North West**  
- by Industry Sector - Companies with Critical problems - 4th Quarter 2015



The information contained in this page is for your sole use and may not be passed on to any third party by you without the prior consent of Red Flag Alert LLP who assume no responsibility for the accuracy and correctness of such information and any opinions contained therein or for any consequences of you relying on it for any particular purposes.

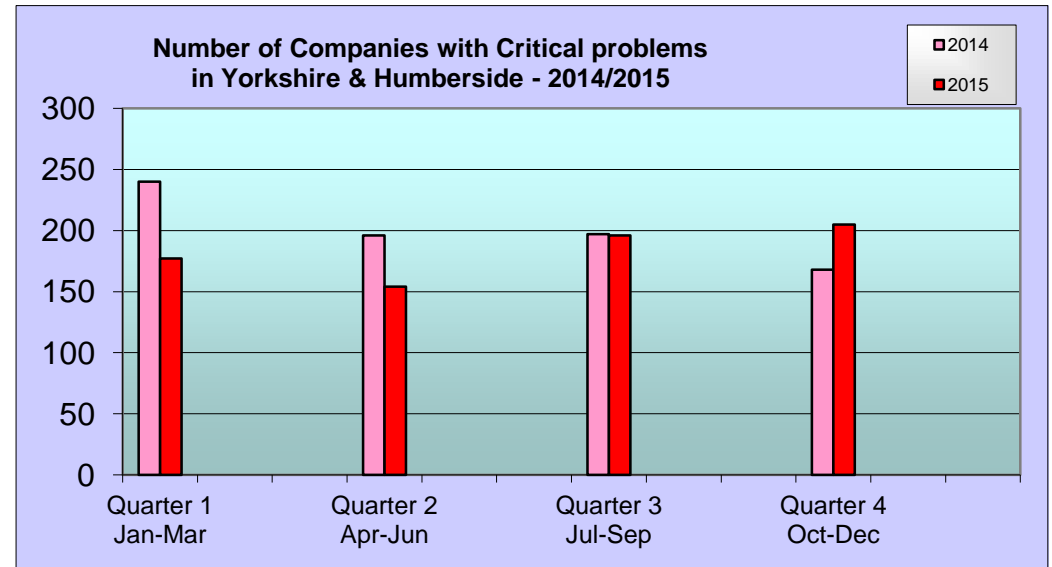


**Note:** The same company may have received more than one action during the period.

Code	Description
Critical problems	These are companies with CCJs totalling £5,000 or more and/or Winding-Up Petition or in a Voluntary Arrangement.

Yorks/Humberside - Critical Problems 2014	
Quarter	No. of Companies
Quarter 1 Jan-Mar	240
Quarter 2 Apr-Jun	196
Quarter 3 Jul-Sep	197
Quarter 4 Oct-Dec	168

Yorks/Humberside - Critical Problems 2015	
Quarter	No. of Companies
Quarter 1 Jan-Mar	177
Quarter 2 Apr-Jun	154
Quarter 3 Jul-Sep	196
Quarter 4 Oct-Dec	205



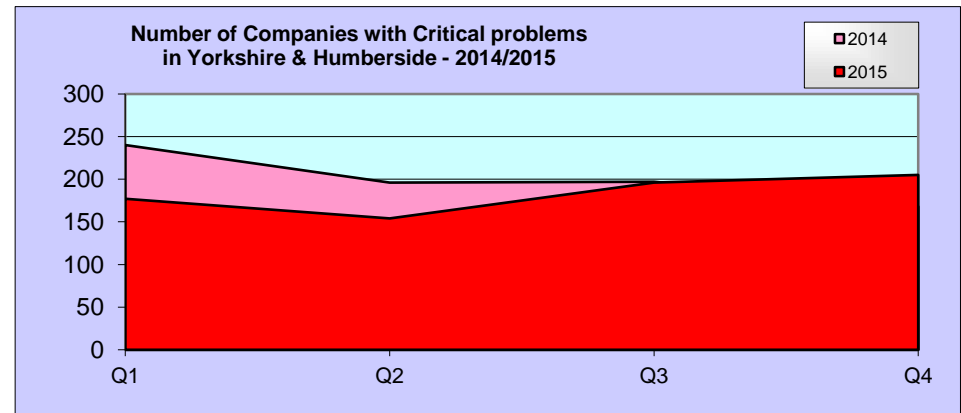
The information contained in this page is for your sole use and may not be passed on to any third party by you without the prior consent of Red Flag Alert LLP who assume no responsibility for the accuracy and correctness of such information and any opinions contained therein or for any consequences of you relying on it for any particular purposes.

**Note:** The same company may have received more than one action during the period.

Code	Description
Critical problems	These are companies with CCJs totalling £5,000 or more and/or Winding-Up Petition or in a Voluntary Arrangement.

**Yorks/Humberside - Companies with Critical problems 2014/2015**

	Q1	Q2	Q3	Q4	Monthly Average	+/- %
2014	240	196	197	168	67	
2015	177	154	196	205	61	-8.6%

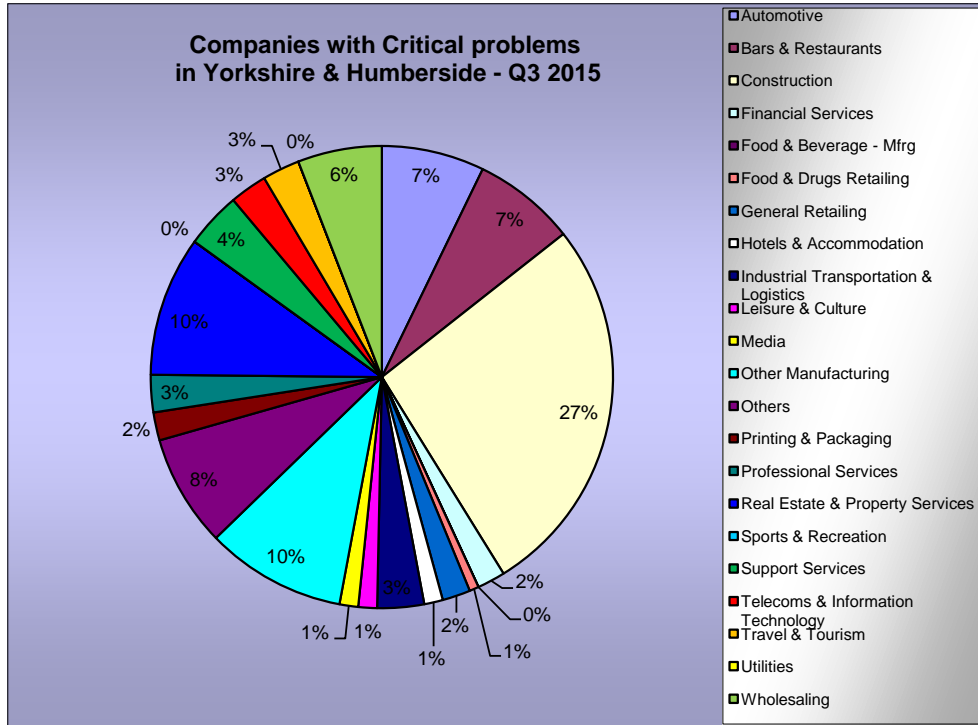


The information contained in this page is for your sole use and may not be passed on to any third party by you without the prior consent of Red Flag Alert LLP who assume no responsibility for the accuracy and correctness of such information and any opinions contained therein or for any consequences of you relying on it for any particular purposes.

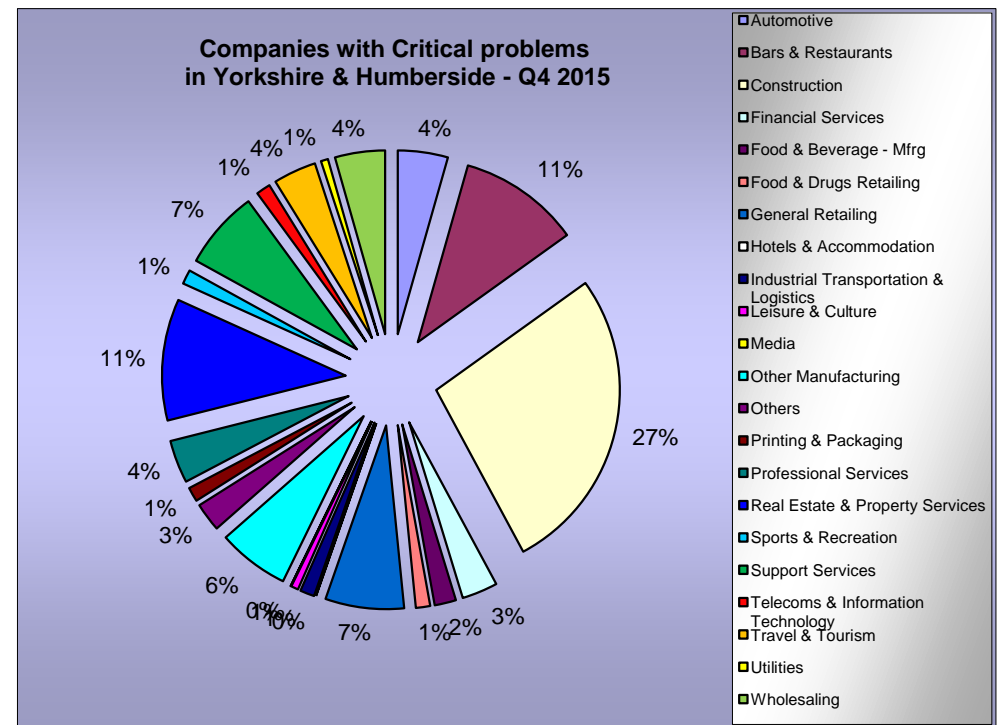


**Note:** Industry Sectors - Companies are categorised by SIC classification per their details filed with Companies House.

**Yorkshire & Humberside  
by Industry Sector - Companies with Critical problems - 3rd Quarter 2015**



**Yorkshire & Humberside  
- by Industry Sector - Companies with Critical problems - 4th Quarter 2015**



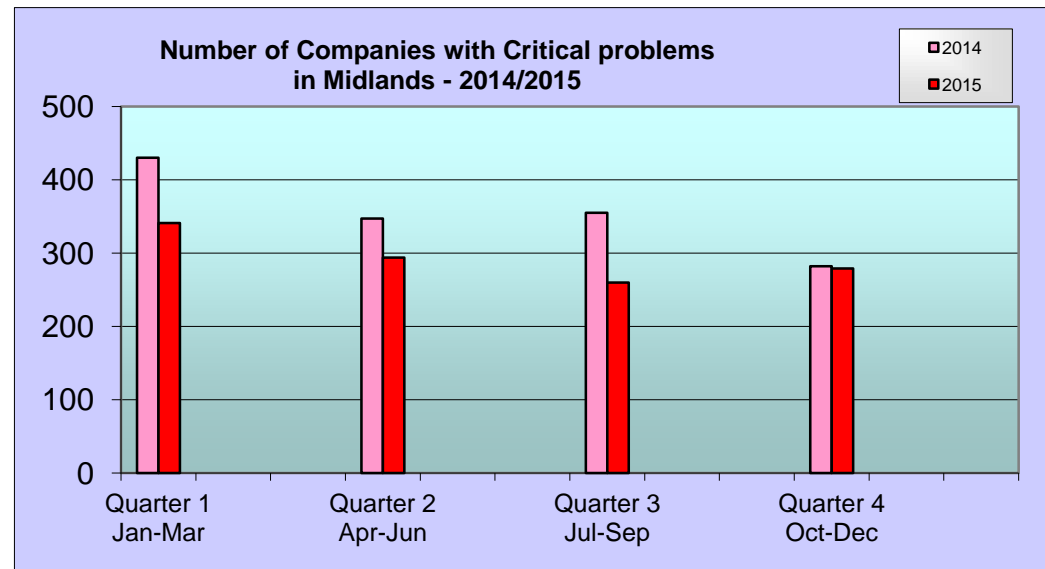
The information contained in this page is for your sole use and may not be passed on to any third party by you without the prior consent of Red Flag Alert LLP who assume no responsibility for the accuracy and correctness of such information and any opinions contained therein or for any consequences of you relying on it for any particular purposes.

**Note:** The same company may have received more than one action during the period.

Code	Description
Critical problems	These are companies with CCJs totalling £5,000 or more and/or Winding-Up Petition or in a Voluntary Arrangement.

Midlands - Critical Problems 2014	
Quarter	No. of Companies
Quarter 1 Jan-Mar	430
Quarter 2 Apr-Jun	347
Quarter 3 Jul-Sep	355
Quarter 4 Oct-Dec	282

Midlands - Critical Problems 2015	
Quarter	No. of Companies
Quarter 1 Jan-Mar	341
Quarter 2 Apr-Jun	294
Quarter 3 Jul-Sep	260
Quarter 4 Oct-Dec	279



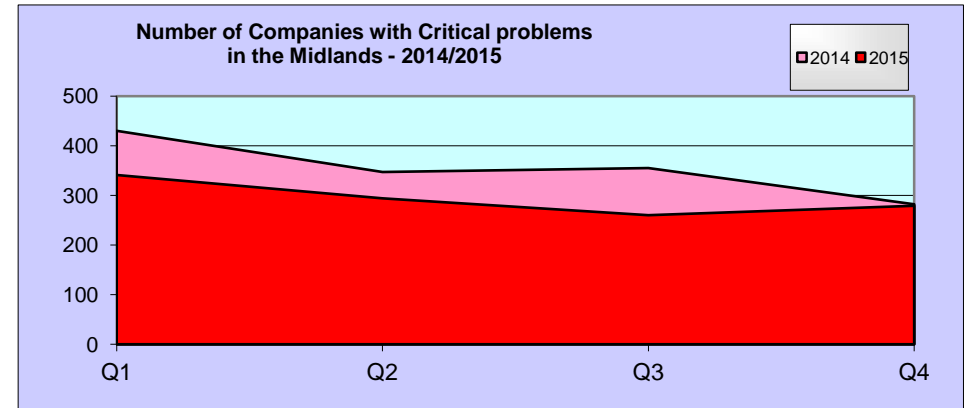
The information contained in this page is for your sole use and may not be passed on to any third party by you without the prior consent of Red Flag Alert LLP who assume no responsibility for the accuracy and correctness of such information and any opinions contained therein or for any consequences of you relying on it for any particular purposes.

**Note:** The same company may have received more than one action during the period.

Code	Description
Critical problems	These are companies with CCJs totalling £5,000 or more and/or Winding-Up Petition or in a Voluntary Arrangement.

### Midlands - Companies with Critical problems 2014/2015

	Q1	Q2	Q3	Q4	Monthly Average	+/- %
2014	430	347	355	282	118	
2015	341	294	260	279	98	-17.0%

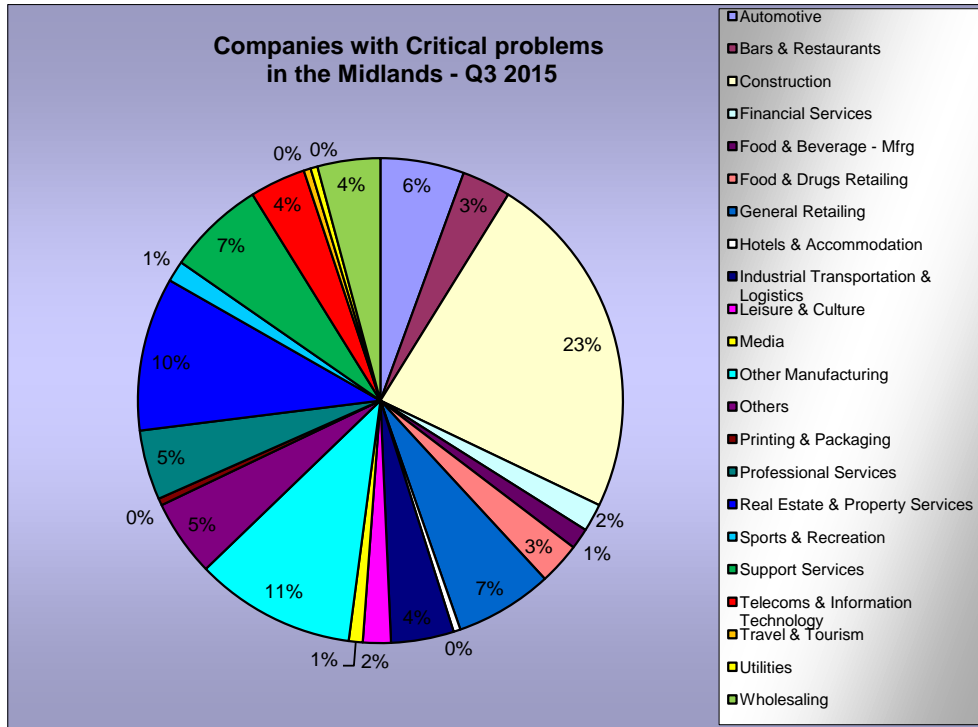


The information contained in this page is for your sole use and may not be passed on to any third party by you without the prior consent of Red Flag Alert LLP who assume no responsibility for the accuracy and correctness of such information and any opinions contained therein or for any consequences of you relying on it for any particular purposes.

**Note:** Industry Sectors - Companies are categorised by SIC classification per their details filed with Companies House.

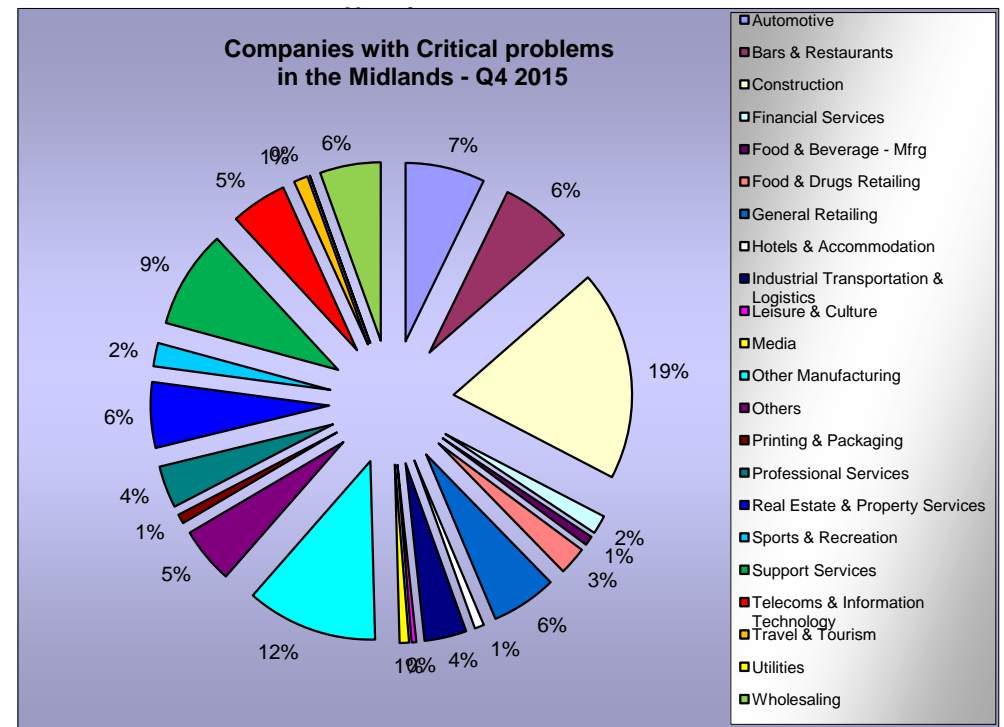
**Midlands**

**by Industry Sector - Companies with Critical problems - 3rd Quarter 2015**



**Midlands**

**- by Industry Sector - Companies with Critical problems - 4th Quarter 2015**



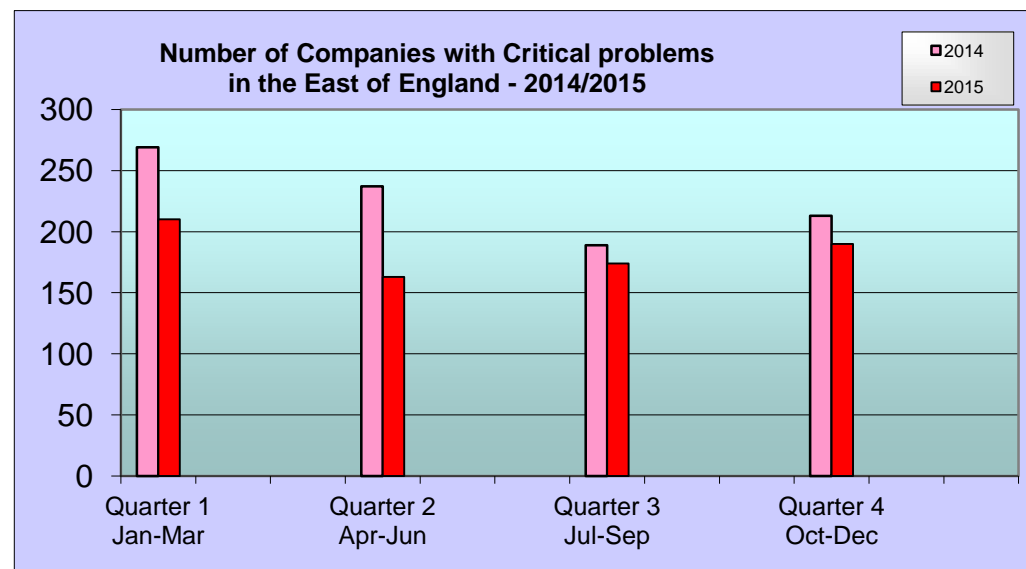
The information contained in this page is for your sole use and may not be passed on to any third party by you without the prior consent of Red Flag Alert LLP who assume no responsibility for the accuracy and correctness of such information and any opinions contained therein or for any consequences of you relying on it for any particular purposes.

**Note:** The same company may have received more than one action during the period.

Code	Description
Critical problems	These are companies with CCJs totalling £5,000 or more and/or Winding-Up Petition or in a Voluntary Arrangement.

East of England - Critical Problems 2014	
Quarter	No. of Companies
Quarter 1 Jan-Mar	269
Quarter 2 Apr-Jun	237
Quarter 3 Jul-Sep	189
Quarter 4 Oct-Dec	213

East of England - Critical Problems 2015	
Quarter	No. of Companies
Quarter 1 Jan-Mar	210
Quarter 2 Apr-Jun	163
Quarter 3 Jul-Sep	174
Quarter 4 Oct-Dec	190



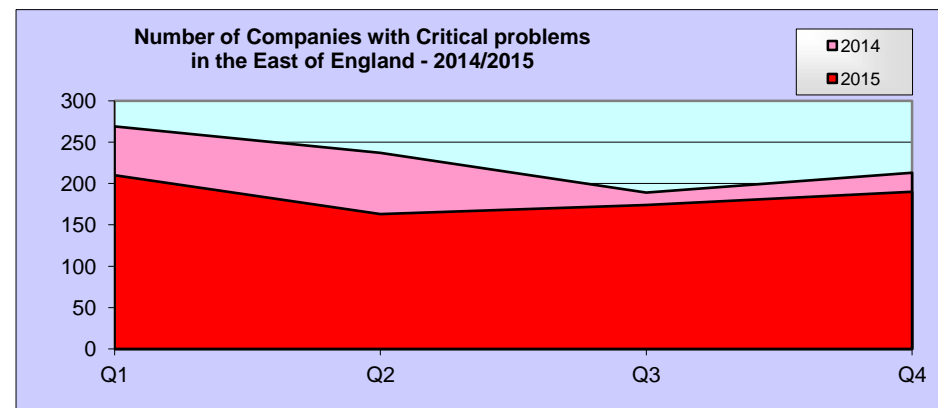
The information contained in this page is for your sole use and may not be passed on to any third party by you without the prior consent of Red Flag Alert LLP who assume no responsibility for the accuracy and correctness of such information and any opinions contained therein or for any consequences of you relying on it for any particular purposes.

**Note:** The same company may have received more than one action during the period.

Code	Description
Critical problems	These are companies with CCJs totalling £5,000 or more and/or Winding-Up Petition or in a Voluntary Arrangement.

### East of England - Companies with Critical problems 2014/2015

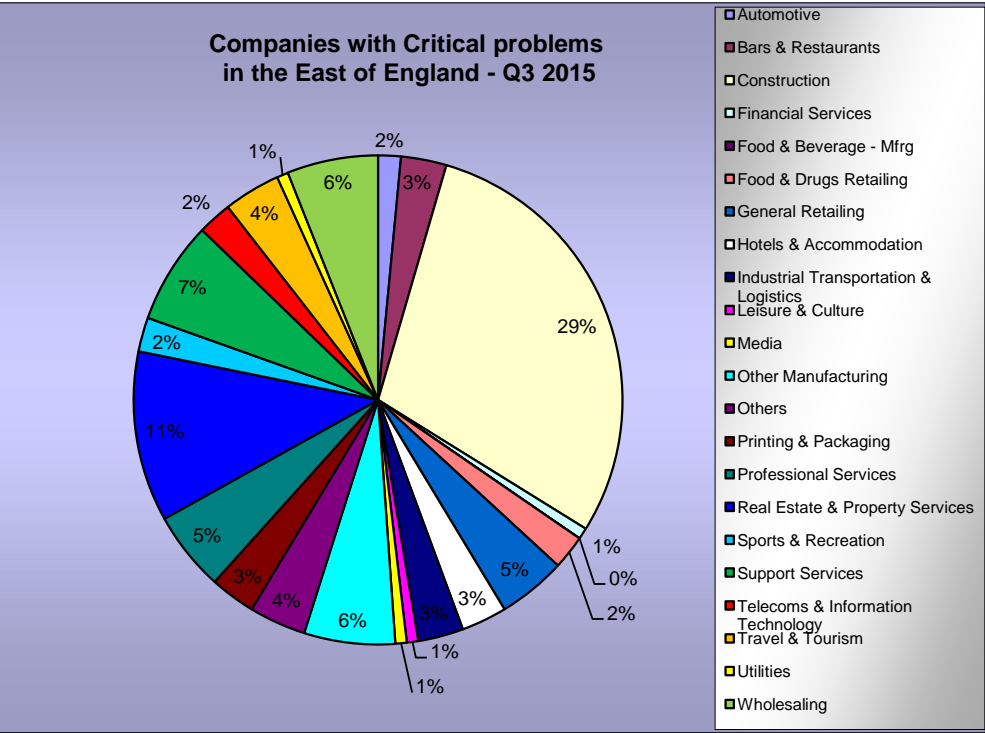
	Q1	Q2	Q3	Q4	Monthly Average	+/- %
2014	269	237	189	213	76	
2015	210	163	174	190	61	-18.8%



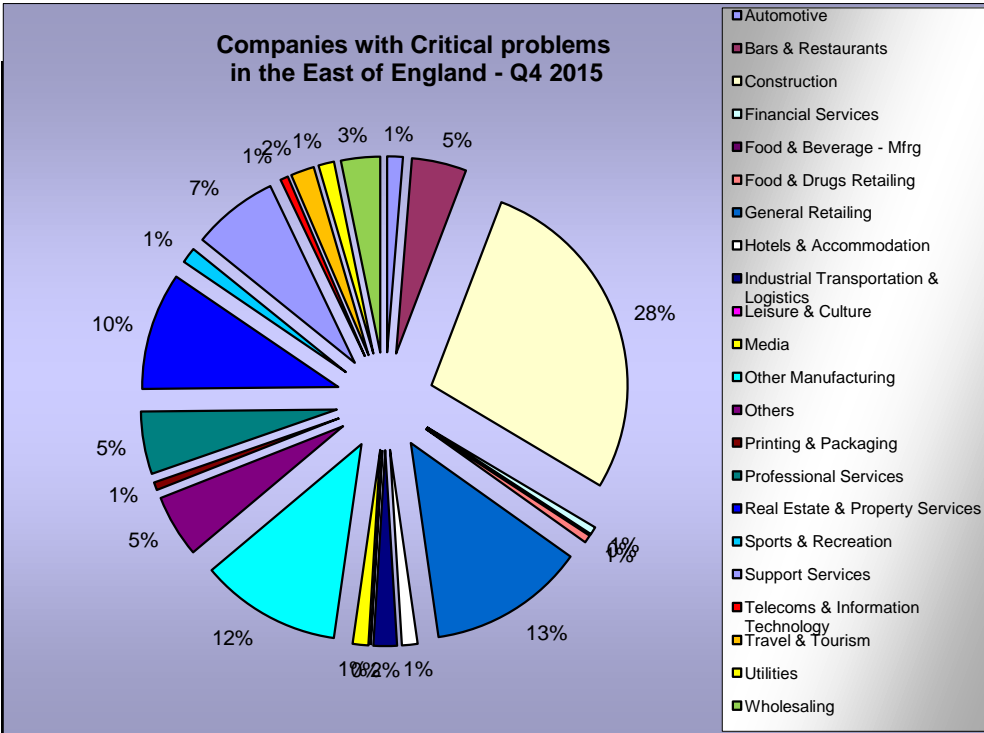
The information contained in this page is for your sole use and may not be passed on to any third party by you without the prior consent of Red Flag Alert LLP who assume no responsibility for the accuracy and correctness of such information and any opinions contained therein or for any consequences of you relying on it for any particular purposes.

**Note:** Industry Sectors - Companies are categorised by SIC classification per their details filed with Companies House.

**East of England**  
**by Industry Sector - Companies with Critical problems - 3rd Quarter 2015**



**East of England**  
**- by Industry Sector - Companies with Critical problems - 4th Quarter 2015**



The information contained in this page is for your sole use and may not be passed on to any third party by you without the prior consent of Red Flag Alert LLP who assume no responsibility for the accuracy and correctness of such information and any opinions contained therein or for any consequences of you relying on it for any particular purposes.

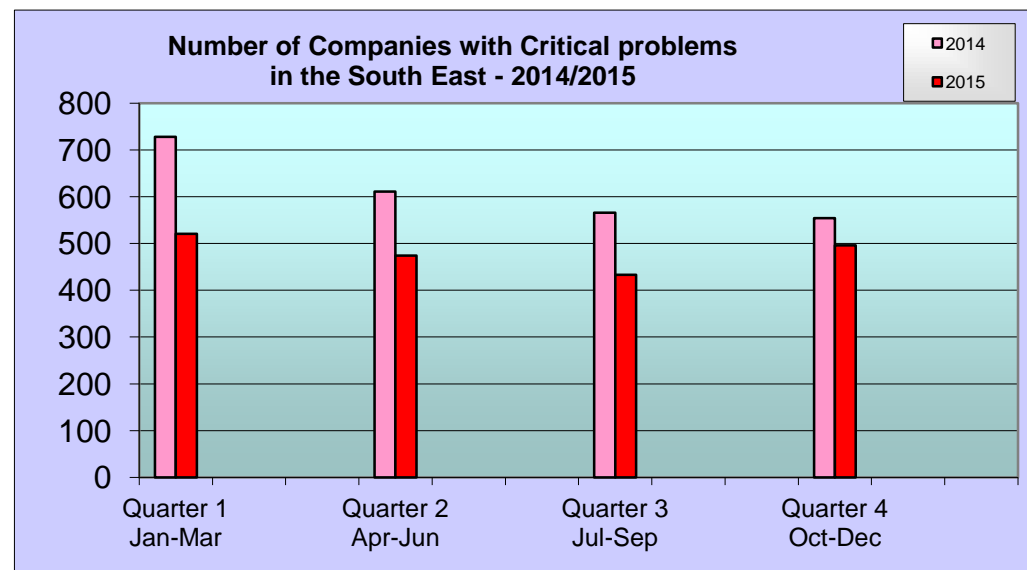


**Note:** The same company may have received more than one action during the period.

Code	Description
Critical problems	These are companies with CCJs totalling £5,000 or more and/or Winding-Up Petition or in a Voluntary Arrangement.

South East - Critical Problems 2014	
Quarter	No. of Companies
Quarter 1 Jan-Mar	728
Quarter 2 Apr-Jun	611
Quarter 3 Jul-Sep	566
Quarter 4 Oct-Dec	554

South East - Critical Problems 2015	
Quarter	No. of Companies
Quarter 1 Jan-Mar	521
Quarter 2 Apr-Jun	474
Quarter 3 Jul-Sep	433
Quarter 4 Oct-Dec	496



The information contained in this page is for your sole use and may not be passed on to any third party by you without the prior consent of Red Flag Alert LLP who assume no responsibility for the accuracy and correctness of such information and any opinions contained therein or for any consequences of you relying on it for any particular purposes.

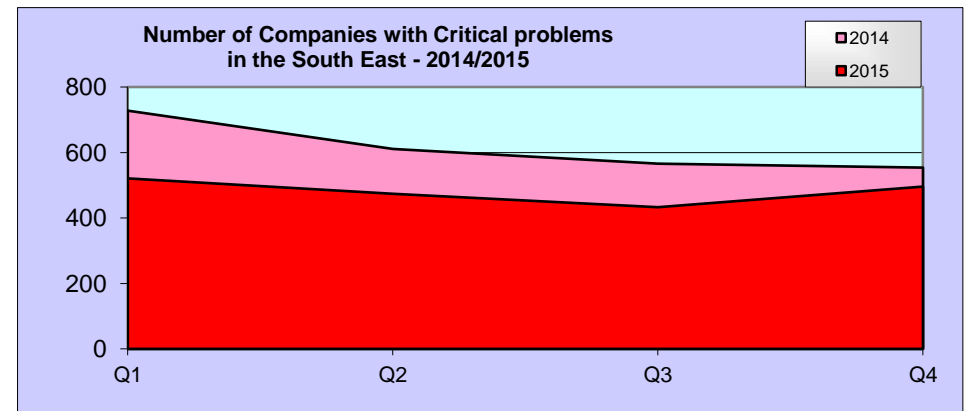


**Note:** The same company may have received more than one action during the period.

Code	Description
Critical problems	These are companies with CCJs totalling £5,000 or more and/or Winding-Up Petition or in a Voluntary Arrangement.

### South East - Companies with Critical problems 2014/2015

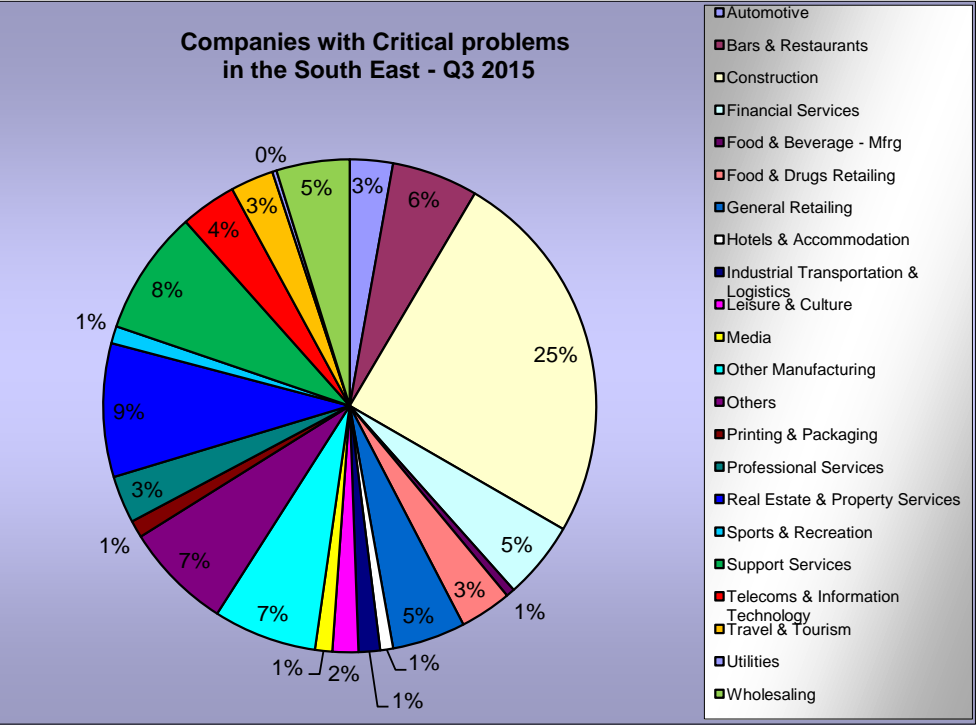
	Q1	Q2	Q3	Q4	Monthly Average	+/- %
2014	728	611	566	554	205	
2015	521	474	433	496	160	-21.8%



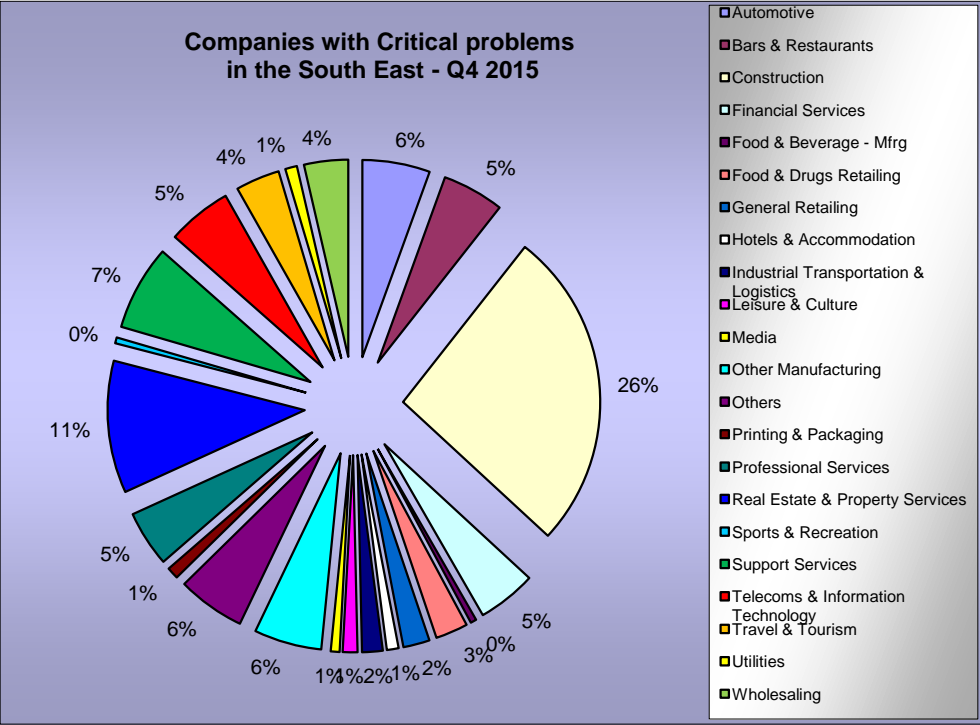
The information contained in this page is for your sole use and may not be passed on to any third party by you without the prior consent of Red Flag Alert LLP who assume no responsibility for the accuracy and correctness of such information and any opinions contained therein or for any consequences of you relying on it for any particular purposes.

**Note:** Industry Sectors - Companies are categorised by SIC classification per their details filed with Companies House.

**South East**  
**by Industry Sector - Companies with Critical problems - 3rd Quarter 2015**



**South East**  
**- by Industry Sector - Companies with Critical problems - 4th Quarter 2015**



The information contained in this page is for your sole use and may not be passed on to any third party by you without the prior consent of Red Flag Alert LLP who assume no responsibility for the accuracy and correctness of such information and any opinions contained therein or for any consequences of you relying on it for any particular purposes.

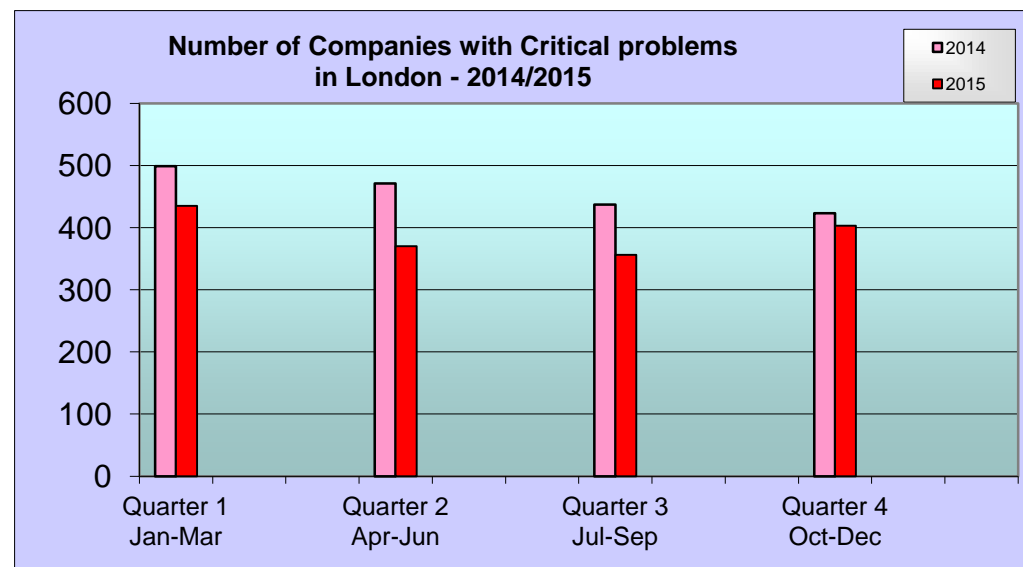


**Note:** The same company may have received more than one action during the period.

Code	Description
Critical problems	These are companies with CCJs totalling £5,000 or more and/or Winding-Up Petition or in a Voluntary Arrangement.

London - Critical Problems 2014	
Quarter	No. of Companies
Quarter 1 Jan-Mar	499
Quarter 2 Apr-Jun	471
Quarter 3 Jul-Sep	437
Quarter 4 Oct-Dec	423

London - Critical Problems 2015	
Quarter	No. of Companies
Quarter 1 Jan-Mar	435
Quarter 2 Apr-Jun	370
Quarter 3 Jul-Sep	356
Quarter 4 Oct-Dec	403



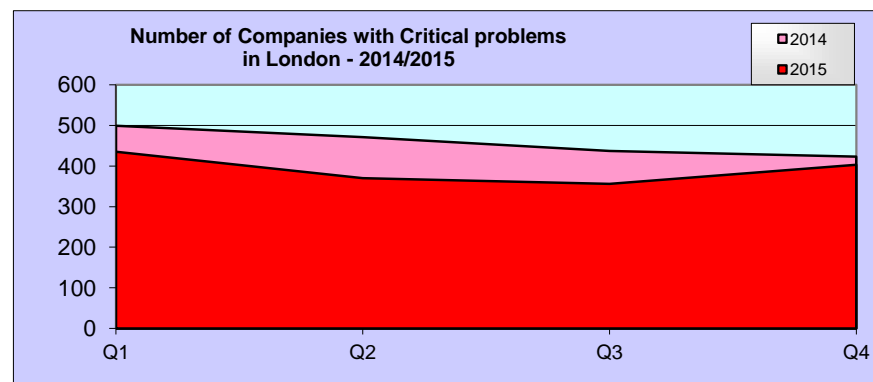
The information contained in this page is for your sole use and may not be passed on to any third party by you without the prior consent of Red Flag Alert LLP who assume no responsibility for the accuracy and correctness of such information and any opinions contained therein or for any consequences of you relying on it for any particular purposes.

**Note:** The same company may have received more than one action during the period.

Code	Description
Critical problems	These are companies with CCJs totalling £5,000 or more and/or Winding-Up Petition or in a Voluntary Arrangement.

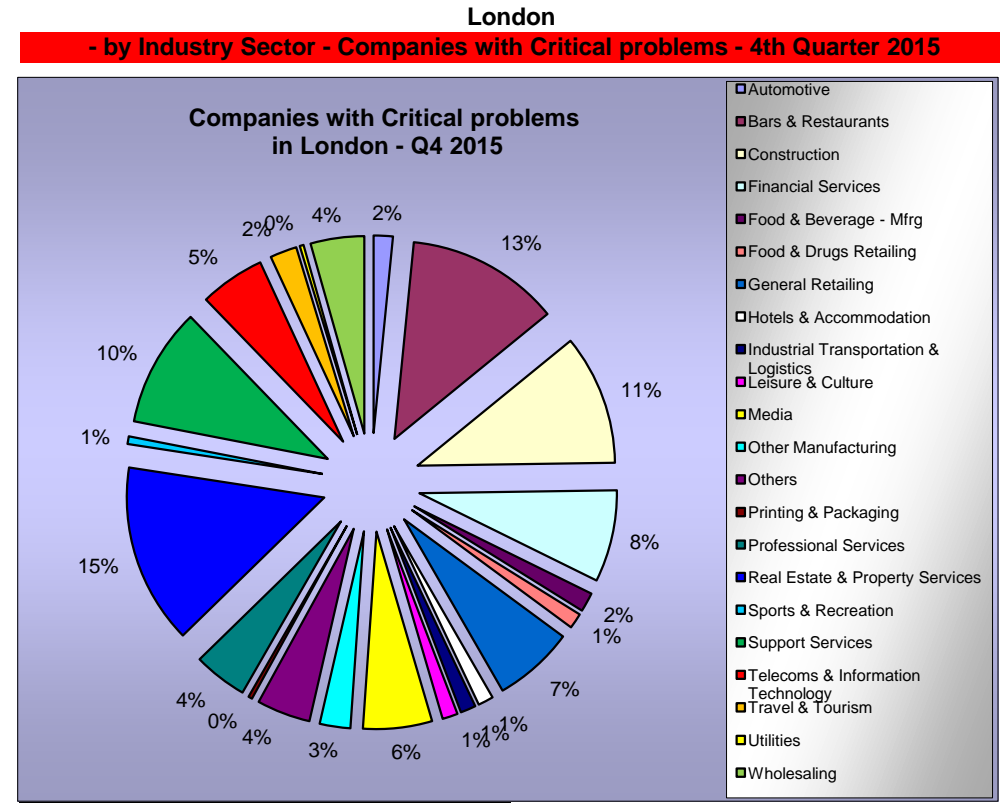
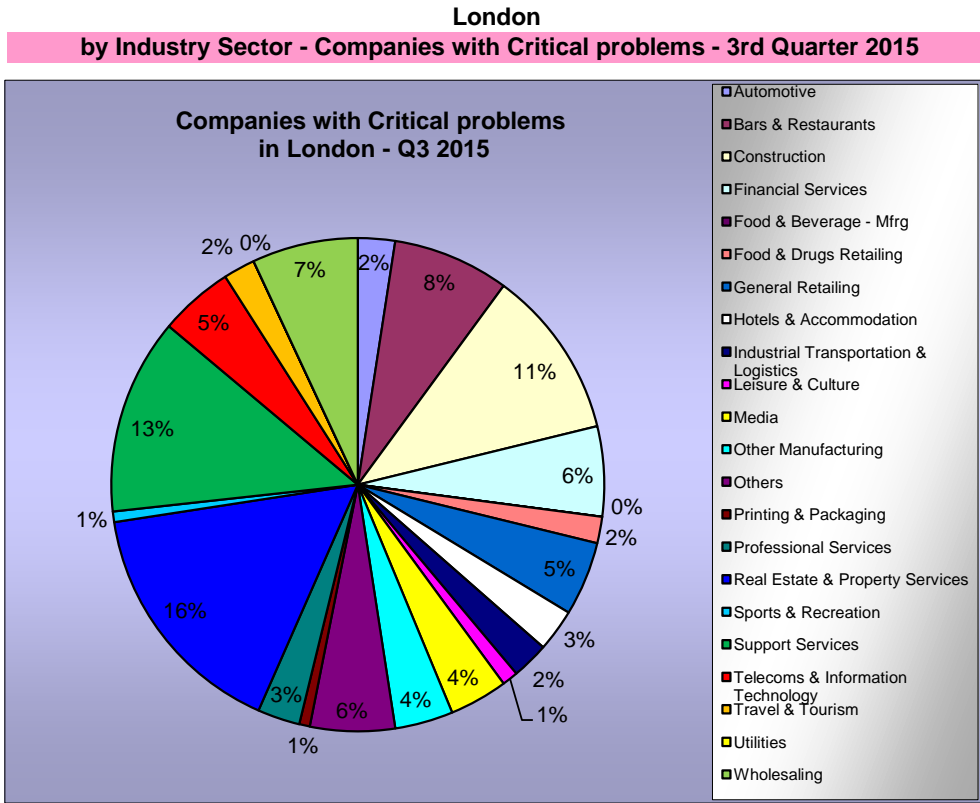
### London - Companies with Critical problems 2014/2015

	Q1	Q2	Q3	Q4	Monthly Average	+/- %
2014	499	471	437	423	153	
2015	435	370	356	403	130	-14.5%



The information contained in this page is for your sole use and may not be passed on to any third party by you without the prior consent of Red Flag Alert LLP who assume no responsibility for the accuracy and correctness of such information and any opinions contained therein or for any consequences of you relying on it for any particular purposes.

**Note:** Industry Sectors - Companies are categorised by SIC classification per their details filed with Companies House.



The information contained in this page is for your sole use and may not be passed on to any third party by you without the prior consent of Red Flag Alert LLP who assume no responsibility for the accuracy and correctness of such information and any opinions contained therein or for any consequences of you relying on it for any particular purposes.

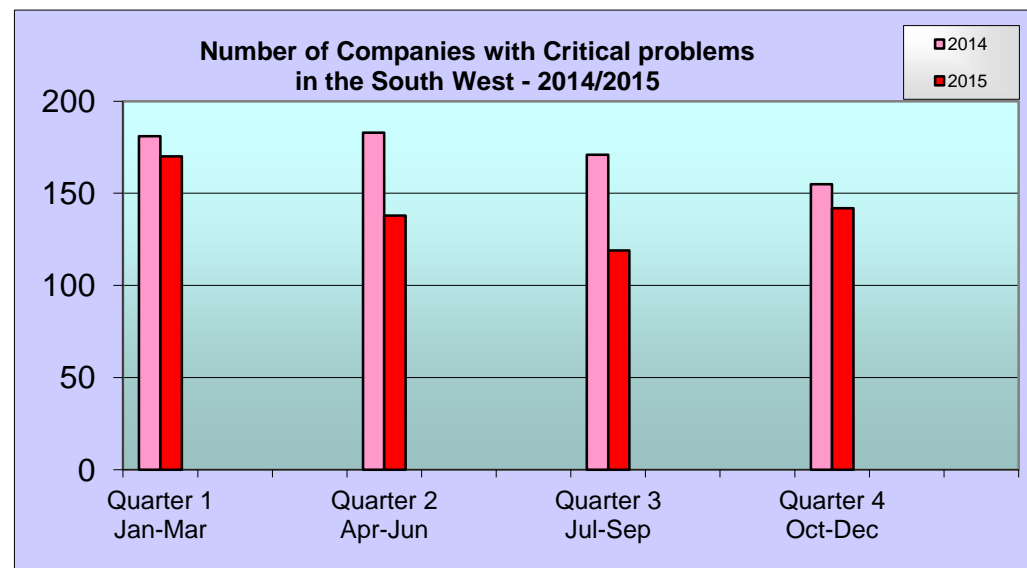


**Note:** The same company may have received more than one action during the period.

Code	Description
Critical problems	These are companies with CCJs totalling £5,000 or more and/or Winding-Up Petition or in a Voluntary Arrangement.

South West - Critical Problems 2014	
Quarter	No. of Companies
Quarter 1 Jan-Mar	181
Quarter 2 Apr-Jun	183
Quarter 3 Jul-Sep	171
Quarter 4 Oct-Dec	155

South West - Critical Problems 2015	
Quarter	No. of Companies
Quarter 1 Jan-Mar	170
Quarter 2 Apr-Jun	138
Quarter 3 Jul-Sep	119
Quarter 4 Oct-Dec	142



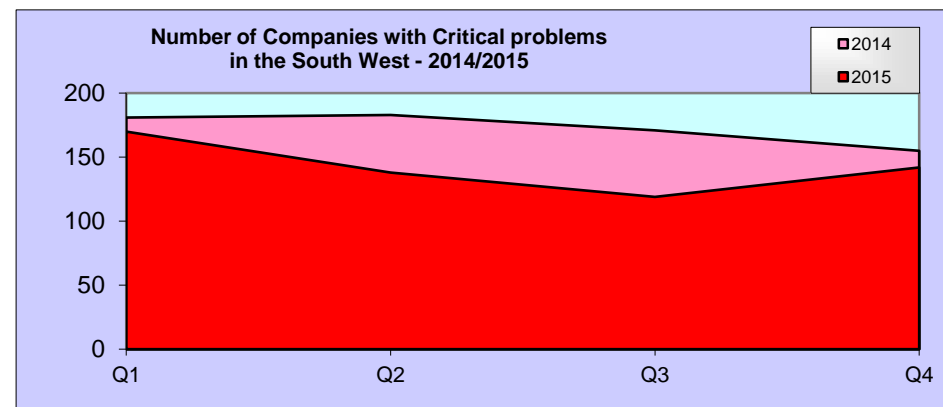
The information contained in this page is for your sole use and may not be passed on to any third party by you without the prior consent of Red Flag Alert LLP who assume no responsibility for the accuracy and correctness of such information and any opinions contained therein or for any consequences of you relying on it for any particular purposes.

**Note:** The same company may have received more than one action during the period.

Code	Description
Critical problems	These are companies with CCJs totalling £5,000 or more and/or Winding-Up Petition or in a Voluntary Arrangement.

### South West - Companies with Critical problems 2014/2015

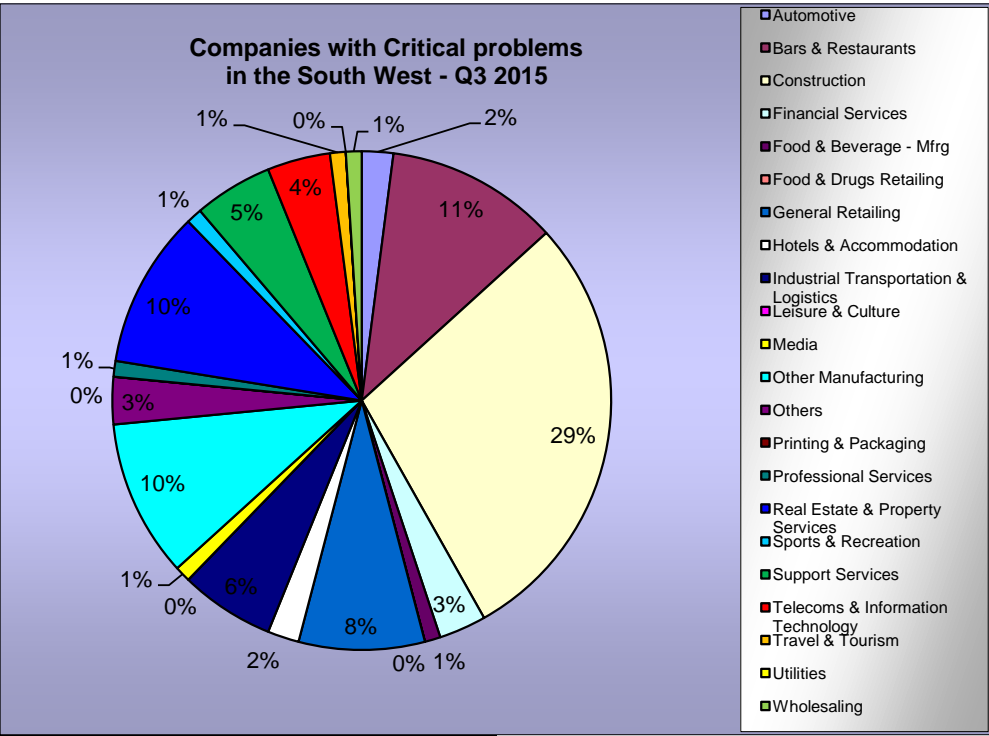
	Q1	Q2	Q3	Q4	Monthly Average	+/- %
2014	181	183	171	155	58	
2015	170	138	119	142	47	-17.5%



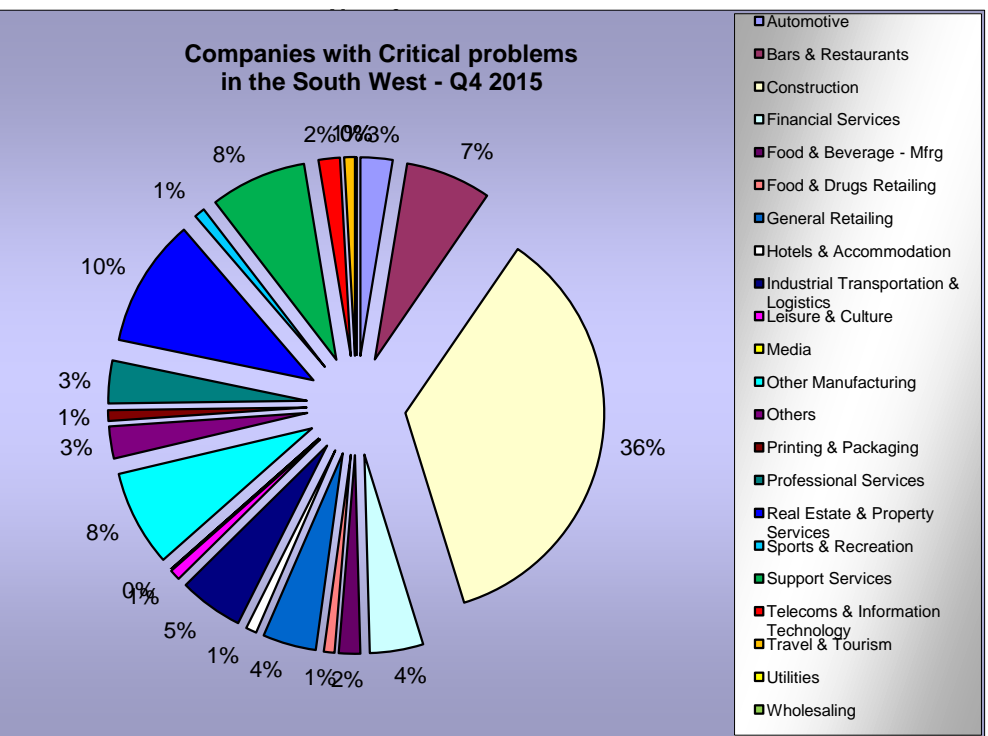
The information contained in this page is for your sole use and may not be passed on to any third party by you without the prior consent of Red Flag Alert LLP who assume no responsibility for the accuracy and correctness of such information and any opinions contained therein or for any consequences of you relying on it for any particular purposes.

**Note:** Industry Sectors - Companies are categorised by SIC classification per their details filed with Companies House.

**South West**  
**by Industry Sector - Companies with Critical problems - 3rd Quarter 2015**



**South West**  
**- by Industry Sector - Companies with Critical problems - 4th Quarter 2015**



The information contained in this page is for your sole use and may not be passed on to any third party by you without the prior consent of Red Flag Alert LLP who assume no responsibility for the accuracy and correctness of such information and any opinions contained therein or for any consequences of you relying on it for any particular purposes.



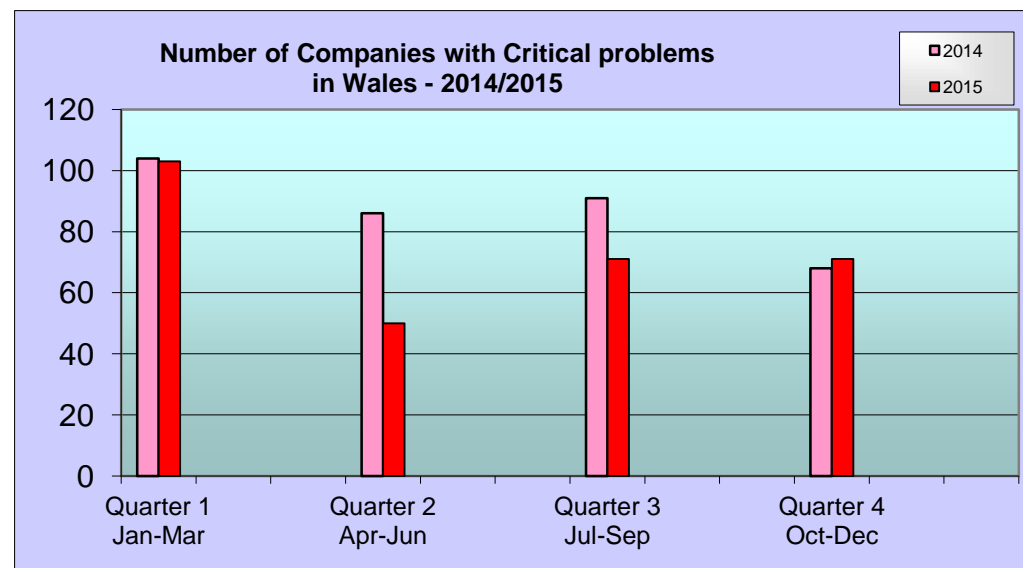


**Note:** The same company may have received more than one action during the period.

Code	Description
Critical problems	These are companies with CCJs totalling £5,000 or more and/or Winding-Up Petition or in a Voluntary Arrangement.

Wales - Critical Problems 2014	
Quarter	No. of Companies
Quarter 1 Jan-Mar	104
Quarter 2 Apr-Jun	86
Quarter 3 Jul-Sep	91
Quarter 4 Oct-Dec	68

Wales - Critical Problems 2015	
Quarter	No. of Companies
Quarter 1 Jan-Mar	103
Quarter 2 Apr-Jun	50
Quarter 3 Jul-Sep	71
Quarter 4 Oct-Dec	71



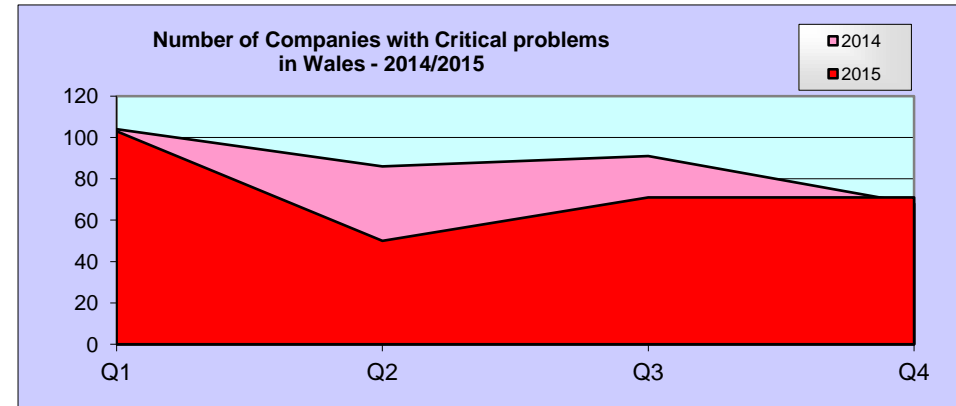
The information contained in this page is for your sole use and may not be passed on to any third party by you without the prior consent of Red Flag Alert LLP who assume no responsibility for the accuracy and correctness of such information and any opinions contained therein or for any consequences of you relying on it for any particular purposes.

**Note:** The same company may have received more than one action during the period.

Code	Description
Critical problems	These are companies with CCJs totalling £5,000 or more and/or Winding-Up Petition or in a Voluntary Arrangement.

### Wales - Companies with Critical problems 2014/2015

	Q1	Q2	Q3	Q4	Monthly Average	+/- %
2014	104	86	91	68	29	
2015	103	50	71	71	25	-15.5%

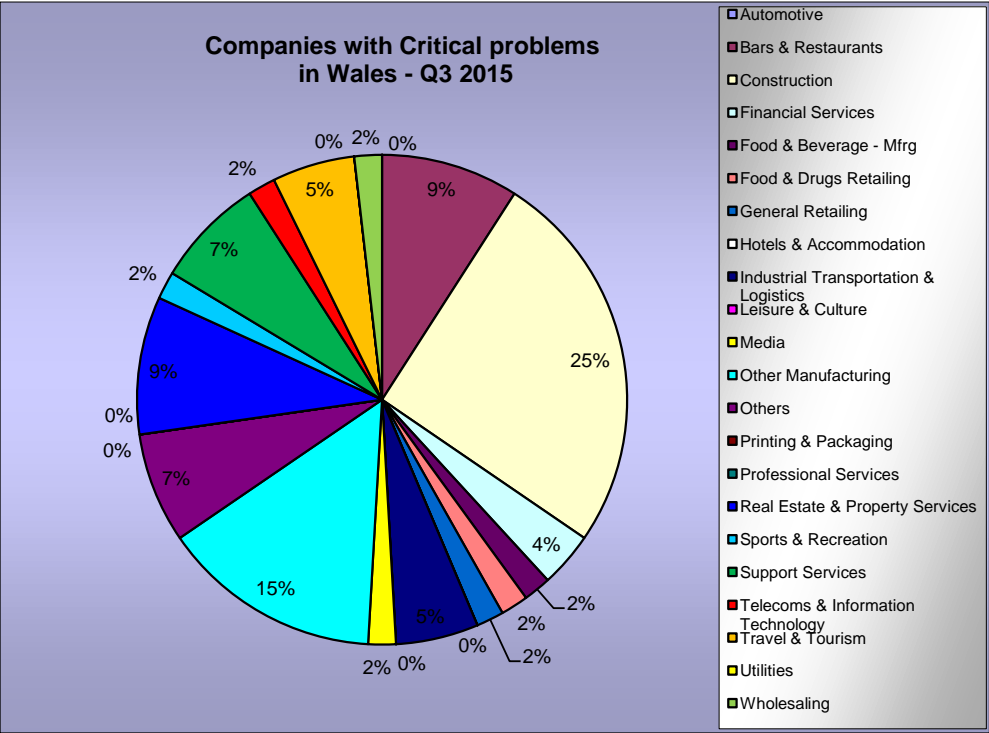


The information contained in this page is for your sole use and may not be passed on to any third party by you without the prior consent of Red Flag Alert LLP who assume no responsibility for the accuracy and correctness of such information and any opinions contained therein or for any consequences of you relying on it for any particular purposes.

**Note:** Industry Sectors - Companies are categorised by SIC classification per their details filed with Companies House.

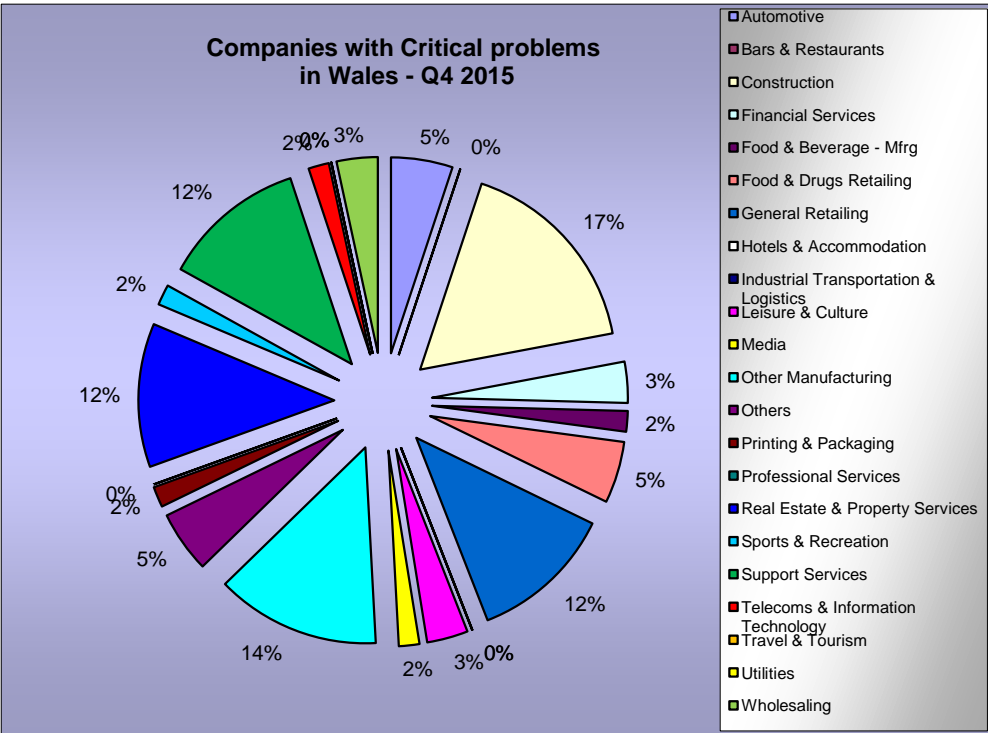
**Wales**

**- by Industry Sector - Companies with Critical problems - 3rd Quarter 2015**



**Wales**

**- by Industry Sector - Companies with Critical problems - 4th Quarter 2015**



The information contained in this page is for your sole use and may not be passed on to any third party by you without the prior consent of Red Flag Alert LLP who assume no responsibility for the accuracy and correctness of such information and any opinions contained therein or for any consequences of you relying on it for any particular purposes.

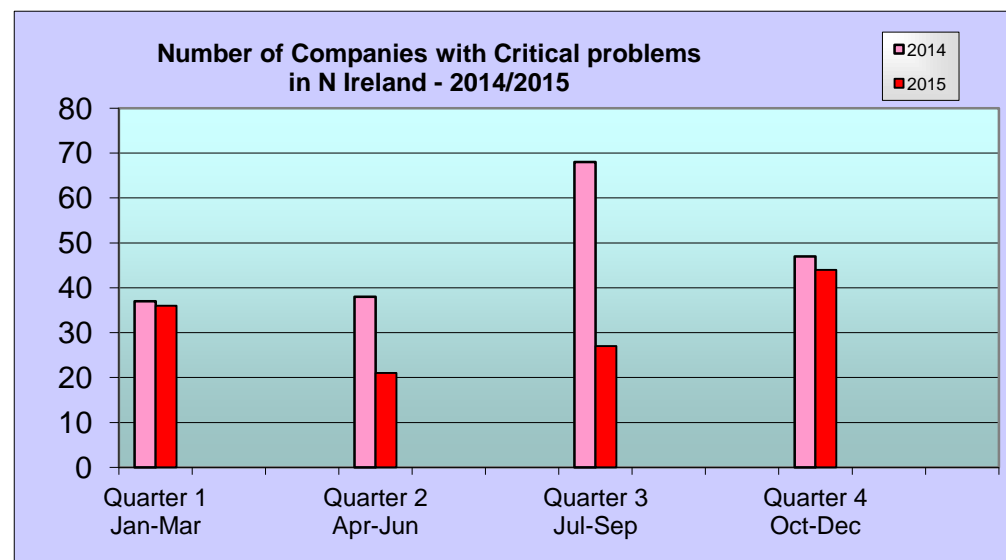


**Note:** The same company may have received more than one action during the period.

Code	Description
Critical problems	These are companies with CCJs totalling £5,000 or more and/or Winding-Up Petition or in a Voluntary Arrangement.

Northern Ireland - Critical Problems 2014	
Quarter	No. of Companies
Quarter 1 Jan-Mar	37
Quarter 2 Apr-Jun	38
Quarter 3 Jul-Sep	68
Quarter 4 Oct-Dec	47

Northern Ireland - Critical Problems 2015	
Quarter	No. of Companies
Quarter 1 Jan-Mar	36
Quarter 2 Apr-Jun	21
Quarter 3 Jul-Sep	27
Quarter 4 Oct-Dec	44



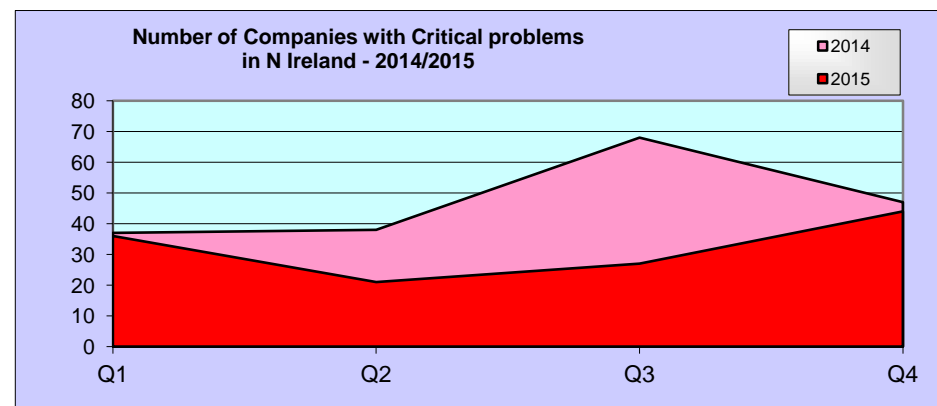
The information contained in this page is for your sole use and may not be passed on to any third party by you without the prior consent of Red Flag Alert LLP who assume no responsibility for the accuracy and correctness of such information and any opinions contained therein or for any consequences of you relying on it for any particular purposes.

**Note:** The same company may have received more than one action during the period.

Code	Description
Critical problems	These are companies with CCJs totalling £5,000 or more and/or Winding-Up Petition or in a Voluntary Arrangement.

**Northern Ireland - Companies with Critical problems 2014/2015**

	Q1	Q2	Q3	Q4	Monthly Average	+/- %
2014	37	38	68	47	16	
2015	36	21	27	44	11	-32.6%

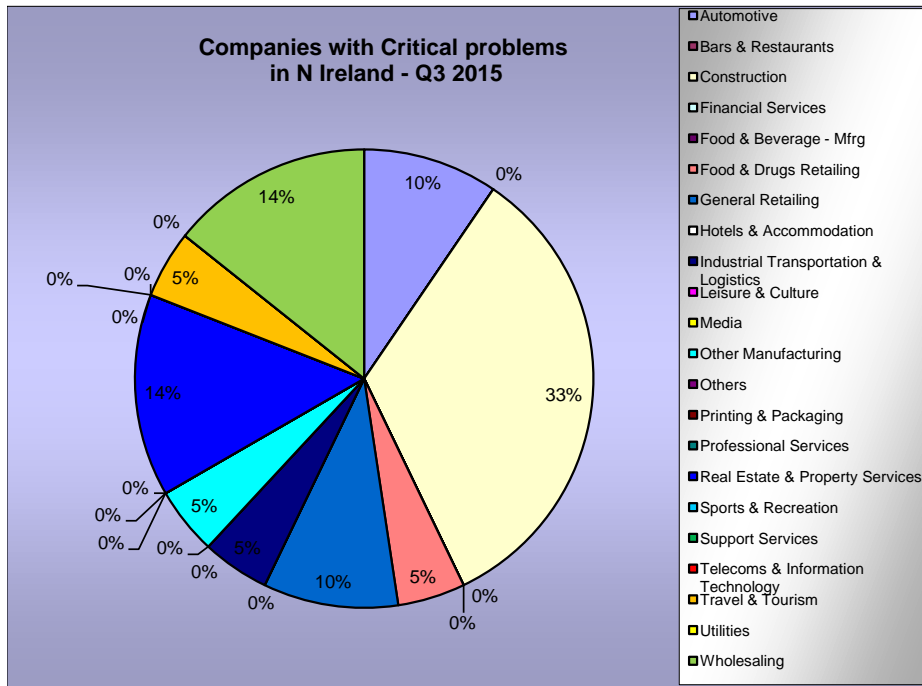


The information contained in this page is for your sole use and may not be passed on to any third party by you without the prior consent of Red Flag Alert LLP who assume no responsibility for the accuracy and correctness of such information and any opinions contained therein or for any consequences of you relying on it for any particular purposes.

**Note:** Industry Sectors - Companies are categorised by SIC classification per their details filed with Companies House.

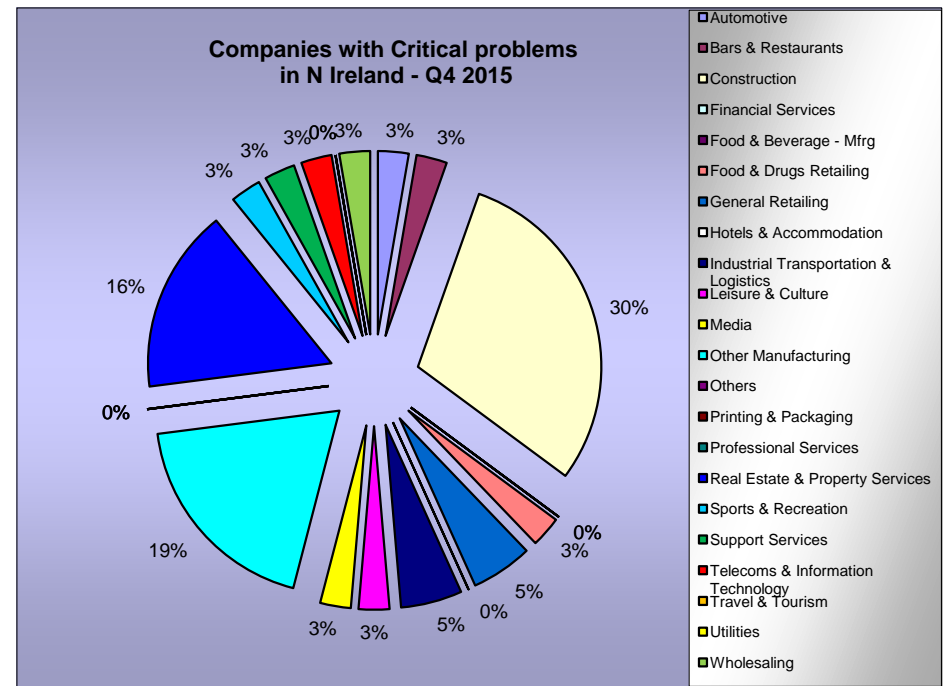
**Northern Ireland**

**- by Industry Sector - Companies with Critical problems - 3rd Quarter 2015**



**Northern Ireland**

**- by Industry Sector - Companies with Critical problems - 4th Quarter 2015**



The information contained in this page is for your sole use and may not be passed on to any third party by you without the prior consent of Red Flag Alert LLP who assume no responsibility for the accuracy and correctness of such information and any opinions contained therein or for any consequences of you relying on it for any particular purposes.



Red Flag Reporting Sector	SIC Code and Description
<p align="center"><b>Automotive</b></p>	<p>3410 - Manufacture of motor vehicles.            3420 - Manufacture of bodies for motor vehicles; manufacture of trailers and semi-trailers.            3430 - Manufacture of parts and accessories for motor vehicles and their engines.            3541 - Manufacture of motorcycles.            3543 - Manufacture of invalid carriages.            3550 - Manufacture of other transport equipment not elsewhere classified.            2320 - Manufacture of refined petroleum products.            2511 - Manufacture of rubber tyres and tubes.            2512 - Retreading and rebuilding of rubber tyres.            3161 - Manufacture of electrical equipment for engines and vehicles not elsewhere classified.</p>
	<p>5010 - Sale of motor vehicles.            5020 - Maintenance and repair of motor vehicles.            5030 - Sale of motor vehicle parts and accessories.            5040 - Sale, maintenance and repair of motorcycles and related parts and accessories.            5050 - Retail sale of automotive fuel.            7110 - Renting of automobiles.</p>
<p align="center"><b>Building - Construction</b></p>	<p>4511 - Demolition and wrecking of buildings; earth moving.            4512 - Test drilling and boring.            4521 - General construction of buildings and civil engineering works.            4522 - Erection of roof covering and frames.            4525 - Other construction work involving special trades.            4531 - Installation of electrical wiring and fittings.            4532 - Insulation work activities.            4533 - Plumbing.            4534 - Other building installation.            4541 - Plastering.            4542 - Joinery installation.            4543 - Floor or wall covering.            4544 - Painting and glazing.            4545 - Other building completion.            4550 - Renting of construction or demolition equipment with operator.            7132 - Renting of construction and civil engineering machinery and equipment.</p>
	<p>4523 - Construction of motorways, roads, railways, airfields and sports facilities.            4524 - Construction of water projects.</p>

Red Flag Reporting Sector	SIC Code and Description
<b>Building - Materials</b>	2010 - Saw milling and planing of wood 2020 - Manufacture of veneer sheets; manufacture of plywood, laminboard, particle board and other panels and boards 2030 - Manufacture of builders' carpentry and joinery 2051 - Manufacture of other products of wood 2523 - Manufacture of builders' ware of plastic 2611 - Manufacture of flat glass 2612 - Shaping and processing of flat glass 2622 - Manufacture of ceramic sanitary fixtures 2623 - Manufacture of ceramic insulators and insulating fittings 2624 - Manufacture of other technical ceramic products 2630 - Manufacture of ceramic tiles and flags 2640 - Manufacture of bricks, tiles and construction products, in baked clay 2651 - Manufacture of cement 2652 - Manufacture of lime 2653 - Manufacture of plaster 2661 - Manufacture of concrete products for construction purposes 2662 - Manufacture of plaster products for construction purposes 2663 - Manufacture of ready-mixed concrete 2664 - Manufacture of mortars 2665 - Manufacture of fibre cement 2666 - Manufacture of other articles of concrete, plaster and cement 2670 - Cutting, shaping and finishing or ornamental and building stone 2812 - Manufacture of builders' carpentry and joinery of metal 2822 - Manufacture of central heating radiators and boilers 5113 - Agents involved in the sale of timber and building materials 5153 - Wholesale of wood, construction materials and sanitary equipment 5154 - Wholesale of hardware, plumbing and heating equipment and supplies



Red Flag Reporting Sector	SIC Code and Description
<p align="center"><b>Food &amp; Beverages Manufacturing</b></p>	<p>1511 - Production and preserving of meat            1512 - Production and preserving of poultry meat            1513 - Production of meat and poultry meat products            1520 - Processing and preserving of fish and fish products            1531 - Processing and preserving of potatoes            1532 - Manufacture of fruit and vegetable juice            1533 - Processing and preserving of fruit and vegetables not elsewhere classified            1542 - Manufacture of refined oils and fats            1543 - Manufacture of margarine and similar edible fats            1551 - Operation of dairies and cheese making            1552 - Manufacture of ice cream            1561 - Manufacture of grain mill products            1562 - Manufacture of starch and starch products            1571 - Manufacture of prepared feed for farm animals            1572 - Manufacture of prepared pet foods            1581 - Manufacture of bread; manufacture of fresh pastry goods and cakes            1582 - Manufacture of rusks and biscuits; manufacture of preserved pastry goods and cakes            1583 - Manufacture of sugar            1584 - Manufacture of cocoa, chocolate and sugar confectionery            1585 - Manufacture of macaroni, noodles, couscous and similar farinaceous products            1586 - Processing of tea and coffee            1587 - Manufacture of condiments and seasonings            1588 - Manufacture of homogenised food preparations and dietetic food            1589 - Manufacture of other food products not elsewhere classified            1591 - Manufacture of distilled potable alcoholic beverages            1592 - Production of ethyl alcohol from fermented materials            1593 - Manufacture of wines            1594 - Manufacture of cider and other fruit wines            1595 - Manufacture of other non-distilled fermented beverages            1596 - Manufacture of beer            1597 - Manufacture of malt            1598 - Manufacture of mineral waters and soft drinks</p>
<p align="center"><b>Printing &amp; Packaging</b></p>	<p>2121 - Manufacture of corrugated paper and paperboard and of containers of paper and paperboard            2125 - Manufacture of other articles of paper and paperboard not elsewhere classified            7482 - Packaging activities            2221 - Printing of newspapers            2222 - Printing not elsewhere classified            2223 - Bookbinding            2224 - Pre-press activities            2225 - Ancillary activities related to printing</p>

Red Flag Reporting Sector	SIC Code and Description
<b>Other Manufacturing</b>	<p>1710 - Preparation and spinning of textile fibres            1720 - Textile weaving            1730 - Finishing of textiles            1740 - Manufacture of made-up textile articles, except apparel            1750 - Manufacture of other textiles            1760 - Manufacture of knitted and crocheted fabrics            1770 - Manufacture of knitted and crocheted articles            1810 - Manufacture of leather clothes            1820 - Manufacture of other wearing apparel and accessories            1830 - Dressing and dyeing of fur; manufacture of articles of fur            2470 - Manufacture of man-made fibres</p> <hr/> <p>2410 - Manufacture of basic chemicals            2420 - Manufacture of pesticides and other agro-chemical products            2430 - Manufacture of paints, varnishes and similar coatings, printing ink and mastics            2440 - Manufacture of pharmaceuticals, medicinal chemicals and botanical products            2450 - Manufacture of soap and detergents, cleaning and polishing preparations, perfumes and toilet preparations            2460 - Manufacture of other chemical products</p> <hr/> <p>Other items:- 1541, 1600, 1910, 1920, 1930, 2040, 2052, 2111, 2112, 2122, 2123, 2124, 2310, 2320, 2330, 2513, 2521, 2522, 2523, 2524, 2615, 2621, 2613, 2614, 2626, 2681, 2682, 2710, 2721, 2722, 2731, 2732, 2733, 2734, 2741, 2742, 2743, 2744, 2745, 2751, 2752, 2753, 2754, 2811, 2821, 2830, 2851, 2852, 2861, 2862, 2863, 2871, 2872, 2873, 2874, 2875, 2911, 2912, 2913, 2914, 2921, 2922, 2923, 2924, 2931, 2932, 2941, 2942, 2943, 2951, 2952, 2953, 2954, 2955, 2956, 2960, 2971, 2972, 3001, 3110, 3120, 3130, 3140, 3150, 3162, 3210, 3310, 3320, 3330, 3340, 3350, 3511, 3512, 3520, 3530, 3542, 3611, 3612, 3613, 3614, 3615, 3621, 3622, 3630, 3650, 3661, 3662, 3663, 3710, 3720</p>
<b>Financial Services</b>	<p>6511 - Central banking            6512 - Other monetary intermediation            6521 - Financial leasing            6522 - Other credit granting            6523 - Other financial intermediation not elsewhere classified            6601 - Life insurance            6602 - Pension funding            6603 - Non-life insurance            6711 - Administration of financial markets            6712 - Security broking and fund management            6713 - Activities auxiliary to financial intermediation not elsewhere classified            6720 - Activities auxiliary to insurance and pension funding</p>
<b>Real Estate &amp; Property Services</b>	<p>7011 - Development and selling of real estate            7012 - Buying and selling of own real estate            7020 - Letting of own property            7031 - Real estate agencies            7032 - Management of real estate on a fee or contract basis</p>

Red Flag Reporting Sector	SIC Code and Description
<b>Professional Services</b>	7411 - Legal activities 7412 - Accounting, book-keeping and auditing activities; tax consultancy 7414 - Business and management consultancy activities 7420 - Architectural and engineering activities and related technical consultancy
<b>Support Services</b>	7131 - Renting of agricultural machinery and equipment 7133 - Renting of office machinery and equipment including computers 7134 - Renting of other machinery and equipment not elsewhere classified 7250 - Maintenance and repair of office, accounting and computer machinery 7310 - Research and development on natural sciences and engineering 7320 - Research and development on social sciences and humanities 7415 - Management activities of holding companies 7430 - Technical testing and analysis 7450 - Labour recruitment and provision of personnel 7460 - Investigation and security activities 7470 - Industrial cleaning 7485 - Secretarial and translation activities 7487 - Other business activities not elsewhere classified 9305 - Other service activities not elsewhere classified
<b>Media</b>	7481 - Photographic activities 7413 - Market research and opinion polling 7440 - Advertising 9240 - News agency activities 2214 - Publishing of sound recordings 2231 - Reproduction of sound recordings 2232 - Reproduction of video recordings 9211 - Motion picture and video production 9212 - Motion picture and video distribution 9213 - Motion picture projection 9220 - Radio and television activities 2211 - Publishing of books 2212 - Publishing of newspapers 2213 - Publishing of journals and periodicals 2215 - Other publishing

Red Flag Reporting Sector	SIC Code and Description
<p><b>Leisure Hotels &amp; Accommodation</b></p>	<p>5510 - Hotels 5521 - Youth hostels and mountain refuges 5522 - Camping sites, including caravan sites 5523 - Other provision of lodgings not elsewhere classified</p>
<p><b>Leisure Bars &amp; Restaurants</b></p>	<p>5530 - Restaurants 5540 - Bars 5551 - Canteens 5552 - Catering</p>
<p><b>Leisure Sports &amp; Health Clubs</b></p>	<p>9261 - Operation of sports arena and stadiums 9262 - Other sporting activities 9272 - Other recreational activities not elsewhere classified 9304 - Physical well-being activities</p>
<p><b>Leisure Cultural Activities</b></p>	<p>9231 - Artistic and literary creation and interpretation 9232 - Operation of arts facilities 9233 - Fair and amusement park activities 9234 - Other entertainment activities not elsewhere classified 9251 - Library and archive activities 9252 - Museum activities and preservation of historical sites and buildings 9253 - Botanical and zoological gardens and nature reserve activities 9271 - Gambling and betting activities</p>
<p><b>Travel &amp; Tourism</b></p>	<p>6210 - Scheduled air transport 6220 - Non-scheduled air transport 6323 - Other supporting air transport activities 6330 - Activities of travel agents and tour operators; tourist activities not elsewhere classified</p> <p>6010 - Transport via railways 6021 - Other scheduled passenger land transport 6022 - Taxi operation 6023 - Other passenger land transport 6321 - Other supporting land transport activities</p>
<p><b>Food &amp; Drug Retailers</b></p>	<p>5211 - Retail sale in non-specialised stores with food, beverages or tobacco predominating 5221 - Retail sale of fruit and vegetables 5222 - Retail sale of meat and meat products 5223 - Retail sale of fish, crustaceans and molluscs 5224 - Retail sale of bread, cakes, flour confectionery and sugar confectionery 5225 - Retail sale of alcoholic and other beverages 5226 - Retail sale of tobacco products 5227 - Other retail sale of food, beverages and tobacco in specialised stores 5231 - Dispensing chemists 5232 - Retail sale of medical and orthopaedic goods 5233 - Retail sale of cosmetic and toilet articles</p>

Red Flag Reporting Sector	SIC Code and Description
<p><b>General Retailers</b></p>	<p>5212 - Other retail sale in non-specialised stores            5241 - Retail sale of textiles            5242 - Retail sale of clothing            5243 - Retail sale of footwear and leather goods            5244 - Retail sale of furniture, lighting equipment and household articles not elsewhere classified            5245 - Retail sale of electrical household appliances and radio and television goods            5246 - Retail sale of hardware, paints and glass            5247 - Retail sale of books, newspapers and stationery            5248 - Other retail sale in specialised stores            5250 - Retail sale of second-hand goods in stores            5261 - Retail sale via mail order house            5262 - Retail sale via stalls and markets            5263 - Other non-store retail sale            5271 - Repair of boots, shoes and other articles of leather            5272 - Repair of electrical household goods            5273 - Repair of watches, clocks and jewellery            5274 - Repair not elsewhere classified            9301 - Washing and dry cleaning of textile and fur products            9302 - Hairdressing and other beauty treatment</p>
<p><b>Industrial Transportation &amp; Logistics</b></p>	<p>6024 - Freight transport by road            6311 - Cargo handling            6312 - Storage and warehousing            6340 - Activities of other transport agencies</p>
<p><b>Telecommunications &amp; Information Technology</b></p>	<p>6420 - Telecommunications</p> <hr/> <p>3002 - Manufacture of computers and other information processing equipment            5184 - Wholesale of computers, computer peripherals and software            7210 - Hardware consulting            7221 - Publishing of software            7222 - Other software consultancy and supply            7230 - Data processing            7240 - Database activities            7250 - Maintenance and repair of office, accounting and computer machinery            7260 - Other computer related activities</p>
<p><b>Utilities</b></p>	<p>4011 - Production of electricity            4012 - Transmission of electricity            4013 - Distribution and trade in electricity            4021 - Manufacture of gas            4022 - Distribution and trade of gaseous fuels through mains            4030 - Steam and hot water supply            4100 - Collection, purification and distribution of water            9001 - Collection and treatment of sewage            9002 - Collection and treatment of other waste            9003 - Sanitation, remediation and other activities</p>

Region	All postcodes relating to the counties and islands listed below
Scotland	Aberdeenshire, Angus, Argyll, Ayrshire, Banffshire, Berwickshire, Caithness, Clackmannanshire, Dumfriesshire, Dunbartonshire, West Lothian, Fife, Invernesshire, Isle of Arran, Isle of Barra, Isle of Benbecula, Isle of Bute, Isle of Canna, Isle of Colonsay, Isle of Cumbrae, Isle of Eigg, Isle of Gigha, Isle of Harris, Isle of Islay, Isle of Jura, Isle of Lewis, Isle of Mull, Isle of North Uist, Isle of Rum, Isle of Scalpay, Isle of Skye, Isle of South Uist, Kincardineshire, Kinrossshire, Kirkcubrightshire, Lanarkshire, Midlothian, Morayshire, Nairnshire, Orkney, Peebleshire, Perthshire, Renfrewshire, Rossshire, Roxburghshire, Selkirkshire, Shetland Islands, Stirlingshire, Sutherland, West Lothian, Wigtownshire.
North East	Northumberland, Tyne & Wear, Durham, Cleveland.
North West	Cumbria, Lancashire, Greater Manchester, Merseyside, Isle of Man, Cheshire.
Yorkshire & Humberside	North Yorkshire, West Yorkshire, South Yorkshire, North Humberside, South Humberside.
Midlands	Derbyshire, Nottinghamshire, Northamptonshire, Leicestershire, Staffordshire, Shropshire, West Midlands, Warwickshire, Hereford & Worcester.
East of England	Lincolnshire, Cambridgeshire, Norfolk, Suffolk.
South East	Oxfordshire, Buckinghamshire, Bedfordshire, Hertfordshire, Essex, Berkshire, Surrey, Kent, East Sussex, West Sussex.
London	Greater London, Middlesex.
South West	Gloucestershire, Avon, Wiltshire, Hampshire, Dorset, Isle of Wight, Somerset, Devon, Cornwall, Isles of Scilly, Channel Islands.
Wales	Clwyd, Gwynedd, West Glamorgan, Mid Glamorgan, South Glamorgan, Gwent, Dyfed, Powys.
Northern Ireland	Derry, Tyrone, Fermanagh, Antrim, Armagh, Down