



Red Flag Alert statistics for the UK Regions

for

Second Quarter (April-June) 2013

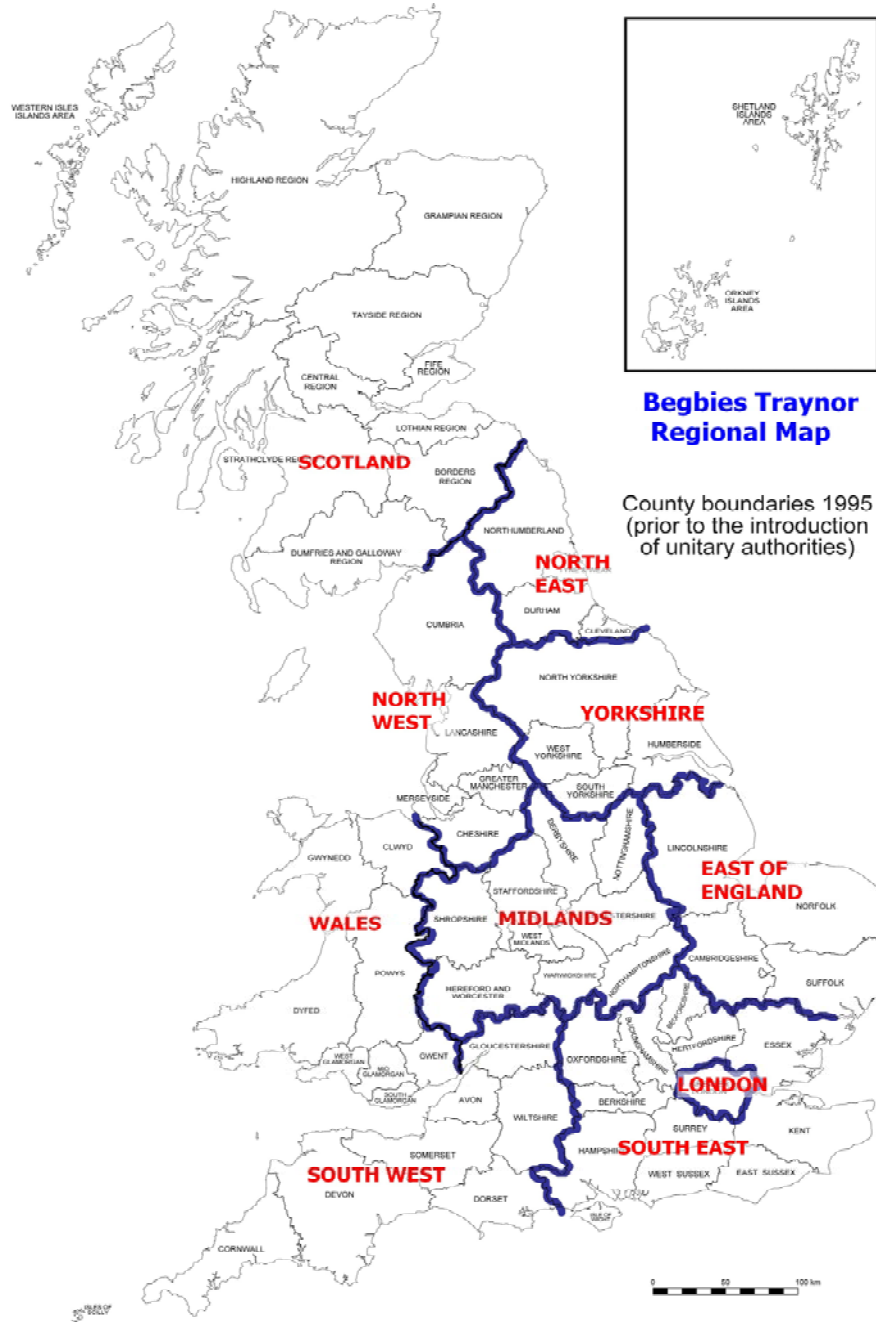
# Contents

## Regions:

	Pages
All Regions	1-3
Scotland	4-6
North East	7-9
North West	10-12
Yorkshire	13-15
Midlands	16-18
East of England	19-21
South East	22-24
London	25-27
South West	28-30
Wales	31-33
Northern Ireland	34-36

## Appendices:

SIC codes	37-43
Post Codes	44

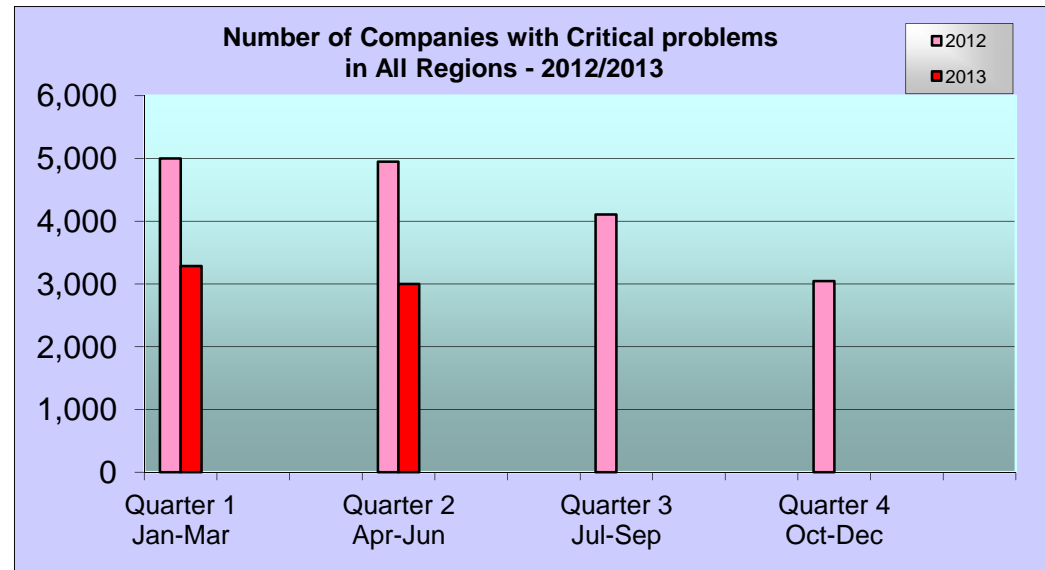


**Note:** The same company may have received more than one action during the period.

Code	Description
Critical problems	These are companies with CCJs totalling £5,000 or more and/or Winding-Up Petition or in a Voluntary Arrangement.

All Regions - Critical Problems 2012	
Quarter	No. of Companies
Quarter 1 Jan-Mar	5,000
Quarter 2 Apr-Jun	4,947
Quarter 3 Jul-Sep	4,107
Quarter 4 Oct-Dec	3,044

All Regions - Critical Problems 2013	
Quarter	No. of Companies
Quarter 1 Jan-Mar	3,283
Quarter 2 Apr-Jun	3,001
Quarter 3 Jul-Sep	
Quarter 4 Oct-Dec	



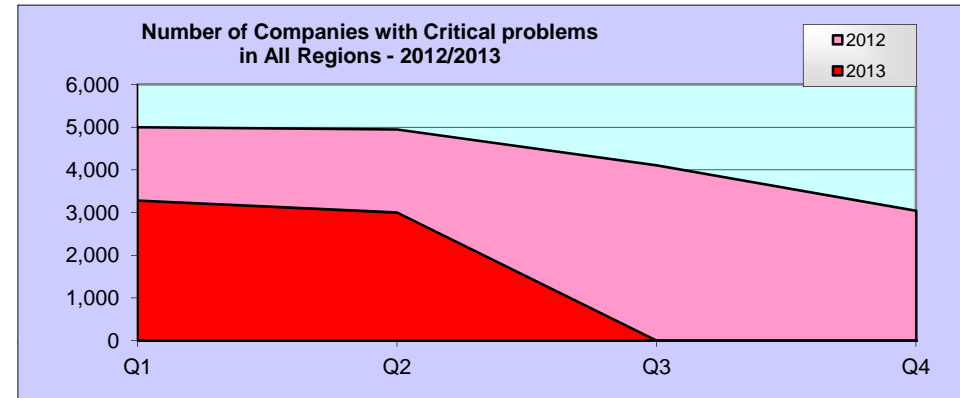
The information contained in this page is for your sole use and may not be passed on to any third party by you without the prior consent of Red Flag Alert LLP who assume no responsibility for the accuracy and correctness of such information and any opinions contained therein or for any consequences of you relying on it for any particular purposes.

**Note:** The same company may have received more than one action during the period.

Code	Description
Critical problems	These are companies with CCJs totalling £5,000 or more and/or Winding-Up Petition or in a Voluntary Arrangement.

**All Regions - Companies with Critical problems 2012/2013**

	Q1	Q2	Q3	Q4	Monthly Average	+/- %
2012	5,000	4,947	4,107	3,044	1,425	
2013	3,283	3,001			1,047	-26.5%

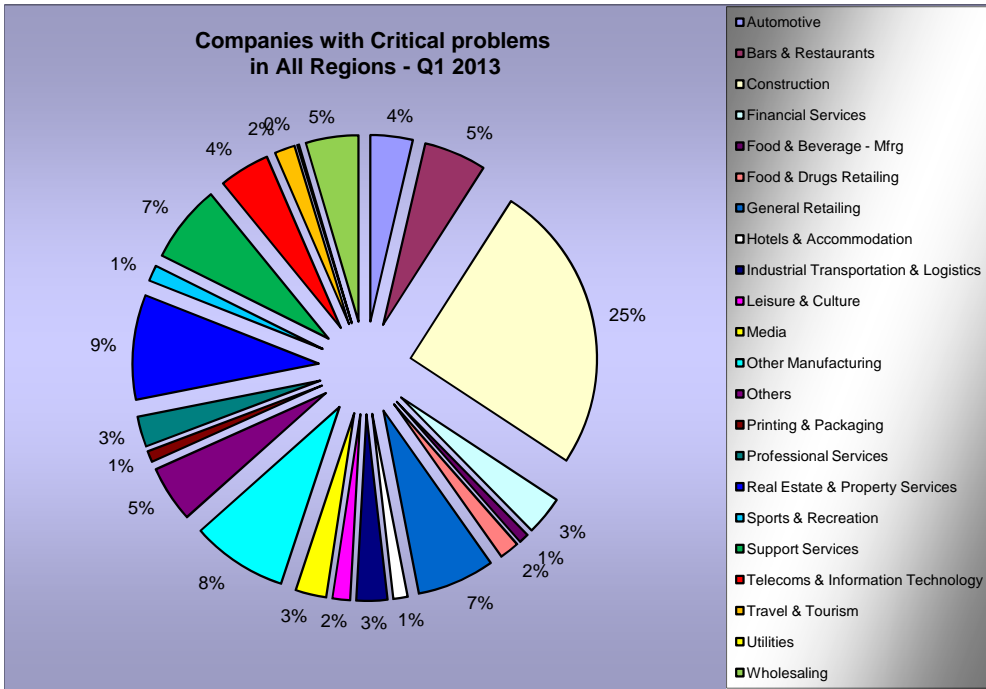


The information contained in this page is for your sole use and may not be passed on to any third party by you without the prior consent of Red Flag Alert LLP who assume no responsibility for the accuracy and correctness of such information and any opinions contained therein or for any consequences of you relying on it for any particular purposes.

**Note:** Industry Sectors - Companies are categorised by SIC classification per their details filed with Companies House.

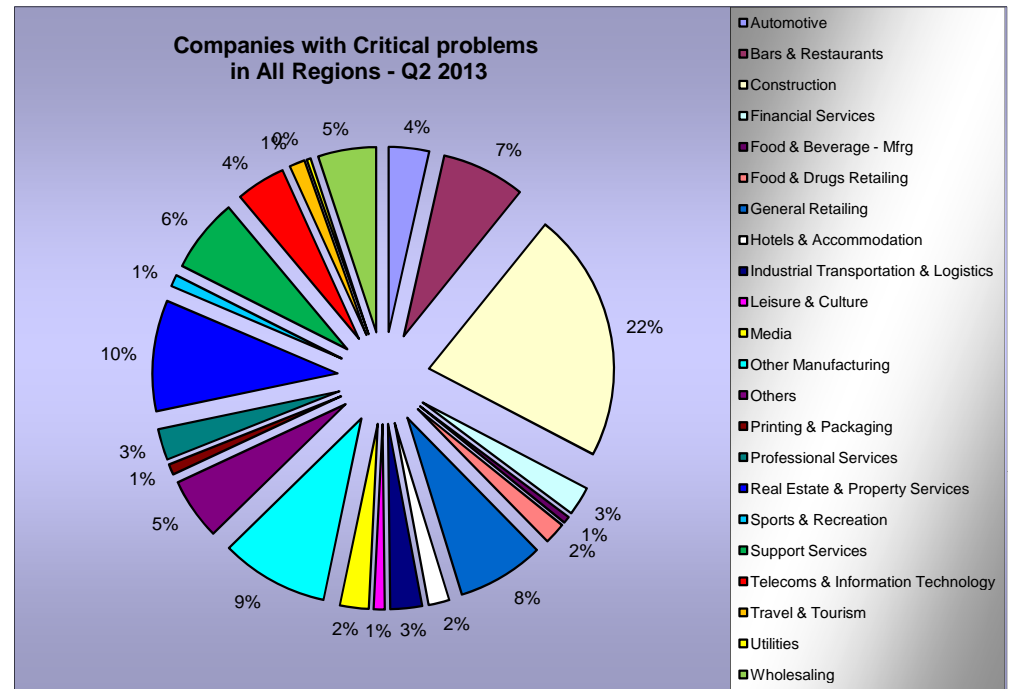
**All Regions**

**by Industry Sector - Companies with Critical problems - 1st Quarter 2013**



**All Regions**

**by Industry Sector - Companies with Critical problems - 2nd Quarter 2013**



The information contained in this page is for your sole use and may not be passed on to any third party by you without the prior consent of Red Flag Alert LLP who assume no responsibility for the accuracy and correctness of such information and any opinions contained therein or for any consequences of you relying on it for any particular purposes.

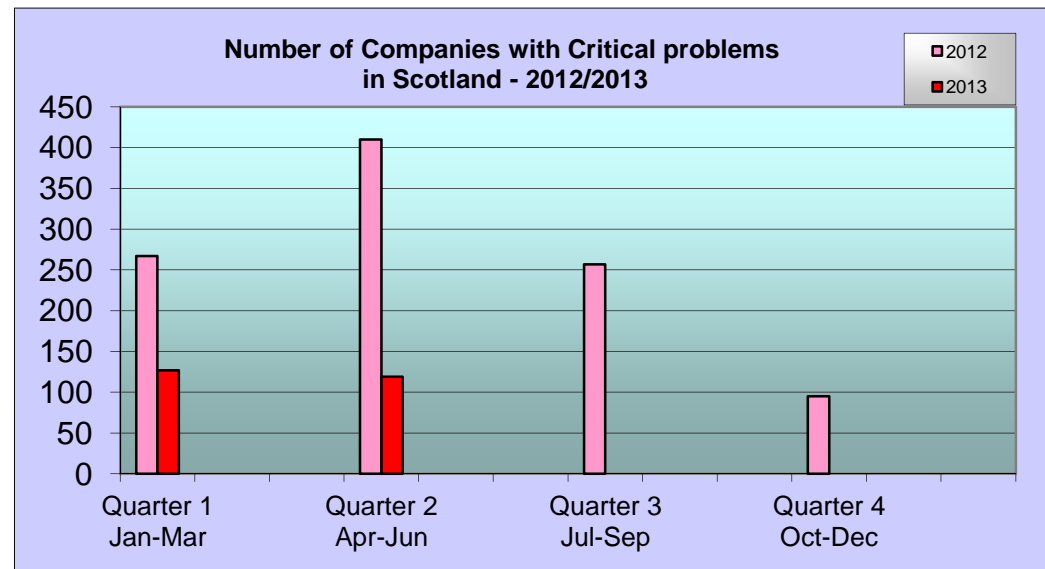


**Note:** The same company may have received more than one action during the period.

Code	Description
Critical problems	These are companies with CCJs totalling £5,000 or more and/or Winding-Up Petition or in a Voluntary Arrangement.

Scotland - Critical Problems 2012	
Quarter	No. of Companies
Quarter 1 Jan-Mar	267
Quarter 2 Apr-Jun	410
Quarter 3 Jul-Sep	257
Quarter 4 Oct-Dec	95

Scotland - Critical Problems 2013	
Quarter	No. of Companies
Quarter 1 Jan-Mar	127
Quarter 2 Apr-Jun	119
Quarter 3 Jul-Sep	
Quarter 4 Oct-Dec	



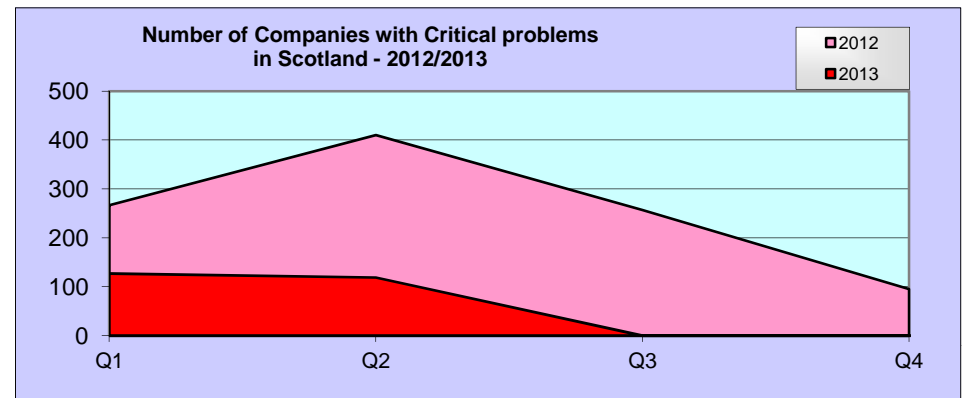
The information contained in this page is for your sole use and may not be passed on to any third party by you without the prior consent of Red Flag Alert LLP who assume no responsibility for the accuracy and correctness of such information and any opinions contained therein or for any consequences of you relying on it for any particular purposes.

**Note:** The same company may have received more than one action during the period.

Code	Description
Critical problems	These are companies with CCJs totalling £5,000 or more and/or Winding-Up Petition or in a Voluntary Arrangement.

### Scotland - Companies with Critical problems 2012/2013

	Q1	Q2	Q3	Q4	Monthly Average	+/- %
2012	267	410	257	95	86	
2013	127	119			41	-52.2%

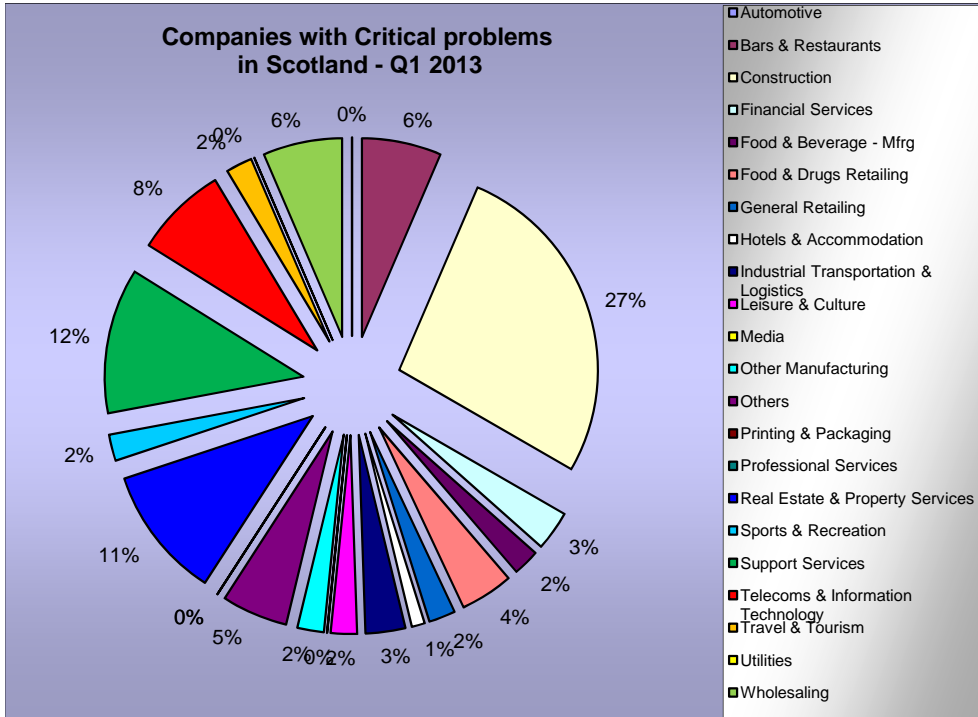


The information contained in this page is for your sole use and may not be passed on to any third party by you without the prior consent of Red Flag Alert LLP who assume no responsibility for the accuracy and correctness of such information and any opinions contained therein or for any consequences of you relying on it for any particular purposes.

**Note:** Industry Sectors - Companies are categorised by SIC classification per their details filed with Companies House.

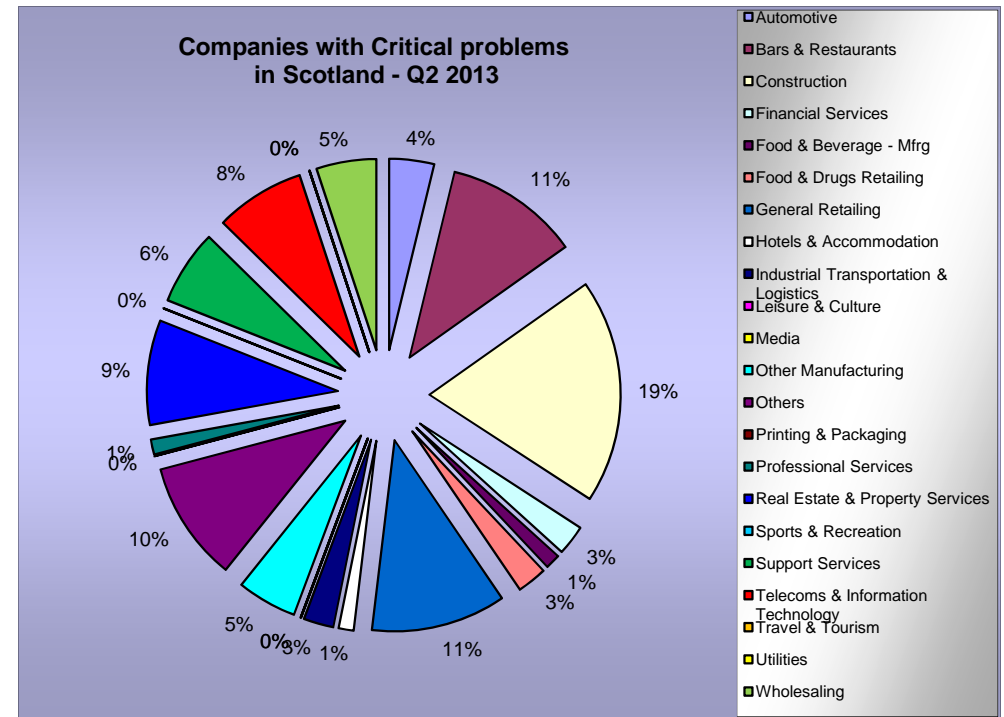
**Scotland**

**- by Industry Sector - Companies with Critical problems - 1st Quarter 2013**



**Scotland**

**- by Industry Sector - Companies with Critical problems - 2nd Quarter 2013**



The information contained in this page is for your sole use and may not be passed on to any third party by you without the prior consent of Red Flag Alert LLP who assume no responsibility for the accuracy and correctness of such information and any opinions contained therein or for any consequences of you relying on it for any particular purposes.



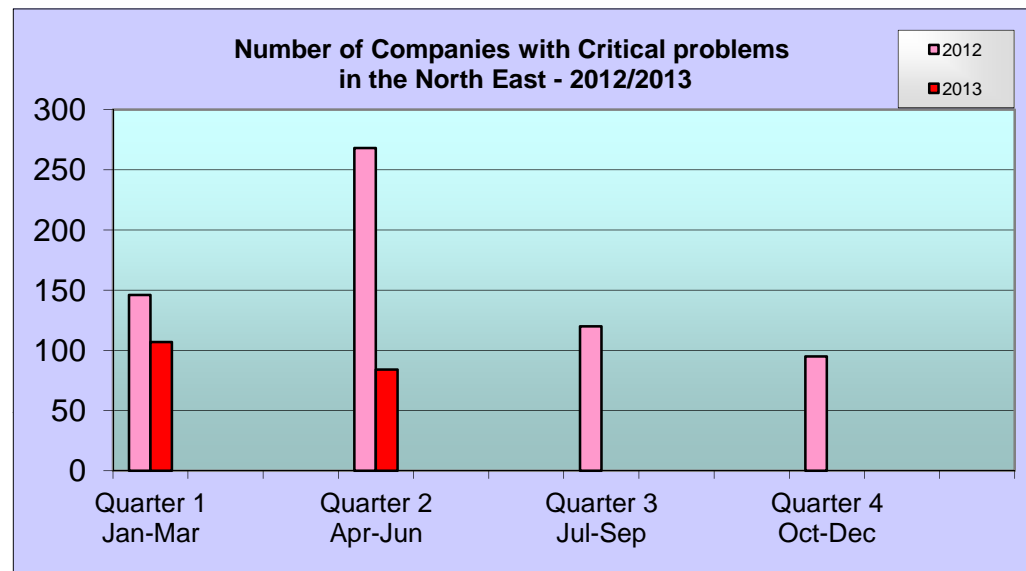


**Note:** The same company may have received more than one action during the period.

Code	Description
Critical problems	These are companies with CCJs totalling £5,000 or more and/or Winding-Up Petition or in a Voluntary Arrangement.

North East - Critical Problems 2012	
Quarter	No. of Companies
Quarter 1 Jan-Mar	146
Quarter 2 Apr-Jun	268
Quarter 3 Jul-Sep	120
Quarter 4 Oct-Dec	95

North East - Critical Problems 2013	
Quarter	No. of Companies
Quarter 1 Jan-Mar	107
Quarter 2 Apr-Jun	84
Quarter 3 Jul-Sep	
Quarter 4 Oct-Dec	



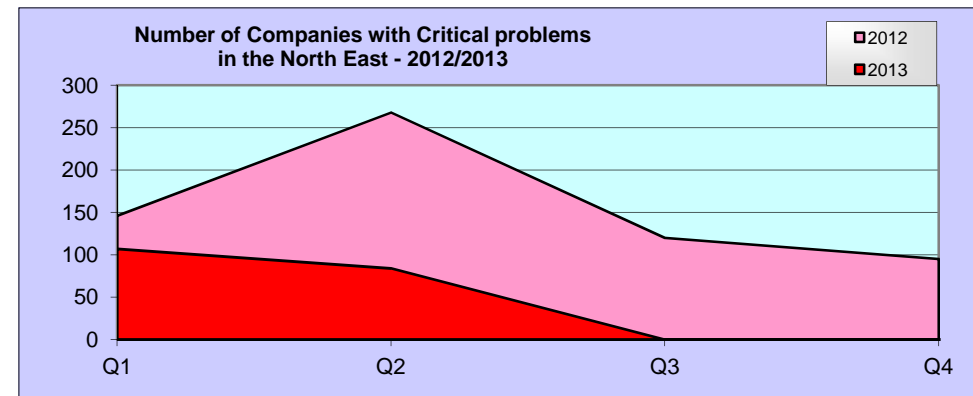
The information contained in this page is for your sole use and may not be passed on to any third party by you without the prior consent of Red Flag Alert LLP who assume no responsibility for the accuracy and correctness of such information and any opinions contained therein or for any consequences of you relying on it for any particular purposes.

**Note:** The same company may have received more than one action during the period.

Code	Description
Critical problems	These are companies with CCJs totalling £5,000 or more and/or Winding-Up Petition or in a Voluntary Arrangement.

### North East - Companies with Critical problems 2012/2013

	Q1	Q2	Q3	Q4	Monthly Average	+/- %
2012	146	268	120	95	52	
2013	107	84			32	-39.3%

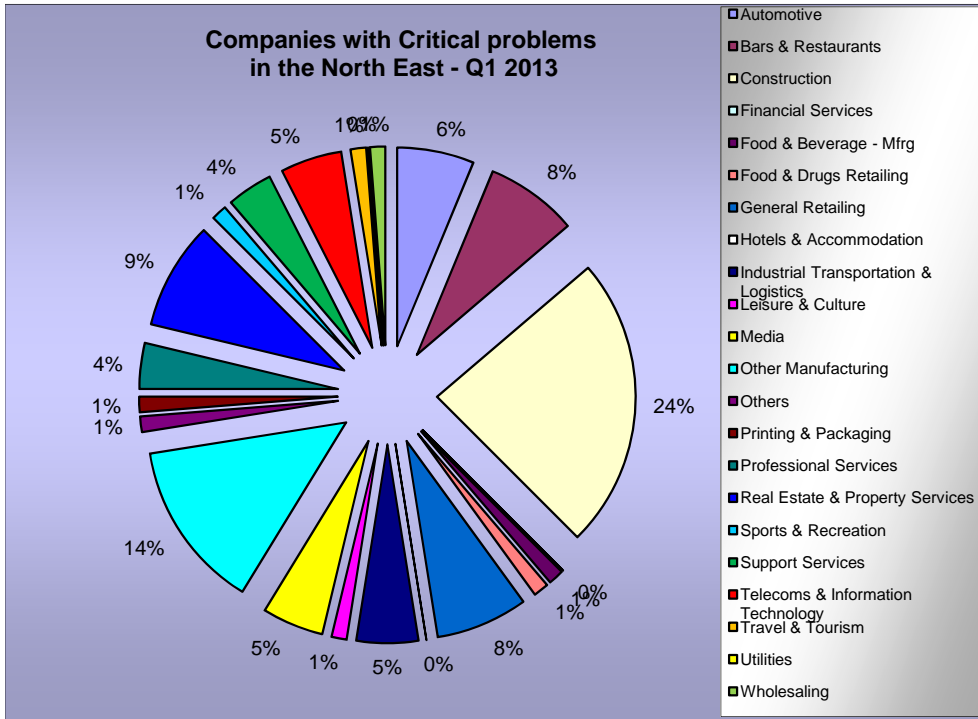


The information contained in this page is for your sole use and may not be passed on to any third party by you without the prior consent of Red Flag Alert LLP who assume no responsibility for the accuracy and correctness of such information and any opinions contained therein or for any consequences of you relying on it for any particular purposes.

**Note:** Industry Sectors - Companies are categorised by SIC classification per their details filed with Companies House.

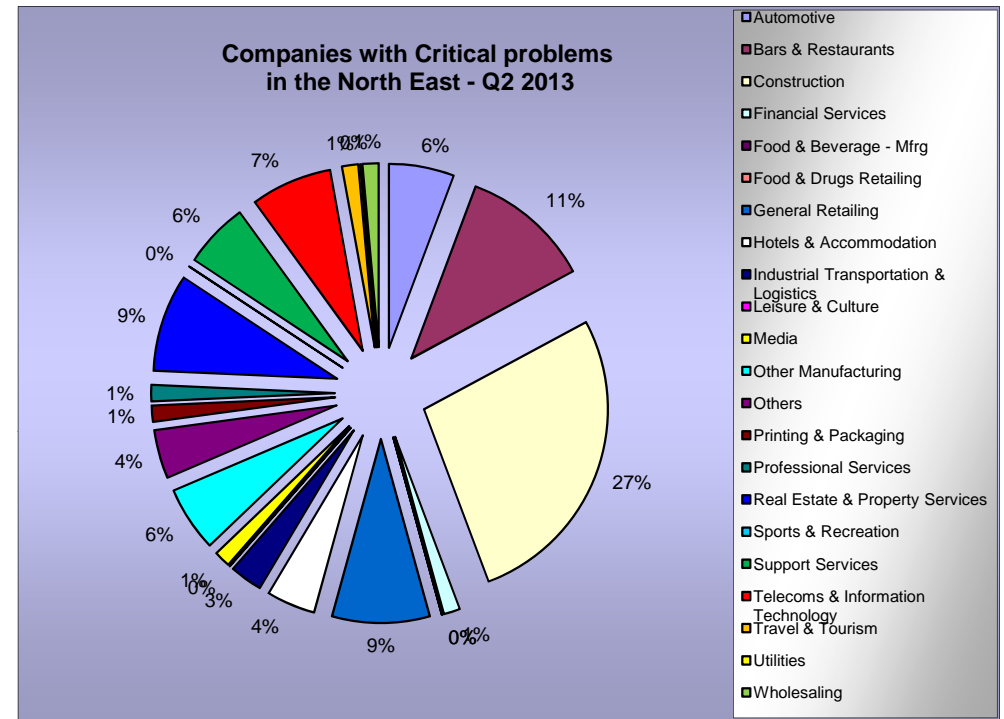
**North East**

**- by Industry Sector - Companies with Critical problems - 1st Quarter 2013**



**North East**

**- by Industry Sector - Companies with Critical problems - 2nd Quarter 2013**



The information contained in this page is for your sole use and may not be passed on to any third party by you without the prior consent of Red Flag Alert LLP who assume no responsibility for the accuracy and correctness of such information and any opinions contained therein or for any consequences of you relying on it for any particular purposes.

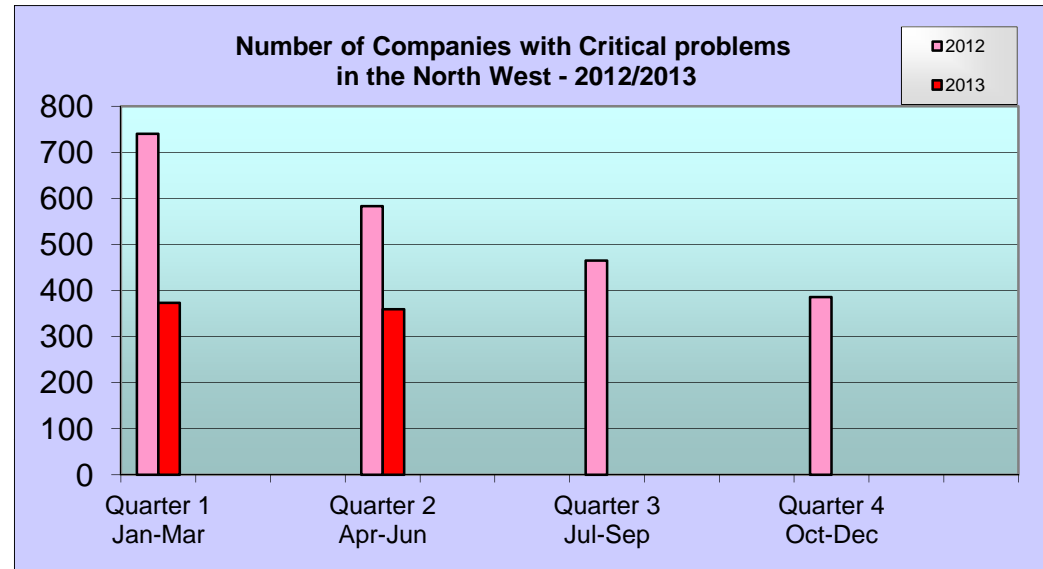


**Note:** The same company may have received more than one action during the period.

Code	Description
Critical problems	These are companies with CCJs totalling £5,000 or more and/or Winding-Up Petition or in a Voluntary Arrangement.

North West - Critical Problems 2012	
Quarter	No. of Companies
Quarter 1 Jan-Mar	740
Quarter 2 Apr-Jun	583
Quarter 3 Jul-Sep	465
Quarter 4 Oct-Dec	386

North West - Critical Problems 2013	
Quarter	No. of Companies
Quarter 1 Jan-Mar	373
Quarter 2 Apr-Jun	359
Quarter 3 Jul-Sep	
Quarter 4 Oct-Dec	



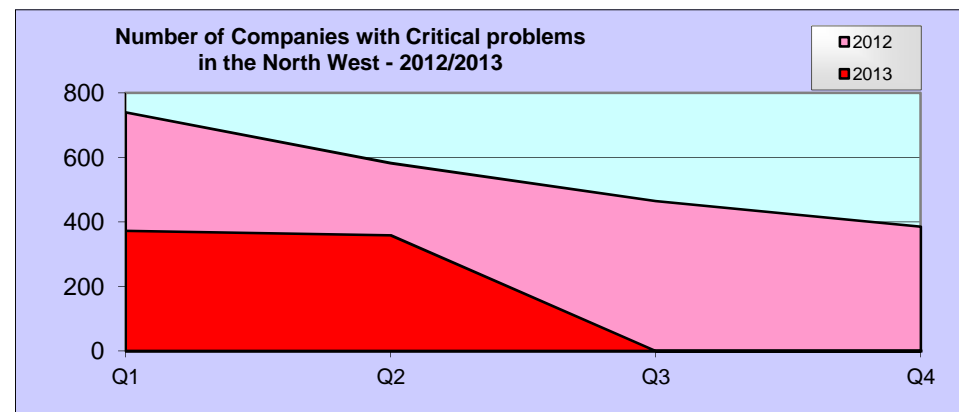
The information contained in this page is for your sole use and may not be passed on to any third party by you without the prior consent of Red Flag Alert LLP who assume no responsibility for the accuracy and correctness of such information and any opinions contained therein or for any consequences of you relying on it for any particular purposes.

**Note:** The same company may have received more than one action during the period.

Code	Description
Critical problems	These are companies with CCJs totalling £5,000 or more and/or Winding-Up Petition or in a Voluntary Arrangement.

**North West - Companies with Critical problems 2012/2013**

	Q1	Q2	Q3	Q4	Monthly Average	+/- %
2012	740	583	465	386	181	
2013	373	359			122	-32.7%

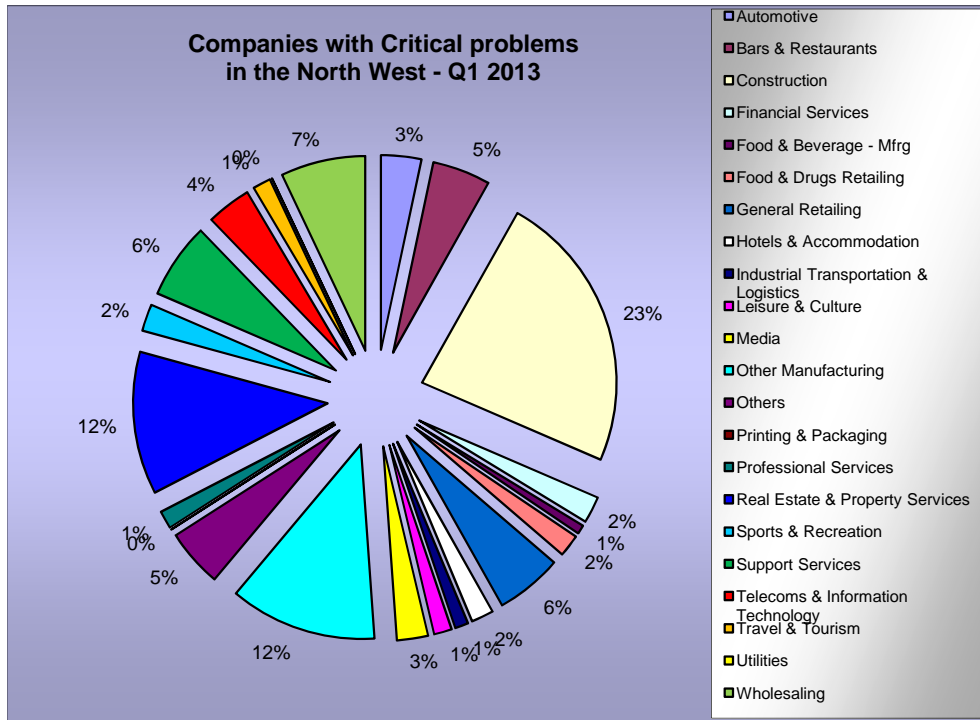


The information contained in this page is for your sole use and may not be passed on to any third party by you without the prior consent of Red Flag Alert LLP who assume no responsibility for the accuracy and correctness of such information and any opinions contained therein or for any consequences of you relying on it for any particular purposes.

**Note:** Industry Sectors - Companies are categorised by SIC classification per their details filed with Companies House.

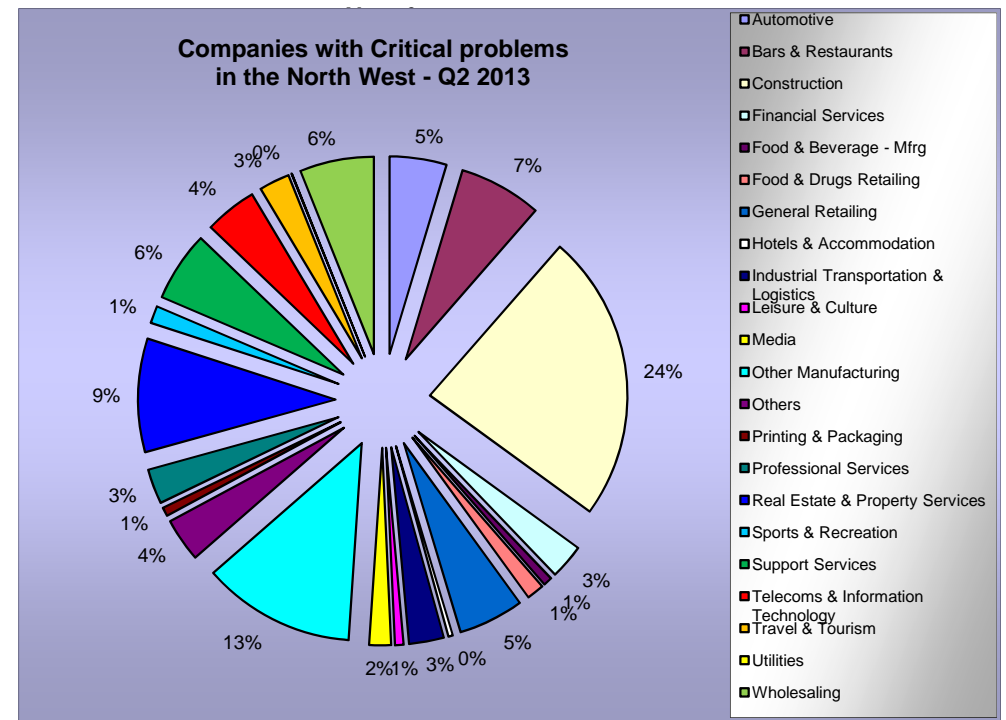
**North West**

**- by Industry Sector - Companies with Critical problems - 1st Quarter 2013**



**North West**

**- by Industry Sector - Companies with Critical problems - 2nd Quarter 2013**



The information contained in this page is for your sole use and may not be passed on to any third party by you without the prior consent of Red Flag Alert LLP who assume no responsibility for the accuracy and correctness of such information and any opinions contained therein or for any consequences of you relying on it for any particular purposes.

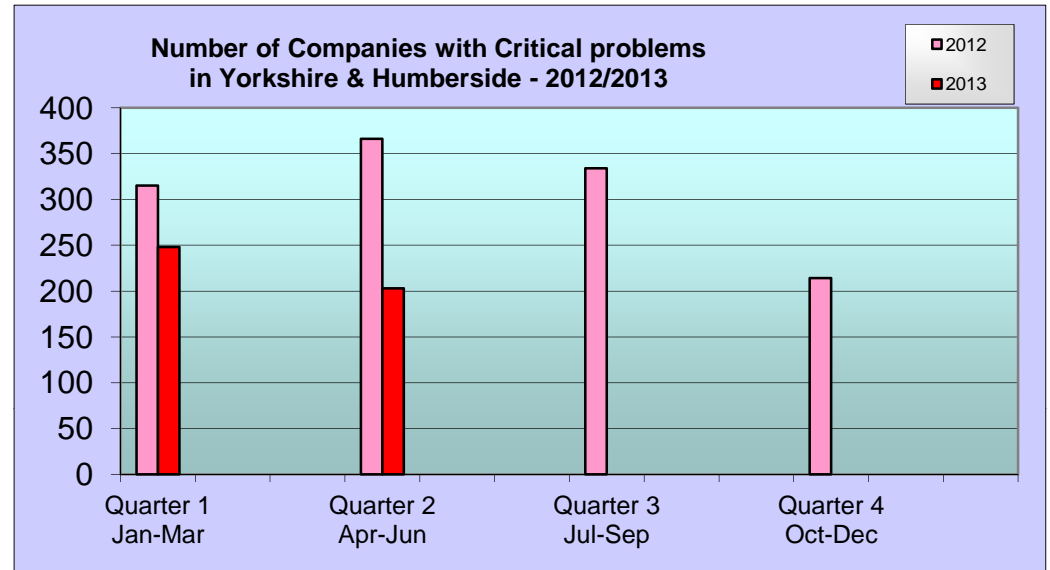


**Note:** The same company may have received more than one action during the period.

Code	Description
Critical problems	These are companies with CCJs totalling £5,000 or more and/or Winding-Up Petition or in a Voluntary Arrangement.

Yorks/Humberside - Critical Problems 2012	
Quarter	No. of Companies
Quarter 1 Jan-Mar	315
Quarter 2 Apr-Jun	366
Quarter 3 Jul-Sep	334
Quarter 4 Oct-Dec	214

Yorks/Humberside - Critical Problems 2013	
Quarter	No. of Companies
Quarter 1 Jan-Mar	248
Quarter 2 Apr-Jun	203
Quarter 3 Jul-Sep	
Quarter 4 Oct-Dec	



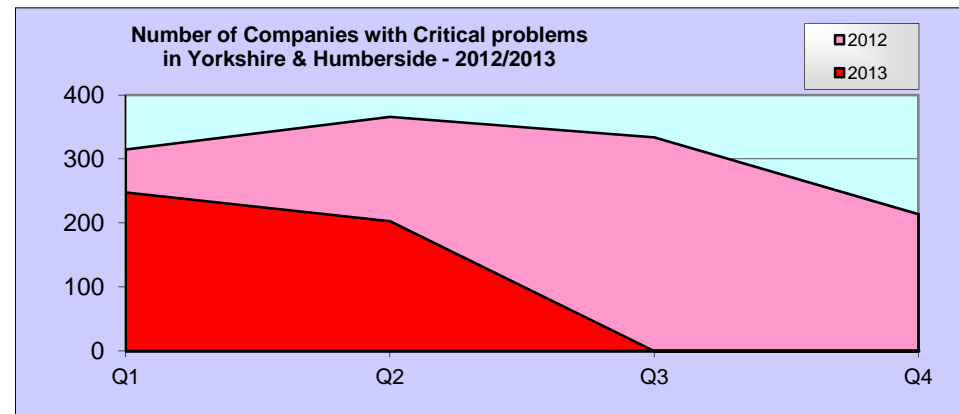
The information contained in this page is for your sole use and may not be passed on to any third party by you without the prior consent of Red Flag Alert LLP who assume no responsibility for the accuracy and correctness of such information and any opinions contained therein or for any consequences of you relying on it for any particular purposes.

**Note:** The same company may have received more than one action during the period.

Code	Description
Critical problems	These are companies with CCJs totalling £5,000 or more and/or Winding-Up Petition or in a Voluntary Arrangement.

### Yorks/Humberside - Companies with Critical problems 2012/2013

	Q1	Q2	Q3	Q4	Monthly Average	+/- %
2012	315	366	334	214	102	
2013	248	203			75	-26.6%

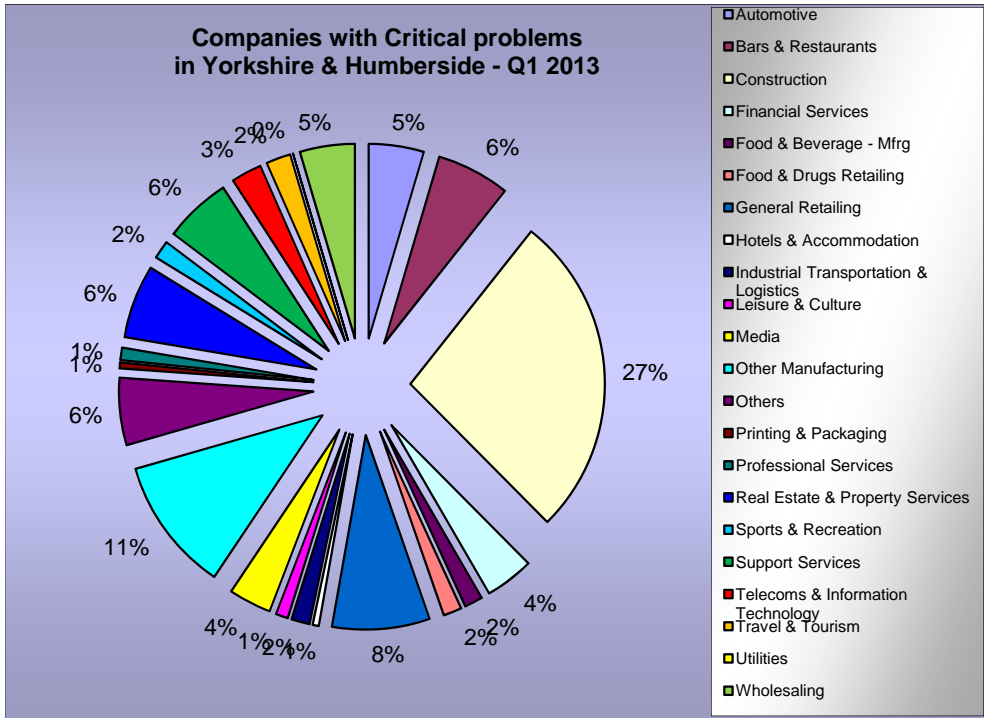


The information contained in this page is for your sole use and may not be passed on to any third party by you without the prior consent of Red Flag Alert LLP who assume no responsibility for the accuracy and correctness of such information and any opinions contained therein or for any consequences of you relying on it for any particular purposes.

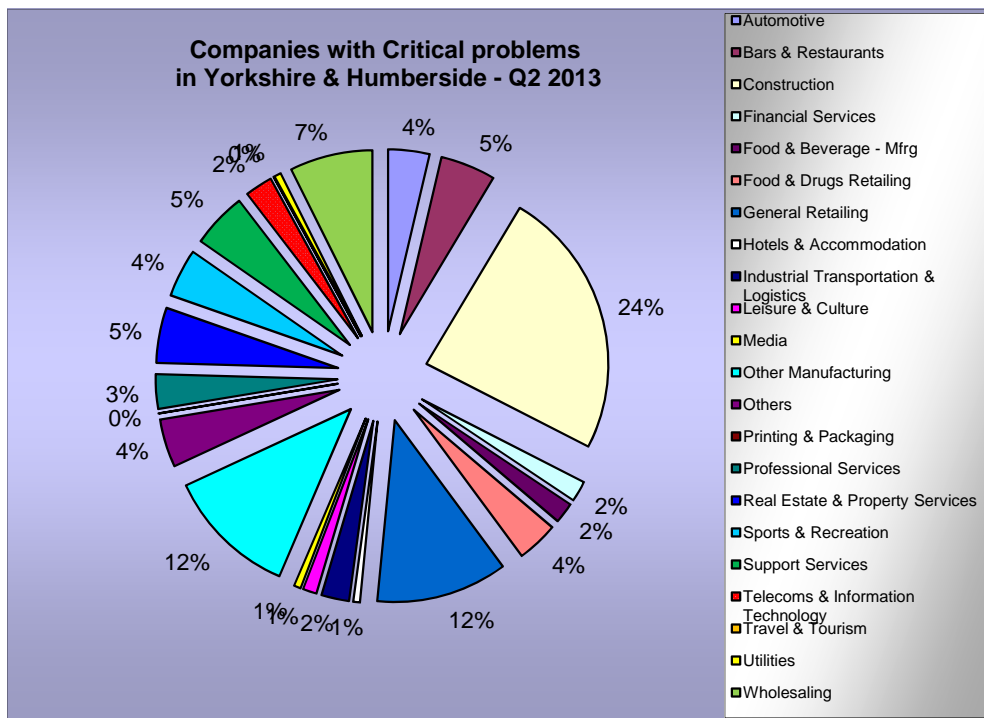


**Note:** Industry Sectors - Companies are categorised by SIC classification per their details filed with Companies House.

**Yorkshire & Humberside**  
**- by Industry Sector - Companies with Critical problems - 1st Quarter 2013**



**Yorkshire & Humberside**  
**- by Industry Sector - Companies with Critical problems - 2nd Quarter 2013**



The information contained in this page is for your sole use and may not be passed on to any third party by you without the prior consent of Red Flag Alert LLP who assume no responsibility for the accuracy and correctness of such information and any opinions contained therein or for any consequences of you relying on it for any particular purposes.

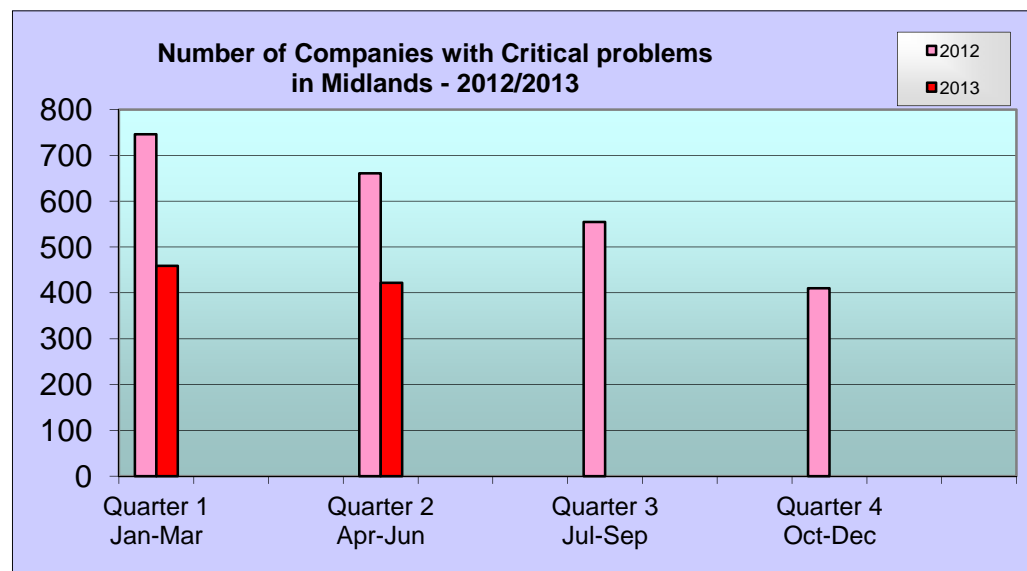


**Note:** The same company may have received more than one action during the period.

Code	Description
Critical problems	These are companies with CCJs totalling £5,000 or more and/or Winding-Up Petition or in a Voluntary Arrangement.

Midlands - Critical Problems 2012	
Quarter	No. of Companies
Quarter 1 Jan-Mar	746
Quarter 2 Apr-Jun	661
Quarter 3 Jul-Sep	555
Quarter 4 Oct-Dec	410

Midlands - Critical Problems 2013	
Quarter	No. of Companies
Quarter 1 Jan-Mar	459
Quarter 2 Apr-Jun	422
Quarter 3 Jul-Sep	
Quarter 4 Oct-Dec	



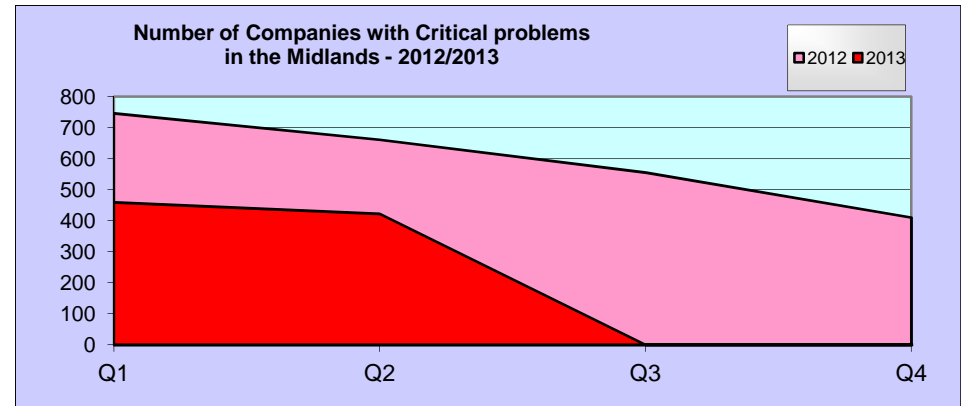
The information contained in this page is for your sole use and may not be passed on to any third party by you without the prior consent of Red Flag Alert LLP who assume no responsibility for the accuracy and correctness of such information and any opinions contained therein or for any consequences of you relying on it for any particular purposes.

**Note:** The same company may have received more than one action during the period.

Code	Description
Critical problems	These are companies with CCJs totalling £5,000 or more and/or Winding-Up Petition or in a Voluntary Arrangement.

### Midlands - Companies with Critical problems 2012/2013

	Q1	Q2	Q3	Q4	Monthly Average	+/- %
2012	746	661	555	410	198	
2013	459	422			147	-25.7%

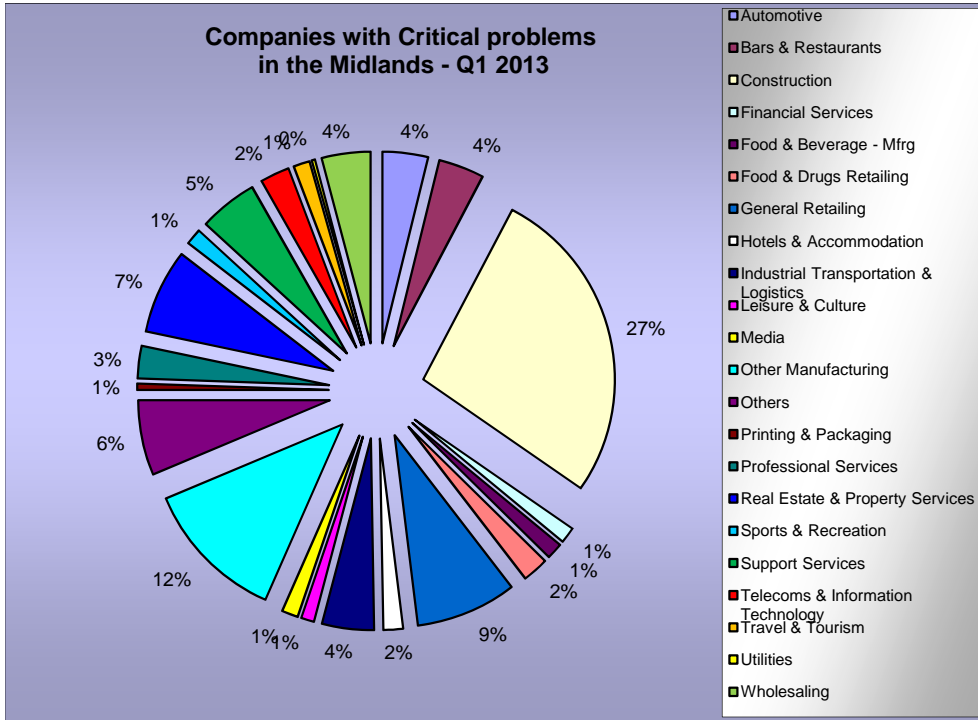


The information contained in this page is for your sole use and may not be passed on to any third party by you without the prior consent of Red Flag Alert LLP who assume no responsibility for the accuracy and correctness of such information and any opinions contained therein or for any consequences of you relying on it for any particular purposes.

**Note:** Industry Sectors - Companies are categorised by SIC classification per their details filed with Companies House.

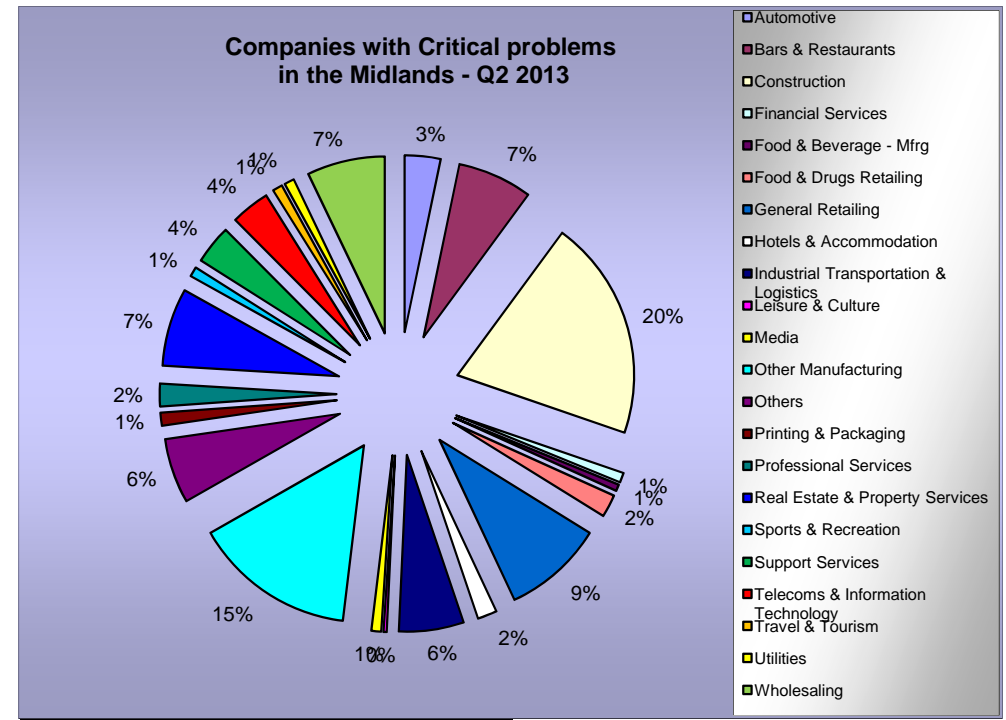
**Midlands**

**- by Industry Sector - Companies with Critical problems - 1st Quarter 2013**



**Midlands**

**- by Industry Sector - Companies with Critical problems - 2nd Quarter 2013**



The information contained in this page is for your sole use and may not be passed on to any third party by you without the prior consent of Red Flag Alert LLP who assume no responsibility for the accuracy and correctness of such information and any opinions contained therein or for any consequences of you relying on it for any particular purposes.

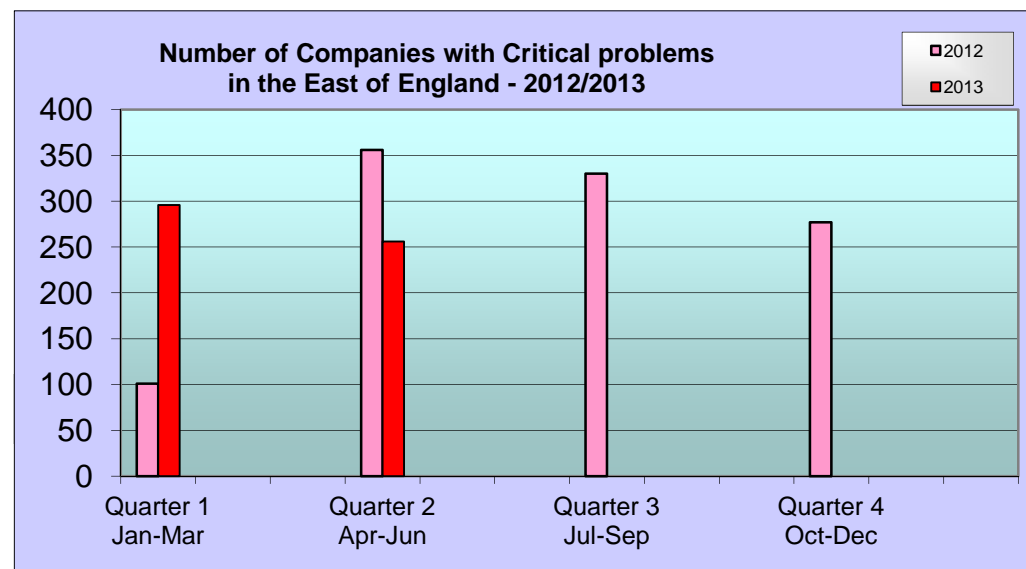


**Note:** The same company may have received more than one action during the period.

Code	Description
Critical problems	These are companies with CCJs totalling £5,000 or more and/or Winding-Up Petition or in a Voluntary Arrangement.

East of England - Critical Problems 2012	
Quarter	No. of Companies
Quarter 1 Jan-Mar	101
Quarter 2 Apr-Jun	356
Quarter 3 Jul-Sep	330
Quarter 4 Oct-Dec	277

East of England - Critical Problems 2013	
Quarter	No. of Companies
Quarter 1 Jan-Mar	296
Quarter 2 Apr-Jun	256
Quarter 3 Jul-Sep	
Quarter 4 Oct-Dec	



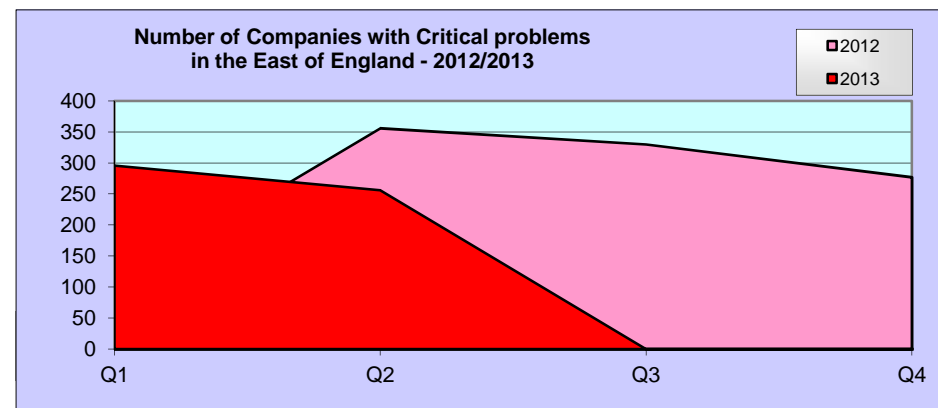
The information contained in this page is for your sole use and may not be passed on to any third party by you without the prior consent of Red Flag Alert LLP who assume no responsibility for the accuracy and correctness of such information and any opinions contained therein or for any consequences of you relying on it for any particular purposes.

**Note:** The same company may have received more than one action during the period.

Code	Description
Critical problems	These are companies with CCJs totalling £5,000 or more and/or Winding-Up Petition or in a Voluntary Arrangement.

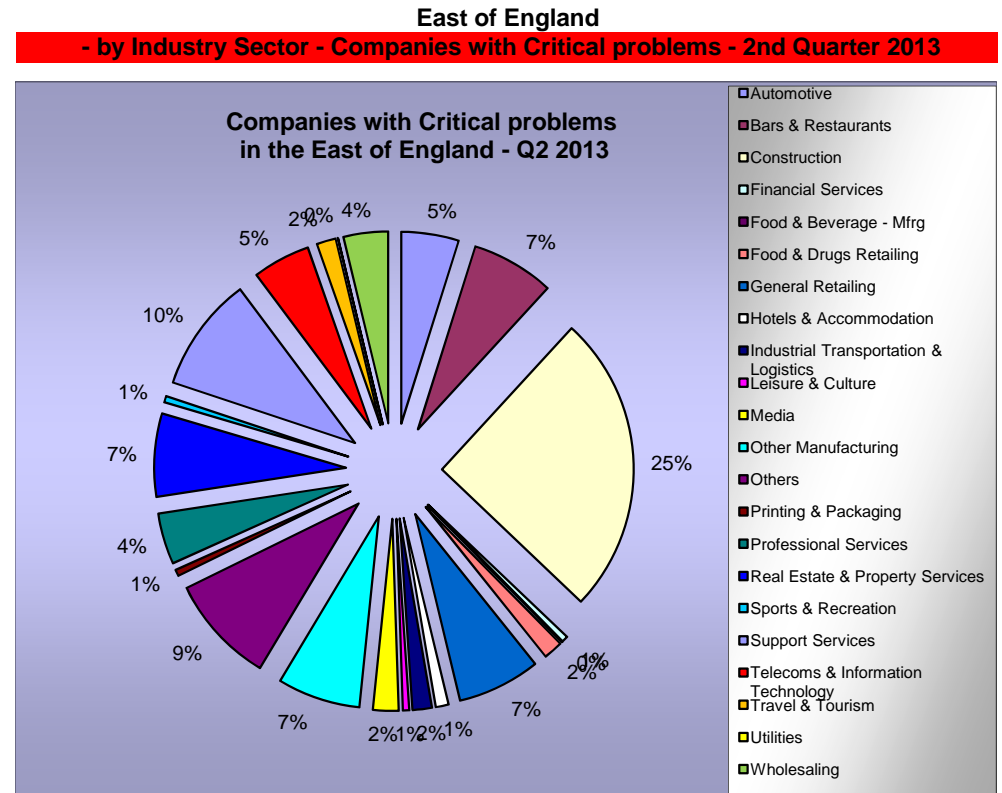
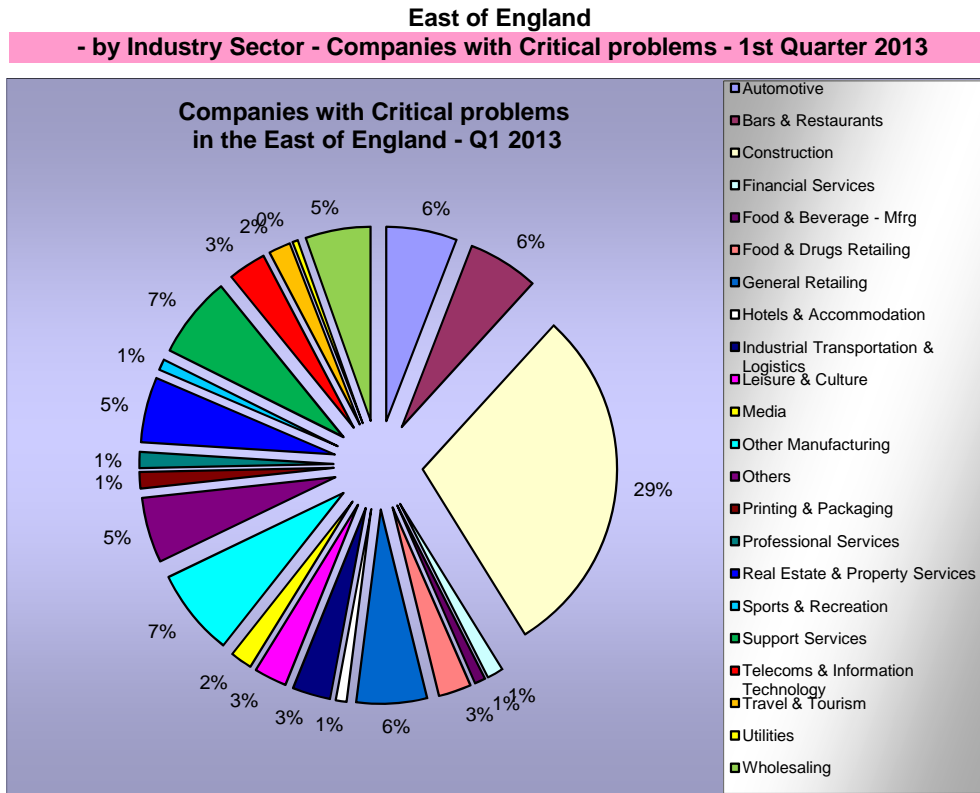
### East of England - Companies with Critical problems 2012/2013

	Q1	Q2	Q3	Q4	Monthly Average	+/- %
2012	101	356	330	277	89	
2013	296	256			92	3.8%



The information contained in this page is for your sole use and may not be passed on to any third party by you without the prior consent of Red Flag Alert LLP who assume no responsibility for the accuracy and correctness of such information and any opinions contained therein or for any consequences of you relying on it for any particular purposes.

**Note:** Industry Sectors - Companies are categorised by SIC classification per their details filed with Companies House.



The information contained in this page is for your sole use and may not be passed on to any third party by you without the prior consent of Red Flag Alert LLP who assume no responsibility for the accuracy and correctness of such information and any opinions contained therein or for any consequences of you relying on it for any particular purposes.

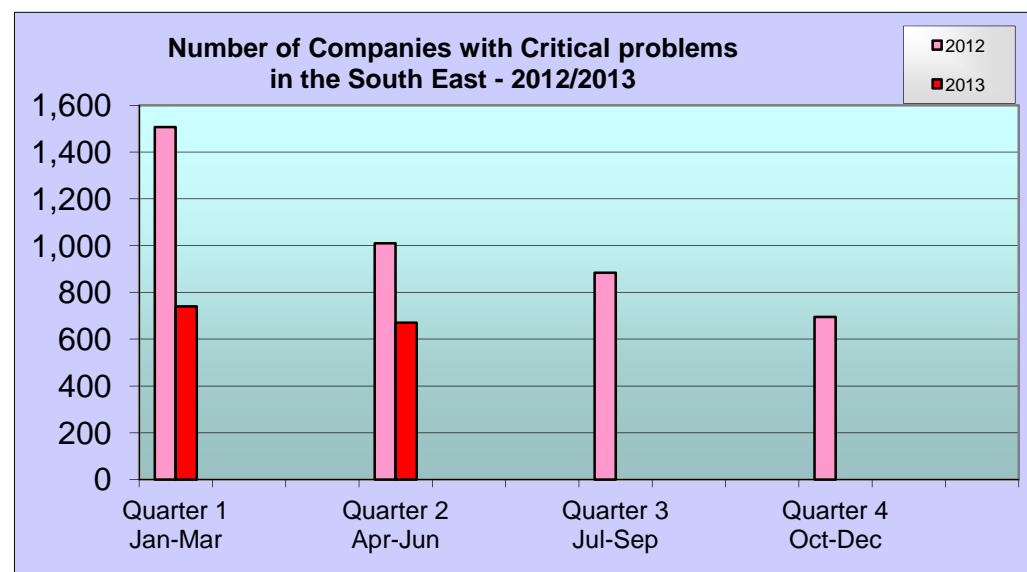


**Note:** The same company may have received more than one action during the period.

Code	Description
Critical problems	These are companies with CCJs totalling £5,000 or more and/or Winding-Up Petition or in a Voluntary Arrangement.

South East - Critical Problems 2012	
Quarter	No. of Companies
Quarter 1 Jan-Mar	1,507
Quarter 2 Apr-Jun	1,010
Quarter 3 Jul-Sep	884
Quarter 4 Oct-Dec	695

South East - Critical Problems 2013	
Quarter	No. of Companies
Quarter 1 Jan-Mar	740
Quarter 2 Apr-Jun	670
Quarter 3 Jul-Sep	
Quarter 4 Oct-Dec	



The information contained in this page is for your sole use and may not be passed on to any third party by you without the prior consent of Red Flag Alert LLP who assume no responsibility for the accuracy and correctness of such information and any opinions contained therein or for any consequences of you relying on it for any particular purposes.

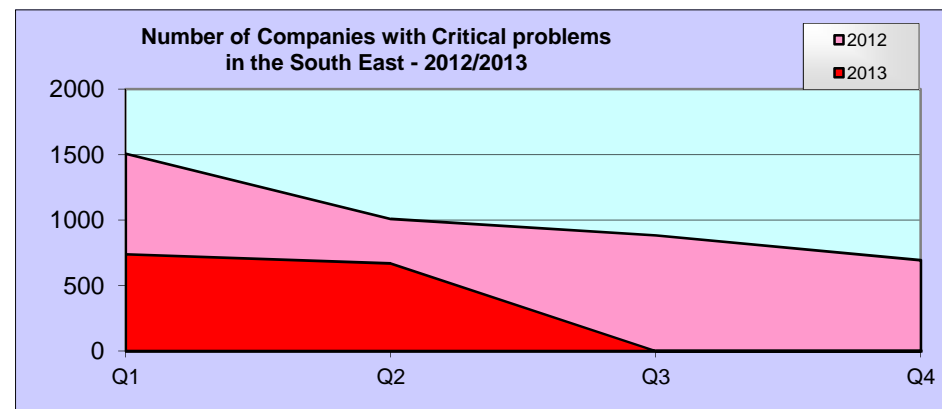


**Note:** The same company may have received more than one action during the period.

Code	Description
Critical problems	These are companies with CCJs totalling £5,000 or more and/or Winding-Up Petition or in a Voluntary Arrangement.

### South East - Companies with Critical problems 2012/2013

	Q1	Q2	Q3	Q4	Monthly Average	+/- %
2012	1507	1,010	884	695	341	
2013	740	670			235	-31.2%

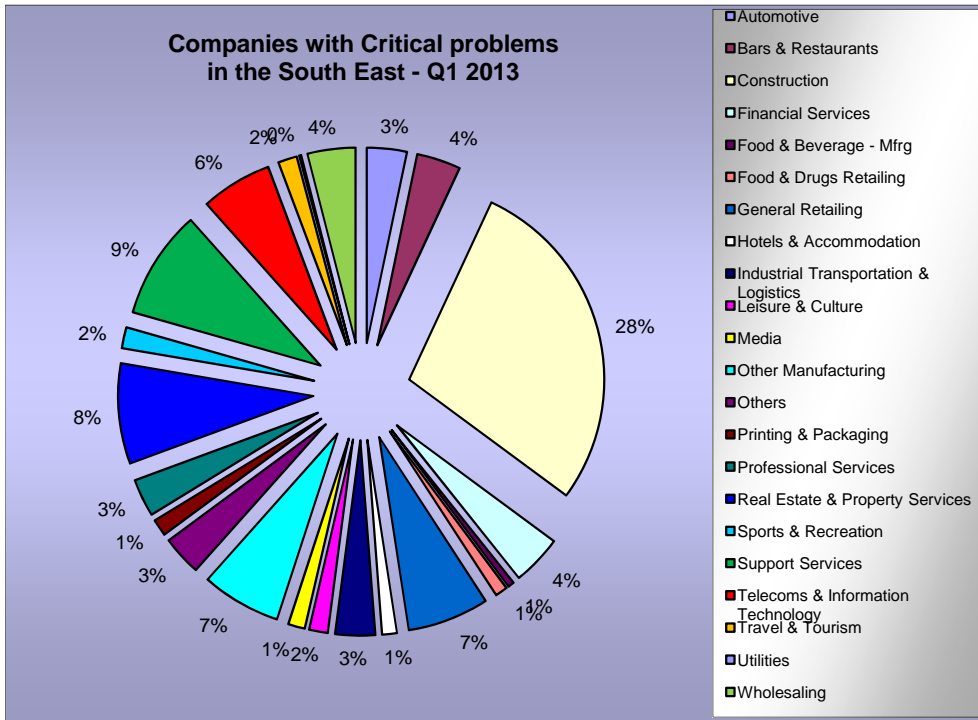


The information contained in this page is for your sole use and may not be passed on to any third party by you without the prior consent of Red Flag Alert LLP who assume no responsibility for the accuracy and correctness of such information and any opinions contained therein or for any consequences of you relying on it for any particular purposes.

**Note:** Industry Sectors - Companies are categorised by SIC classification per their details filed with Companies House.

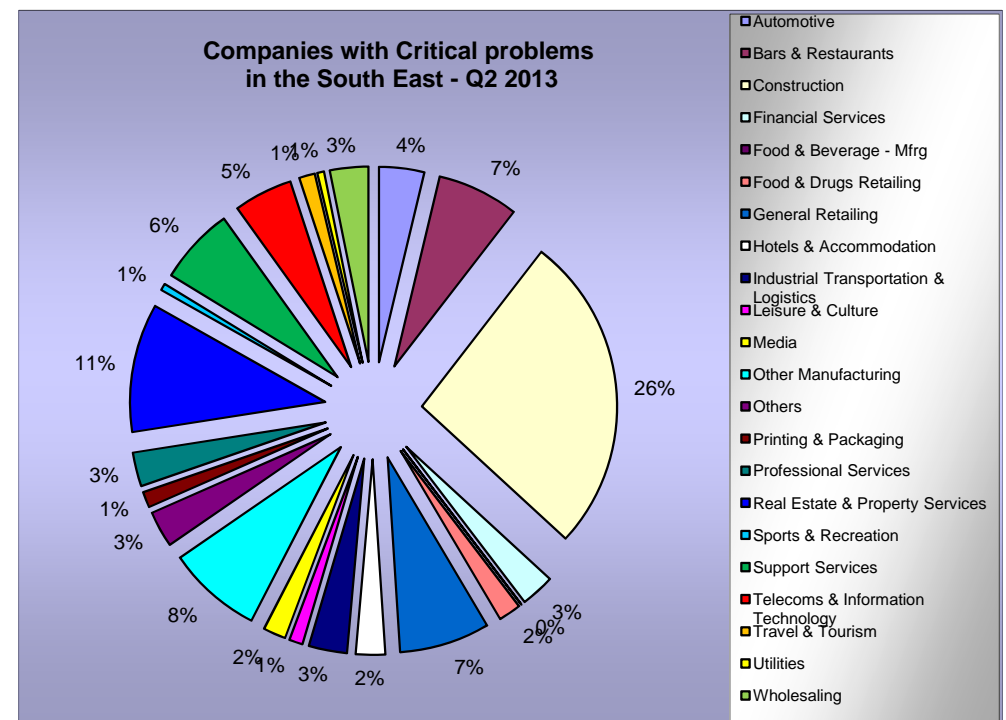
**South East**

**- by Industry Sector - Companies with Critical problems - 1st Quarter 2013**



**South East**

**- by Industry Sector - Companies with Critical problems - 2nd Quarter 2013**



The information contained in this page is for your sole use and may not be passed on to any third party by you without the prior consent of Red Flag Alert LLP who assume no responsibility for the accuracy and correctness of such information and any opinions contained therein or for any consequences of you relying on it for any particular purposes.

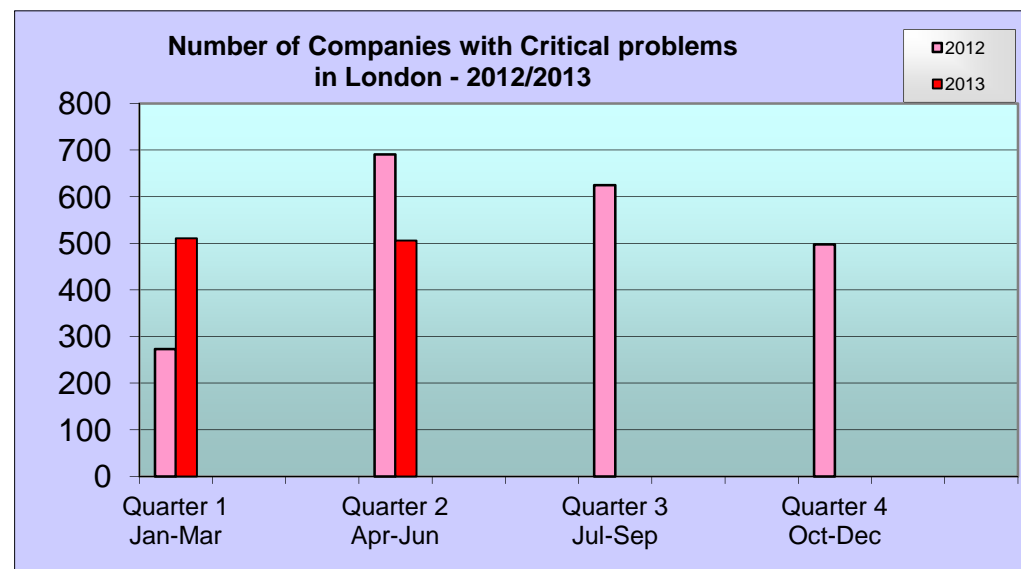


**Note:** The same company may have received more than one action during the period.

Code	Description
Critical problems	These are companies with CCJs totalling £5,000 or more and/or Winding-Up Petition or in a Voluntary Arrangement.

London - Critical Problems 2012	
Quarter	No. of Companies
Quarter 1 Jan-Mar	273
Quarter 2 Apr-Jun	691
Quarter 3 Jul-Sep	625
Quarter 4 Oct-Dec	498

London - Critical Problems 2013	
Quarter	No. of Companies
Quarter 1 Jan-Mar	511
Quarter 2 Apr-Jun	506
Quarter 3 Jul-Sep	
Quarter 4 Oct-Dec	



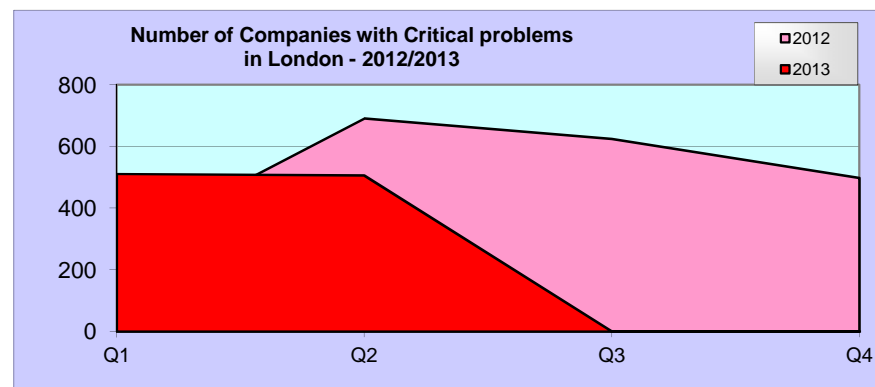
The information contained in this page is for your sole use and may not be passed on to any third party by you without the prior consent of Red Flag Alert LLP who assume no responsibility for the accuracy and correctness of such information and any opinions contained therein or for any consequences of you relying on it for any particular purposes.

**Note:** The same company may have received more than one action during the period.

Code	Description
Critical problems	These are companies with CCJs totalling £5,000 or more and/or Winding-Up Petition or in a Voluntary Arrangement.

### London - Companies with Critical problems 2012/2013

	Q1	Q2	Q3	Q4	Monthly Average	+/- %
2012	273	691	625	498	174	
2013	511	506			170	-2.5%

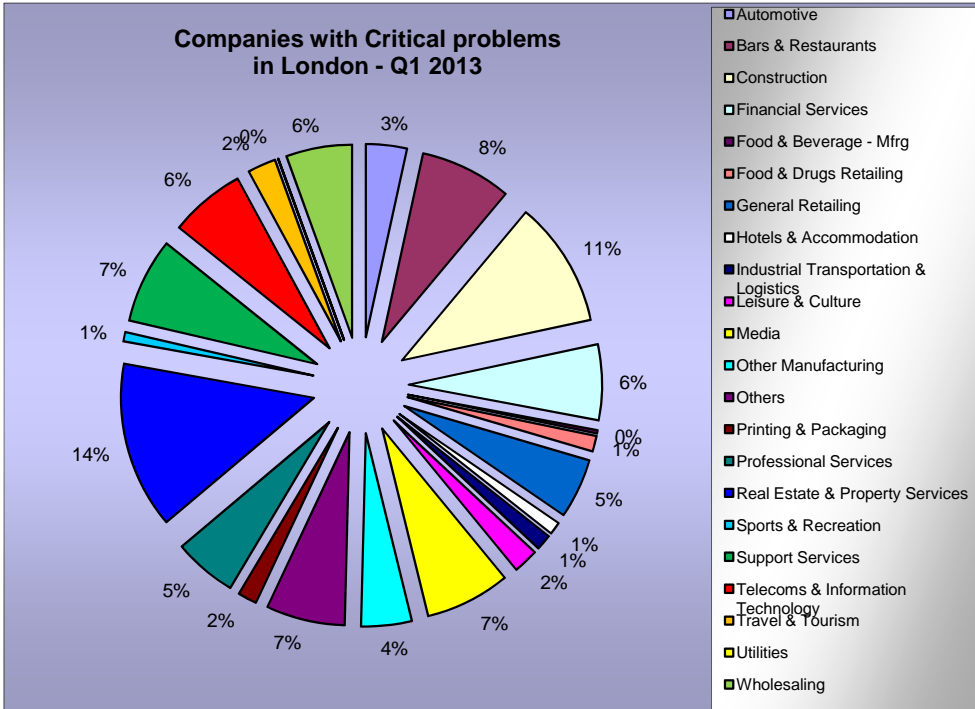


The information contained in this page is for your sole use and may not be passed on to any third party by you without the prior consent of Red Flag Alert LLP who assume no responsibility for the accuracy and correctness of such information and any opinions contained therein or for any consequences of you relying on it for any particular purposes.

**Note:** Industry Sectors - Companies are categorised by SIC classification per their details filed with Companies House.

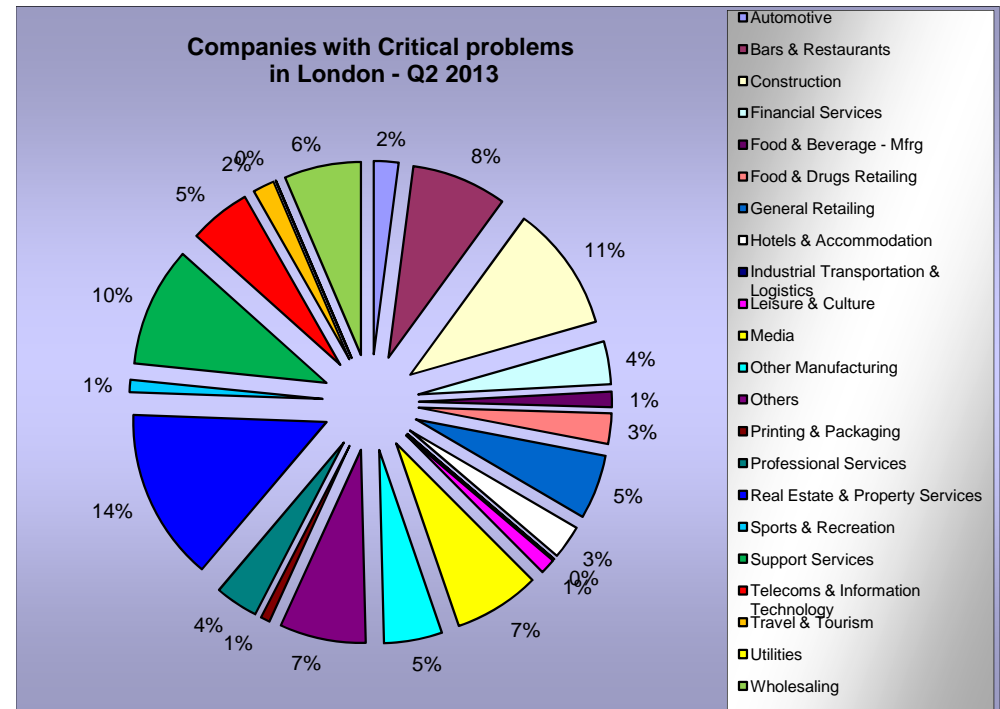
**London**

**- by Industry Sector - Companies with Critical problems - 1st Quarter 2013**



**London**

**- by Industry Sector - Companies with Critical problems - 2nd Quarter 2013**



The information contained in this page is for your sole use and may not be passed on to any third party by you without the prior consent of Red Flag Alert LLP who assume no responsibility for the accuracy and correctness of such information and any opinions contained therein or for any consequences of you relying on it for any particular purposes.

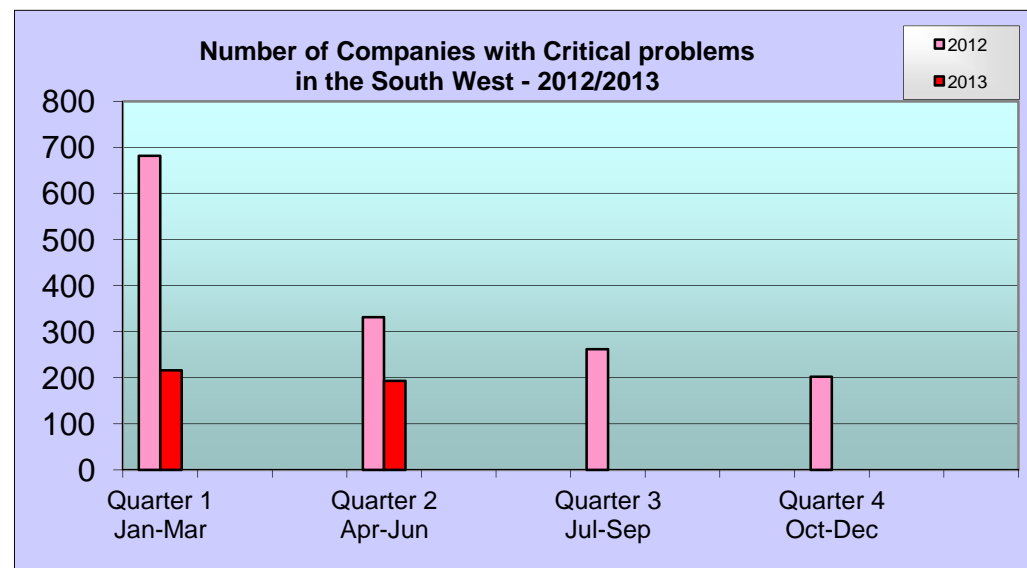


**Note:** The same company may have received more than one action during the period.

Code	Description
Critical problems	These are companies with CCJs totalling £5,000 or more and/or Winding-Up Petition or in a Voluntary Arrangement.

South West - Critical Problems 2012	
Quarter	No. of Companies
Quarter 1 Jan-Mar	682
Quarter 2 Apr-Jun	331
Quarter 3 Jul-Sep	262
Quarter 4 Oct-Dec	202

South West - Critical Problems 2013	
Quarter	No. of Companies
Quarter 1 Jan-Mar	216
Quarter 2 Apr-Jun	193
Quarter 3 Jul-Sep	
Quarter 4 Oct-Dec	



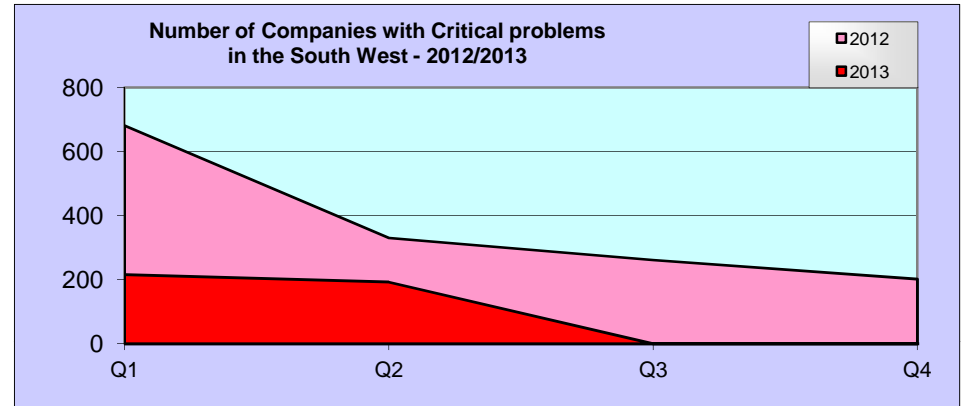
The information contained in this page is for your sole use and may not be passed on to any third party by you without the prior consent of Red Flag Alert LLP who assume no responsibility for the accuracy and correctness of such information and any opinions contained therein or for any consequences of you relying on it for any particular purposes.

**Note:** The same company may have received more than one action during the period.

Code	Description
Critical problems	These are companies with CCJs totalling £5,000 or more and/or Winding-Up Petition or in a Voluntary Arrangement.

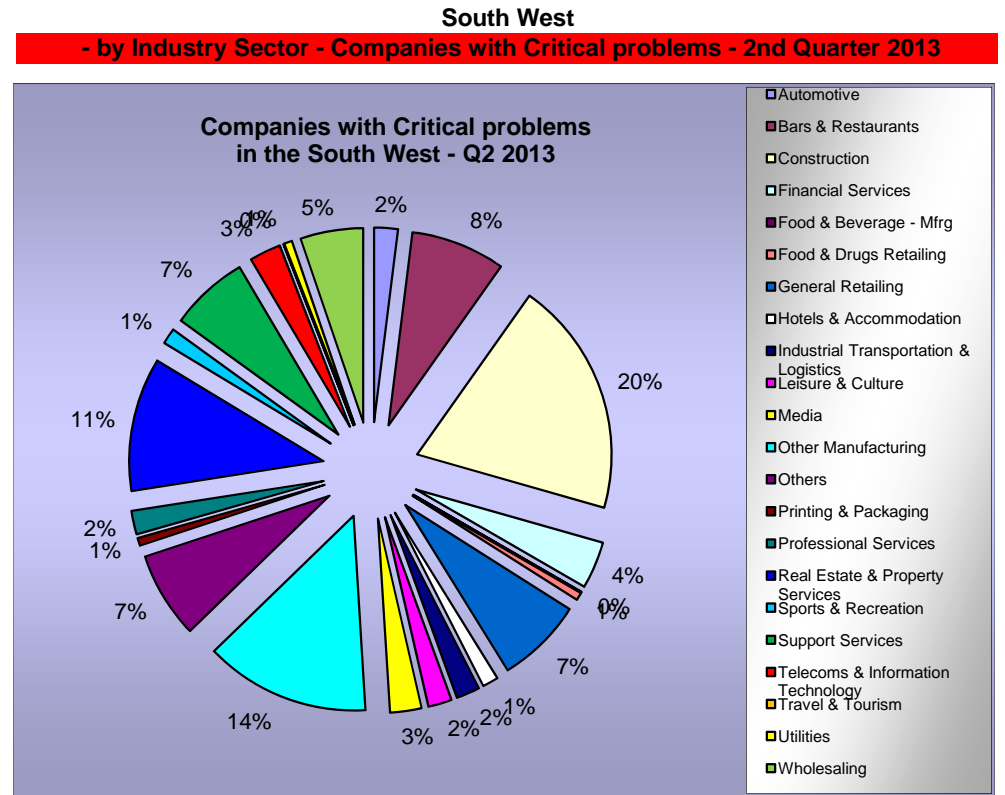
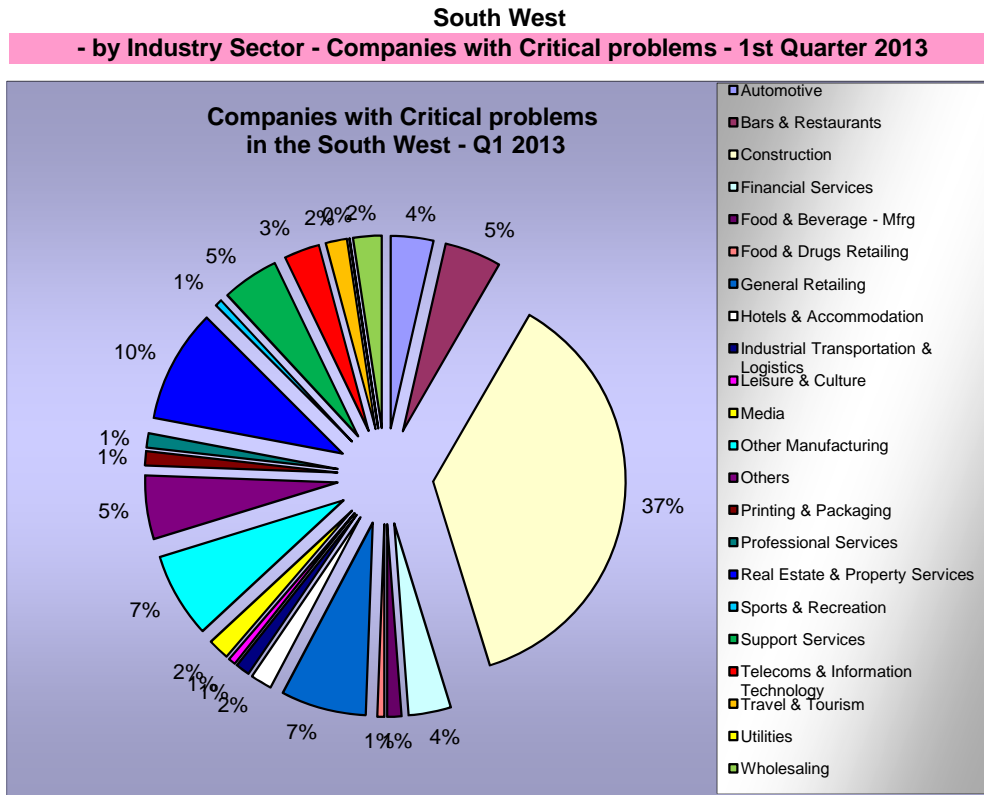
### South West - Companies with Critical problems 2012/2013

	Q1	Q2	Q3	Q4	Monthly Average	+/- %
2012	682	331	262	202	123	
2013	216	193			68	-44.6%



The information contained in this page is for your sole use and may not be passed on to any third party by you without the prior consent of Red Flag Alert LLP who assume no responsibility for the accuracy and correctness of such information and any opinions contained therein or for any consequences of you relying on it for any particular purposes.

**Note:** Industry Sectors - Companies are categorised by SIC classification per their details filed with Companies House.



The information contained in this page is for your sole use and may not be passed on to any third party by you without the prior consent of Red Flag Alert LLP who assume no responsibility for the accuracy and correctness of such information and any opinions contained therein or for any consequences of you relying on it for any particular purposes.



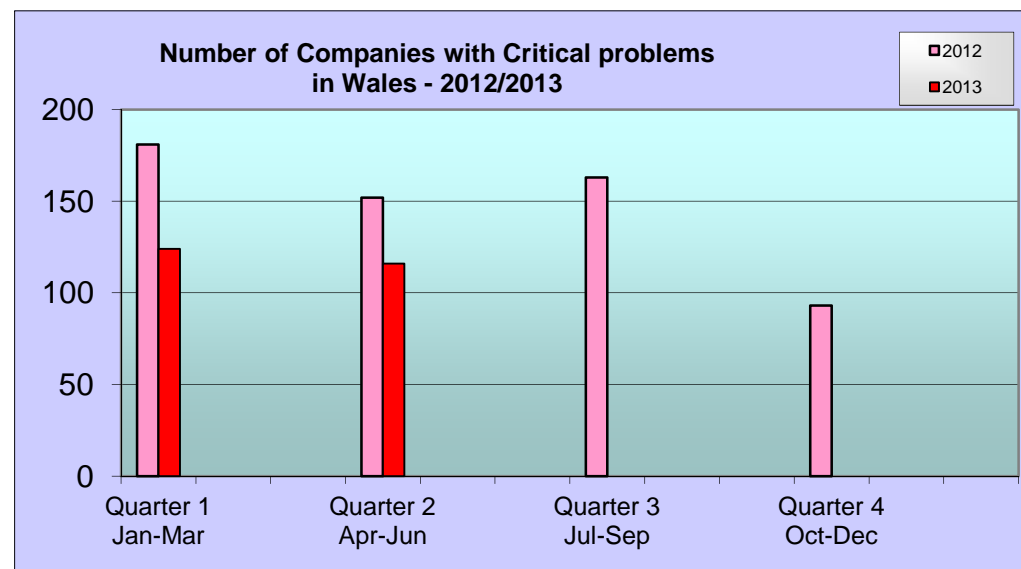


**Note:** The same company may have received more than one action during the period.

Code	Description
Critical problems	These are companies with CCJs totalling £5,000 or more and/or Winding-Up Petition or in a Voluntary Arrangement.

Wales - Critical Problems 2012	
Quarter	No. of Companies
Quarter 1 Jan-Mar	181
Quarter 2 Apr-Jun	152
Quarter 3 Jul-Sep	163
Quarter 4 Oct-Dec	93

Wales - Critical Problems 2013	
Quarter	No. of Companies
Quarter 1 Jan-Mar	124
Quarter 2 Apr-Jun	116
Quarter 3 Jul-Sep	
Quarter 4 Oct-Dec	



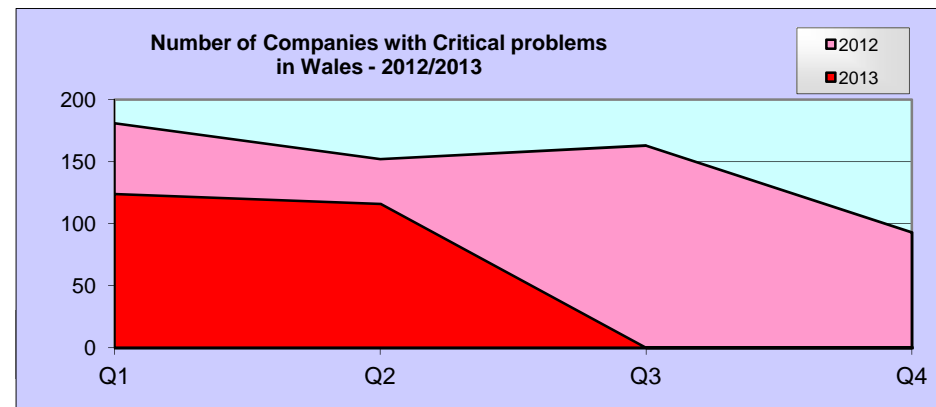
The information contained in this page is for your sole use and may not be passed on to any third party by you without the prior consent of Red Flag Alert LLP who assume no responsibility for the accuracy and correctness of such information and any opinions contained therein or for any consequences of you relying on it for any particular purposes.

**Note:** The same company may have received more than one action during the period.

Code	Description
Critical problems	These are companies with CCJs totalling £5,000 or more and/or Winding-Up Petition or in a Voluntary Arrangement.

### Wales - Companies with Critical problems 2012/2013

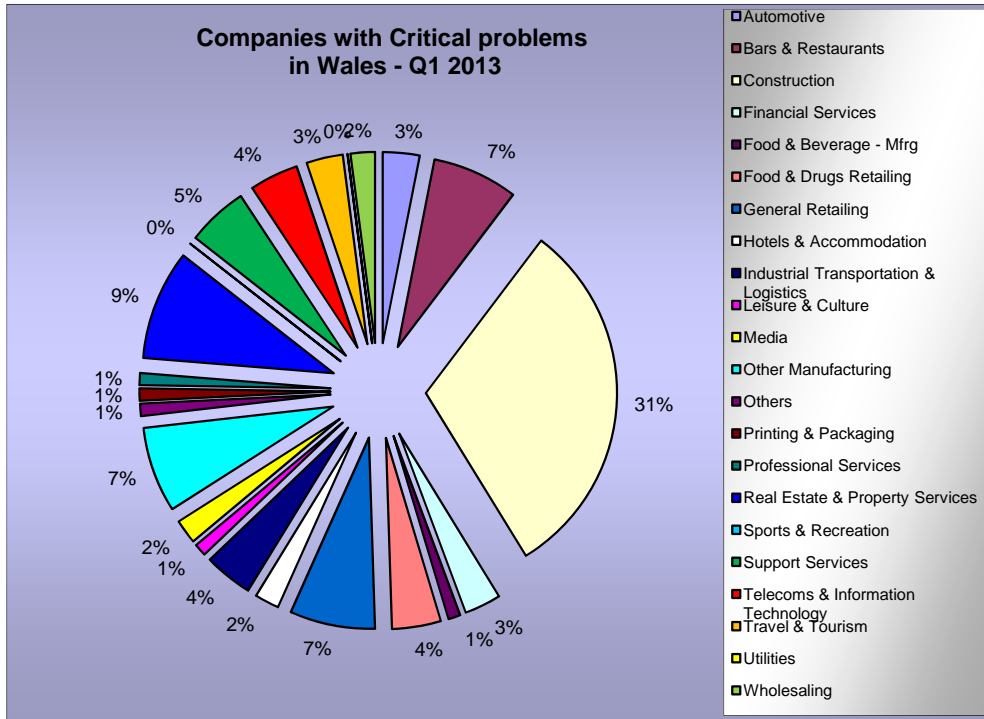
	Q1	Q2	Q3	Q4	Monthly Average	+/- %
2012	181	152	163	93	49	
2013	124	116			40	-18.5%



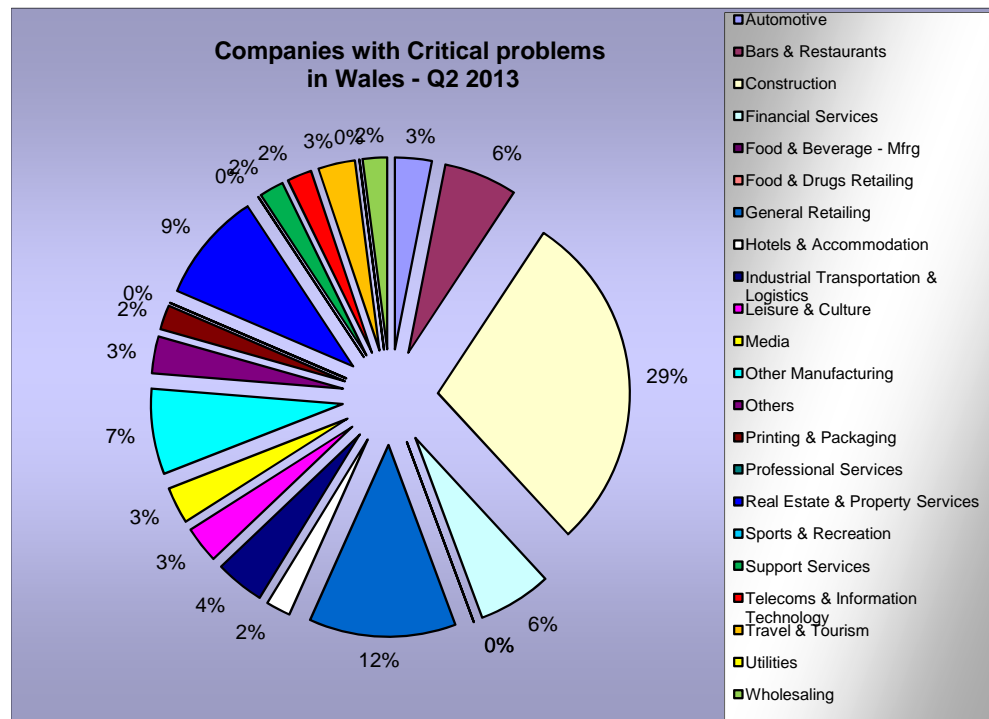
The information contained in this page is for your sole use and may not be passed on to any third party by you without the prior consent of Red Flag Alert LLP who assume no responsibility for the accuracy and correctness of such information and any opinions contained therein or for any consequences of you relying on it for any particular purposes.

**Note:** Industry Sectors - Companies are categorised by SIC classification per their details filed with Companies House.

**Wales**  
**- by Industry Sector - Companies with Critical problems - 1st Quarter 2013**



**Wales**  
**- by Industry Sector - Companies with Critical problems - 2nd Quarter 2013**



The information contained in this page is for your sole use and may not be passed on to any third party by you without the prior consent of Red Flag Alert LLP who assume no responsibility for the accuracy and correctness of such information and any opinions contained therein or for any consequences of you relying on it for any particular purposes.

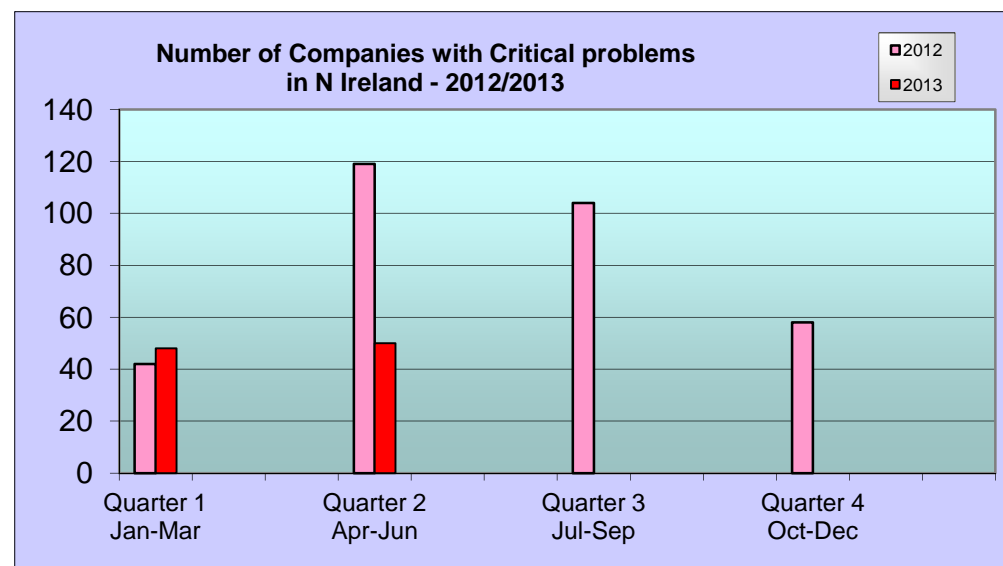


**Note:** The same company may have received more than one action during the period.

Code	Description
Critical problems	These are companies with CCJs totalling £5,000 or more and/or Winding-Up Petition or in a Voluntary Arrangement.

Northern Ireland - Critical Problems 2012	
Quarter	No. of Companies
Quarter 1 Jan-Mar	42
Quarter 2 Apr-Jun	119
Quarter 3 Jul-Sep	104
Quarter 4 Oct-Dec	58

Northern Ireland - Critical Problems 2013	
Quarter	No. of Companies
Quarter 1 Jan-Mar	48
Quarter 2 Apr-Jun	50
Quarter 3 Jul-Sep	
Quarter 4 Oct-Dec	



The information contained in this page is for your sole use and may not be passed on to any third party by you without the prior consent of Red Flag Alert LLP who assume no responsibility for the accuracy and correctness of such information and any opinions contained therein or for any consequences of you relying on it for any particular purposes.

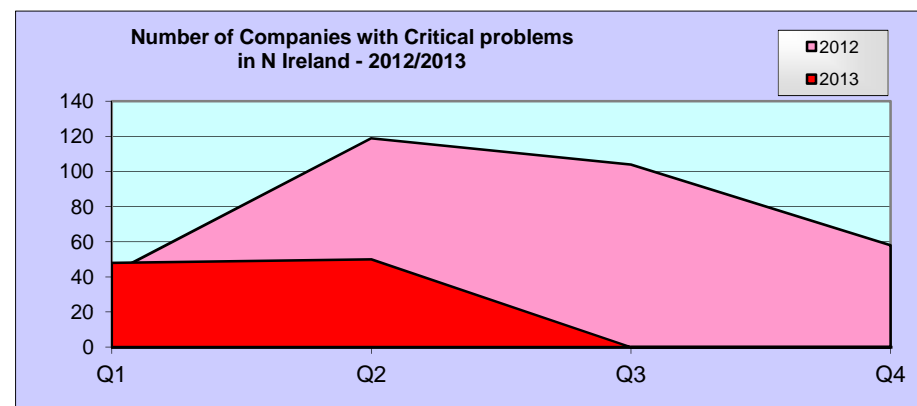


**Note:** The same company may have received more than one action during the period.

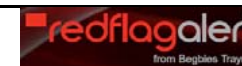
Code	Description
Critical problems	These are companies with CCJs totalling £5,000 or more and/or Winding-Up Petition or in a Voluntary Arrangement.

**Northern Ireland - Companies with Critical problems 2012/2013**

	Q1	Q2	Q3	Q4	Monthly Average	+/- %
2012	42	119	104	58	27	
2013	48	50			16	-39.3%



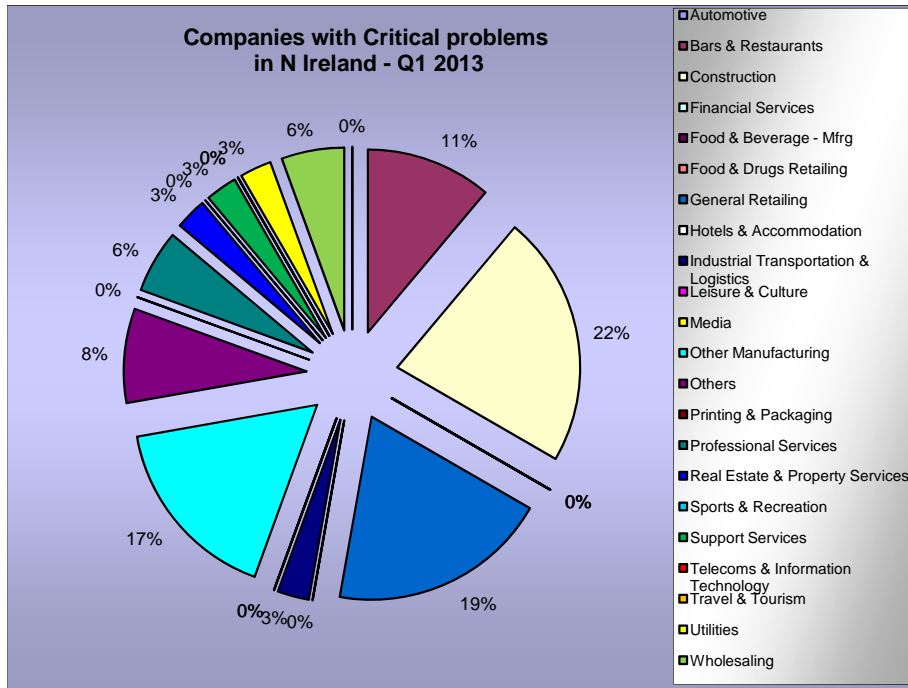
The information contained in this page is for your sole use and may not be passed on to any third party by you without the prior consent of Red Flag Alert LLP who assume no responsibility for the accuracy and correctness of such information and any opinions contained therein or for any consequences of you relying on it for any particular purposes.



**Note:** Industry Sectors - Companies are categorised by SIC classification per their details filed with Companies House.

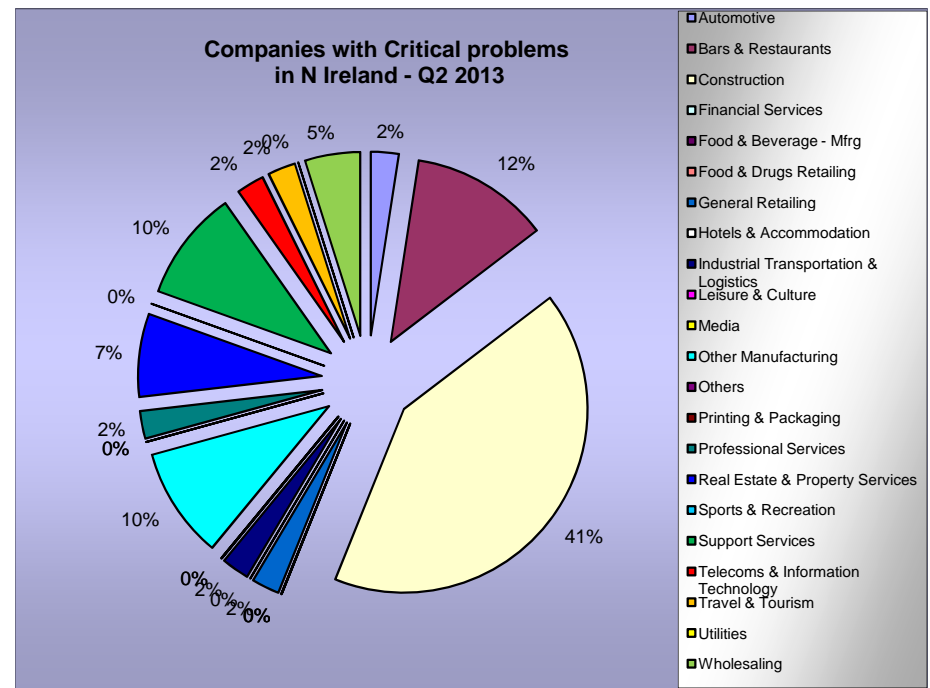
**Northern Ireland**

**- by Industry Sector - Companies with Critical problems - 1st Quarter 2013**



**Northern Ireland**

**- by Industry Sector - Companies with Critical problems - 2nd Quarter 2013**



The information contained in this page is for your sole use and may not be passed on to any third party by you without the prior consent of Red Flag Alert LLP who assume no responsibility for the accuracy and correctness of such information and any opinions contained therein or for any consequences of you relying on it for any particular purposes.



Red Flag Reporting Sector	SIC Code and Description
<p align="center"><b>Automotive</b></p>	<p>3410 - Manufacture of motor vehicles.            3420 - Manufacture of bodies for motor vehicles; manufacture of trailers and semi-trailers.            3430 - Manufacture of parts and accessories for motor vehicles and their engines.            3541 - Manufacture of motorcycles.            3543 - Manufacture of invalid carriages.            3550 - Manufacture of other transport equipment not elsewhere classified.            2320 - Manufacture of refined petroleum products.            2511 - Manufacture of rubber tyres and tubes.            2512 - Retreading and rebuilding of rubber tyres.            3161 - Manufacture of electrical equipment for engines and vehicles not elsewhere classified.</p>
	<p>5010 - Sale of motor vehicles.            5020 - Maintenance and repair of motor vehicles.            5030 - Sale of motor vehicle parts and accessories.            5040 - Sale, maintenance and repair of motorcycles and related parts and accessories.            5050 - Retail sale of automotive fuel.            7110 - Renting of automobiles.</p>
<p align="center"><b>Building - Construction</b></p>	<p>4511 - Demolition and wrecking of buildings; earth moving.            4512 - Test drilling and boring.            4521 - General construction of buildings and civil engineering works.            4522 - Erection of roof covering and frames.            4525 - Other construction work involving special trades.            4531 - Installation of electrical wiring and fittings.            4532 - Insulation work activities.            4533 - Plumbing.            4534 - Other building installation.            4541 - Plastering.            4542 - Joinery installation.            4543 - Floor or wall covering.            4544 - Painting and glazing.            4545 - Other building completion.            4550 - Renting of construction or demolition equipment with operator.            7132 - Renting of construction and civil engineering machinery and equipment.</p>
	<p>4523 - Construction of motorways, roads, railways, airfields and sports facilities.            4524 - Construction of water projects.</p>

Red Flag Reporting Sector	SIC Code and Description
<b>Building - Materials</b>	2010 - Saw milling and planing of wood 2020 - Manufacture of veneer sheets; manufacture of plywood, laminboard, particle board and other panels and boards 2030 - Manufacture of builders' carpentry and joinery 2051 - Manufacture of other products of wood 2523 - Manufacture of builders' ware of plastic 2611 - Manufacture of flat glass 2612 - Shaping and processing of flat glass 2622 - Manufacture of ceramic sanitary fixtures 2623 - Manufacture of ceramic insulators and insulating fittings 2624 - Manufacture of other technical ceramic products 2630 - Manufacture of ceramic tiles and flags 2640 - Manufacture of bricks, tiles and construction products, in baked clay 2651 - Manufacture of cement 2652 - Manufacture of lime 2653 - Manufacture of plaster 2661 - Manufacture of concrete products for construction purposes 2662 - Manufacture of plaster products for construction purposes 2663 - Manufacture of ready-mixed concrete 2664 - Manufacture of mortars 2665 - Manufacture of fibre cement 2666 - Manufacture of other articles of concrete, plaster and cement 2670 - Cutting, shaping and finishing or ornamental and building stone 2812 - Manufacture of builders' carpentry and joinery of metal 2822 - Manufacture of central heating radiators and boilers 5113 - Agents involved in the sale of timber and building materials 5153 - Wholesale of wood, construction materials and sanitary equipment 5154 - Wholesale of hardware, plumbing and heating equipment and supplies



Red Flag Reporting Sector	SIC Code and Description
<p align="center"><b>Food &amp; Beverages Manufacturing</b></p>	<p>1511 - Production and preserving of meat            1512 - Production and preserving of poultry meat            1513 - Production of meat and poultry meat products            1520 - Processing and preserving of fish and fish products            1531 - Processing and preserving of potatoes            1532 - Manufacture of fruit and vegetable juice            1533 - Processing and preserving of fruit and vegetables not elsewhere classified            1542 - Manufacture of refined oils and fats            1543 - Manufacture of margarine and similar edible fats            1551 - Operation of dairies and cheese making            1552 - Manufacture of ice cream            1561 - Manufacture of grain mill products            1562 - Manufacture of starch and starch products            1571 - Manufacture of prepared feed for farm animals            1572 - Manufacture of prepared pet foods            1581 - Manufacture of bread; manufacture of fresh pastry goods and cakes            1582 - Manufacture of rusks and biscuits; manufacture of preserved pastry goods and cakes            1583 - Manufacture of sugar            1584 - Manufacture of cocoa, chocolate and sugar confectionery            1585 - Manufacture of macaroni, noodles, couscous and similar farinaceous products            1586 - Processing of tea and coffee            1587 - Manufacture of condiments and seasonings            1588 - Manufacture of homogenised food preparations and dietetic food            1589 - Manufacture of other food products not elsewhere classified            1591 - Manufacture of distilled potable alcoholic beverages            1592 - Production of ethyl alcohol from fermented materials            1593 - Manufacture of wines            1594 - Manufacture of cider and other fruit wines            1595 - Manufacture of other non-distilled fermented beverages            1596 - Manufacture of beer            1597 - Manufacture of malt            1598 - Manufacture of mineral waters and soft drinks</p>
<p align="center"><b>Printing &amp; Packaging</b></p>	<p>2121 - Manufacture of corrugated paper and paperboard and of containers of paper and paperboard            2125 - Manufacture of other articles of paper and paperboard not elsewhere classified            7482 - Packaging activities            2221 - Printing of newspapers            2222 - Printing not elsewhere classified            2223 - Bookbinding            2224 - Pre-press activities            2225 - Ancillary activities related to printing</p>

Red Flag Reporting Sector	SIC Code and Description
<b>Other Manufacturing</b>	<p>1710 - Preparation and spinning of textile fibres            1720 - Textile weaving            1730 - Finishing of textiles            1740 - Manufacture of made-up textile articles, except apparel            1750 - Manufacture of other textiles            1760 - Manufacture of knitted and crocheted fabrics            1770 - Manufacture of knitted and crocheted articles            1810 - Manufacture of leather clothes            1820 - Manufacture of other wearing apparel and accessories            1830 - Dressing and dyeing of fur; manufacture of articles of fur            2470 - Manufacture of man-made fibres</p> <hr/> <p>2410 - Manufacture of basic chemicals            2420 - Manufacture of pesticides and other agro-chemical products            2430 - Manufacture of paints, varnishes and similar coatings, printing ink and mastics            2440 - Manufacture of pharmaceuticals, medicinal chemicals and botanical products            2450 - Manufacture of soap and detergents, cleaning and polishing preparations, perfumes and toilet preparations            2460 - Manufacture of other chemical products</p> <hr/> <p>Other items:- 1541, 1600, 1910, 1920, 1930, 2040, 2052, 2111, 2112, 2122, 2123, 2124, 2310, 2320, 2330, 2513, 2521, 2522, 2523, 2524, 2615, 2621, 2613, 2614, 2626, 2681, 2682, 2710, 2721, 2722, 2731, 2732, 2733, 2734, 2741, 2742, 2743, 2744, 2745, 2751, 2752, 2753, 2754, 2811, 2821, 2830, 2851, 2852, 2861, 2862, 2863, 2871, 2872, 2873, 2874, 2875, 2911, 2912, 2913, 2914, 2921, 2922, 2923, 2924, 2931, 2932, 2941, 2942, 2943, 2951, 2952, 2953, 2954, 2955, 2956, 2960, 2971, 2972, 3001, 3110, 3120, 3130, 3140, 3150, 3162, 3210, 3310, 3320, 3330, 3340, 3350, 3511, 3512, 3520, 3530, 3542, 3611, 3612, 3613, 3614, 3615, 3621, 3622, 3630, 3650, 3661, 3662, 3663, 3710, 3720</p>
<b>Financial Services</b>	<p>6511 - Central banking            6512 - Other monetary intermediation            6521 - Financial leasing            6522 - Other credit granting            6523 - Other financial intermediation not elsewhere classified            6601 - Life insurance            6602 - Pension funding            6603 - Non-life insurance            6711 - Administration of financial markets            6712 - Security broking and fund management            6713 - Activities auxiliary to financial intermediation not elsewhere classified            6720 - Activities auxiliary to insurance and pension funding</p>
<b>Real Estate &amp; Property Services</b>	<p>7011 - Development and selling of real estate            7012 - Buying and selling of own real estate            7020 - Letting of own property            7031 - Real estate agencies            7032 - Management of real estate on a fee or contract basis</p>

Red Flag Reporting Sector	SIC Code and Description
Professional Services	7411 - Legal activities 7412 - Accounting, book-keeping and auditing activities; tax consultancy 7414 - Business and management consultancy activities 7420 - Architectural and engineering activities and related technical consultancy
Support Services	7131 - Renting of agricultural machinery and equipment 7133 - Renting of office machinery and equipment including computers 7134 - Renting of other machinery and equipment not elsewhere classified 7250 - Maintenance and repair of office, accounting and computer machinery 7310 - Research and development on natural sciences and engineering 7320 - Research and development on social sciences and humanities 7415 - Management activities of holding companies 7430 - Technical testing and analysis 7450 - Labour recruitment and provision of personnel 7460 - Investigation and security activities 7470 - Industrial cleaning 7485 - Secretarial and translation activities 7487 - Other business activities not elsewhere classified 9305 - Other service activities not elsewhere classified
Media	7481 - Photographic activities 7413 - Market research and opinion polling 7440 - Advertising 9240 - News agency activities 2214 - Publishing of sound recordings 2231 - Reproduction of sound recordings 2232 - Reproduction of video recordings 9211 - Motion picture and video production 9212 - Motion picture and video distribution 9213 - Motion picture projection 9220 - Radio and television activities 2211 - Publishing of books 2212 - Publishing of newspapers 2213 - Publishing of journals and periodicals 2215 - Other publishing

Red Flag Reporting Sector	SIC Code and Description
<p><b>Leisure Hotels &amp; Accommodation</b></p>	<p>5510 - Hotels 5521 - Youth hostels and mountain refuges 5522 - Camping sites, including caravan sites 5523 - Other provision of lodgings not elsewhere classified</p>
<p><b>Leisure Bars &amp; Restaurants</b></p>	<p>5530 - Restaurants 5540 - Bars 5551 - Canteens 5552 - Catering</p>
<p><b>Leisure Sports &amp; Health Clubs</b></p>	<p>9261 - Operation of sports arena and stadiums 9262 - Other sporting activities 9272 - Other recreational activities not elsewhere classified 9304 - Physical well-being activities</p>
<p><b>Leisure Cultural Activities</b></p>	<p>9231 - Artistic and literary creation and interpretation 9232 - Operation of arts facilities 9233 - Fair and amusement park activities 9234 - Other entertainment activities not elsewhere classified 9251 - Library and archive activities 9252 - Museum activities and preservation of historical sites and buildings 9253 - Botanical and zoological gardens and nature reserve activities 9271 - Gambling and betting activities</p>
<p><b>Travel &amp; Tourism</b></p>	<p>6210 - Scheduled air transport 6220 - Non-scheduled air transport 6323 - Other supporting air transport activities 6330 - Activities of travel agents and tour operators; tourist activities not elsewhere classified</p> <p>6010 - Transport via railways 6021 - Other scheduled passenger land transport 6022 - Taxi operation 6023 - Other passenger land transport 6321 - Other supporting land transport activities</p>
<p><b>Food &amp; Drug Retailers</b></p>	<p>5211 - Retail sale in non-specialised stores with food, beverages or tobacco predominating 5221 - Retail sale of fruit and vegetables 5222 - Retail sale of meat and meat products 5223 - Retail sale of fish, crustaceans and molluscs 5224 - Retail sale of bread, cakes, flour confectionery and sugar confectionery 5225 - Retail sale of alcoholic and other beverages 5226 - Retail sale of tobacco products 5227 - Other retail sale of food, beverages and tobacco in specialised stores 5231 - Dispensing chemists 5232 - Retail sale of medical and orthopaedic goods 5233 - Retail sale of cosmetic and toilet articles</p>

Red Flag Reporting Sector	SIC Code and Description
<p><b>General Retailers</b></p>	<p>5212 - Other retail sale in non-specialised stores                      5241 - Retail sale of textiles                      5242 - Retail sale of clothing                      5243 - Retail sale of footwear and leather goods                      5244 - Retail sale of furniture, lighting equipment and household articles not elsewhere classified                      5245 - Retail sale of electrical household appliances and radio and television goods                      5246 - Retail sale of hardware, paints and glass                      5247 - Retail sale of books, newspapers and stationery                      5248 - Other retail sale in specialised stores                      5250 - Retail sale of second-hand goods in stores                      5261 - Retail sale via mail order house                      5262 - Retail sale via stalls and markets                      5263 - Other non-store retail sale                      5271 - Repair of boots, shoes and other articles of leather                      5272 - Repair of electrical household goods                      5273 - Repair of watches, clocks and jewellery                      5274 - Repair not elsewhere classified                      9301 - Washing and dry cleaning of textile and fur products                      9302 - Hairdressing and other beauty treatment</p>
<p><b>Industrial Transportation &amp; Logistics</b></p>	<p>6024 - Freight transport by road                      6311 - Cargo handling                      6312 - Storage and warehousing                      6340 - Activities of other transport agencies</p>
<p><b>Telecommunications &amp; Information Technology</b></p>	<p>6420 - Telecommunications</p> <p>3002 - Manufacture of computers and other information processing equipment                      5184 - Wholesale of computers, computer peripherals and software                      7210 - Hardware consulting                      7221 - Publishing of software                      7222 - Other software consultancy and supply                      7230 - Data processing                      7240 - Database activities                      7250 - Maintenance and repair of office, accounting and computer machinery                      7260 - Other computer related activities</p>
<p><b>Utilities</b></p>	<p>4011 - Production of electricity                      4012 - Transmission of electricity                      4013 - Distribution and trade in electricity                      4021 - Manufacture of gas                      4022 - Distribution and trade of gaseous fuels through mains                      4030 - Steam and hot water supply                      4100 - Collection, purification and distribution of water                      9001 - Collection and treatment of sewage                      9002 - Collection and treatment of other waste                      9003 - Sanitation, remediation and other activities</p>

Region	All postcodes relating to the counties and islands listed below
Scotland	Aberdeenshire, Angus, Argyll, Ayrshire, Banffshire, Berwickshire, Caithness, Clackmannanshire, Dumfriesshire, Dunbartonshire, West Lothian, Fife, Invernesshire, Isle of Arran, Isle of Barra, Isle of Benbecula, Isle of Bute, Isle of Canna, Isle of Colonsay, Isle of Cumbrae, Isle of Eigg, Isle of Gigha, Isle of Harris, Isle of Islay, Isle of Jura, Isle of Lewis, Isle of Mull, Isle of North Uist, Isle of Rum, Isle of Scalpay, Isle of Skye, Isle of South Uist, Kincardineshire, Kinrosshire, Kirkcubrightshire, Lanarkshire, Midlothian, Morayshire, Nairnshire, Orkney, Peebleshire, Perthshire, Renfrewshire, Rossshire, Roxburghshire, Selkirkshire, Shetland Islands, Stirlingshire, Sutherland, West Lothian, Wigtownshire.
North East	Northumberland, Tyne & Wear, Durham, Cleveland.
North West	Cumbria, Lancashire, Greater Manchester, Merseyside, Isle of Man, Cheshire.
Yorkshire & Humberside	North Yorkshire, West Yorkshire, South Yorkshire, North Humberside, South Humberside.
Midlands	Derbyshire, Nottinghamshire, Northamptonshire, Leicestershire, Staffordshire, Shropshire, West Midlands, Warwickshire, Hereford & Worcester.
East of England	Lincolnshire, Cambridgeshire, Norfolk, Suffolk.
South East	Oxfordshire, Buckinghamshire, Bedfordshire, Hertfordshire, Essex, Berkshire, Surrey, Kent, East Sussex, West Sussex.
London	Greater London, Middlesex.
South West	Gloucestershire, Avon, Wiltshire, Hampshire, Dorset, Isle of Wight, Somerset, Devon, Cornwall, Isles of Scilly, Channel Islands.
Wales	Clwyd, Gwynedd, West Glamorgan, Mid Glamorgan, South Glamorgan, Gwent, Dyfed, Powys.
Northern Ireland	Derry, Tyrone, Fermanagh, Antrim, Armagh, Down